

About SSE Renewables

SSE Renewables is a leading developer and operator of renewable energy generation, focusing on onshore and offshore wind, hydro, solar and battery storage.

Part of energy infrastructure company SSE plc, we are delivering clean power assets to increase our operational renewable generation capacity from 5GW today to up to 9GW by 2027 as part of a €24bn clean energy plan, our five-year Net Zero Acceleration Programme (NZAP) Plus.

SSE Renewables operates some of the largest onshore wind farms on the island of Ireland including the 174MW Galway Wind Park in Connemara and the 73MW Slieve Kirk Wind Park outside Derry City.

In addition to Coomatallin Wind Farm, SSE Renewables operates two other wind farms in Cork, Coomacheo Wind Farm and Curragh Wind Farm, both located between Ballvourney and Millstreet. Together, these three wind farms comprise nearly 66MW of green, home-grown electricity, boosting Ireland's energy security and supporting national climate goals.



Contact Us

We are keen to keep in contact with all members of the community and will keep you informed as the project progresses.

We circulated a letter to near neighbours living within 2km of Coomatallin Wind Farm in January and are now circulating this additional newsletter to households, in addition to following up with other local stakeholders.

In the meantime, if you have any queries please contact our External Relations Manager, Conor Joy, via email, telephone or post.

Conor Joy,
External Relations Manager,
SSE Renewables

Email: clo@sse.com

Mobile: 087 057 3409

Post:

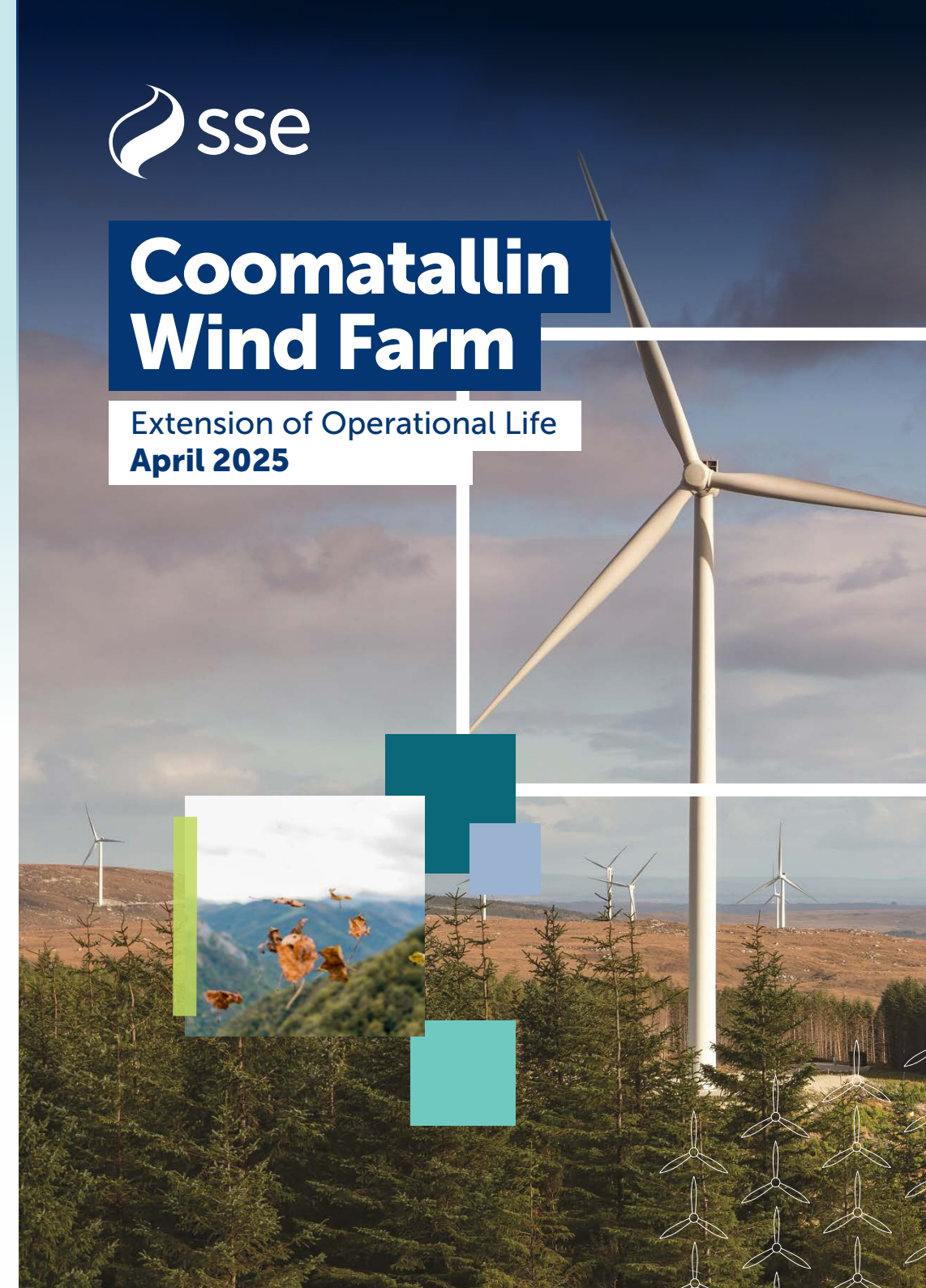
SSE Renewables
Red Oak South
South County Business Park
Leopardstown Dublin 18
D18 W688

Information is also available on
<https://www.sserenewables.com/onshore-wind/ireland/coomatallin/>



Coomatallin Wind Farm

Extension of Operational Life
April 2025



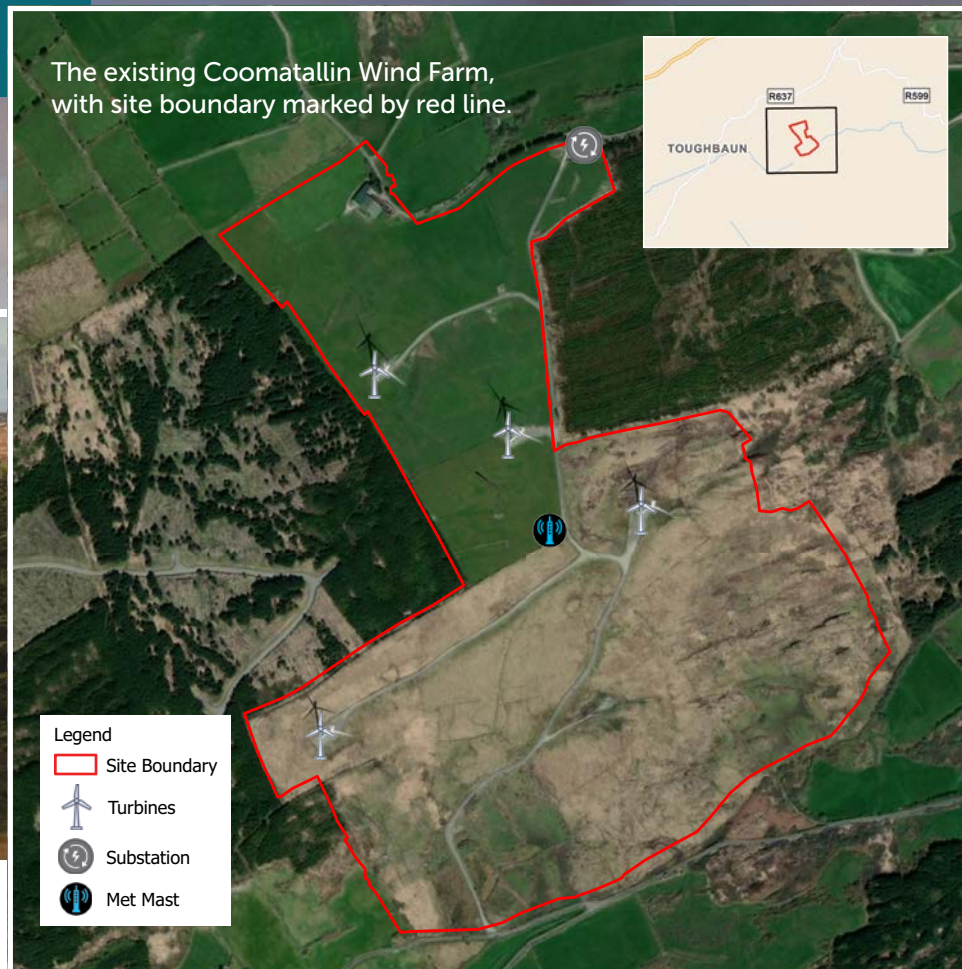


Proposed Extension of Operational Life

For nearly 20 years, the green energy produced by Coomatallin Wind Farm has been powering Irish homes and businesses, abating harmful carbon dioxide emissions and has played a key role in helping Ireland meet its renewable energy targets.

Coomatallin was granted planning permission in 2001 and was commissioned in 2006. The planning permission for the wind farm limits its operational life to 20 years from the date of commissioning. As modern turbines and associated wind farm infrastructure are capable of operating for a period well in excess of 30-years, we are now seeking to extend the operational lifetime of Coomatallin by a further 20 years up to 2046.

Our lifetime extension planning application, to be submitted later this year to Cork County Council, will not include any significant amendments to the existing development. An extension of life will also ensure the continuation of community funding, and that Cork County Council continues to receive rates payments linked to the wind farm, which contribute towards the provision of local services and infrastructure.



BENEFITS OF COOMATALLIN WIND FARM



Powering **Irish homes and businesses** with clean, green energy.



The 6MW wind farm comprises of **4 turbines** and was commissioned in 2006.



SSE Renewables Community Fund has distributed over **€252,000** locally since 2006.



Helping Ireland reach its **renewable energy targets**, combatting climate change.



Rates payments to Cork County Council from Coomatallin Wind Farm contribute towards services such as roads, local infrastructure and public services.

Recipients from the Coomatallin Wind Farm Community Fund receiving their funding during a presentation held in Drinagh in 2023.



SSE Renewables Community Fund

SSE Renewables has paid almost €2m in funding to community groups in Cork.

Through our community funds programme, we make annual contributions to community groups in the vicinity of our wind farms. Since 2006, SSE Renewables has paid almost €2m in funding to community groups in Cork.

In 2024/2025 the Coomatallin Fund awarded nearly €16,000 to community groups within 20km of the wind farm, bringing the total the fund has distributed locally since 2006 to over €252,000.