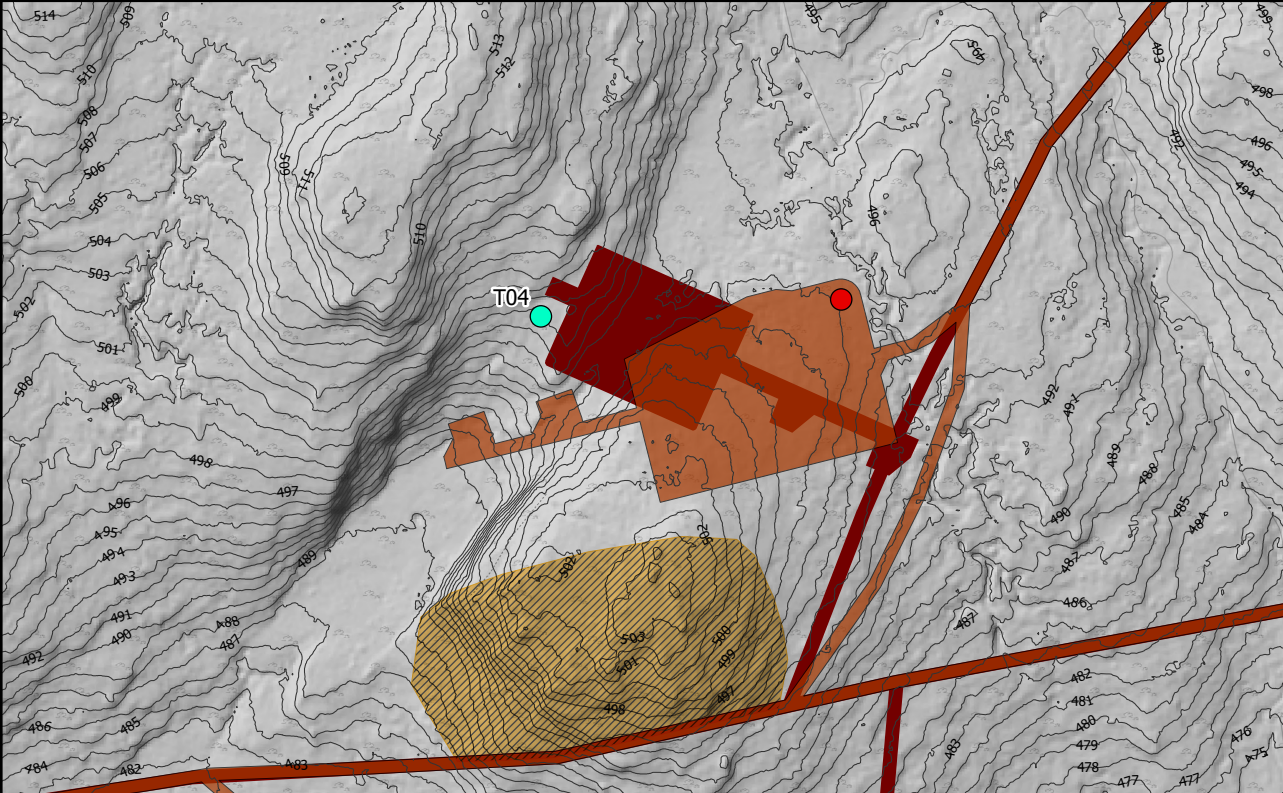
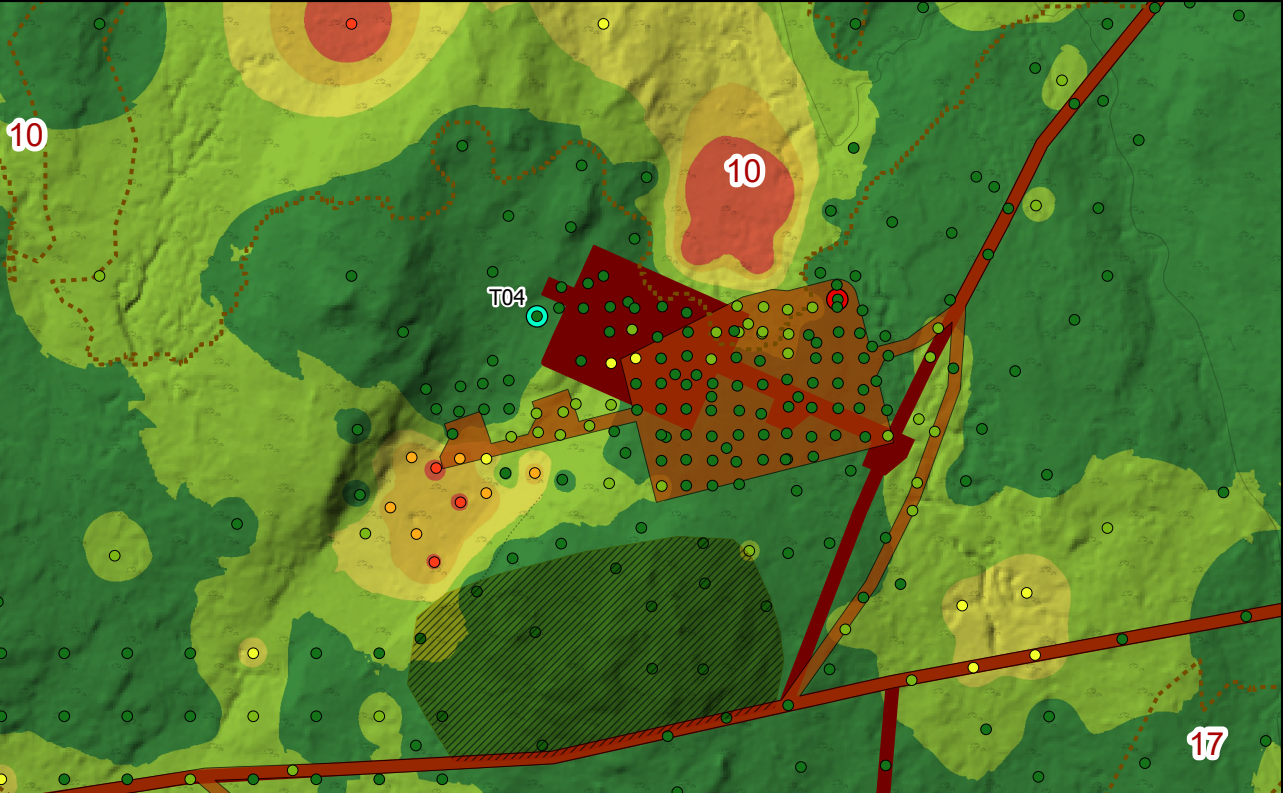


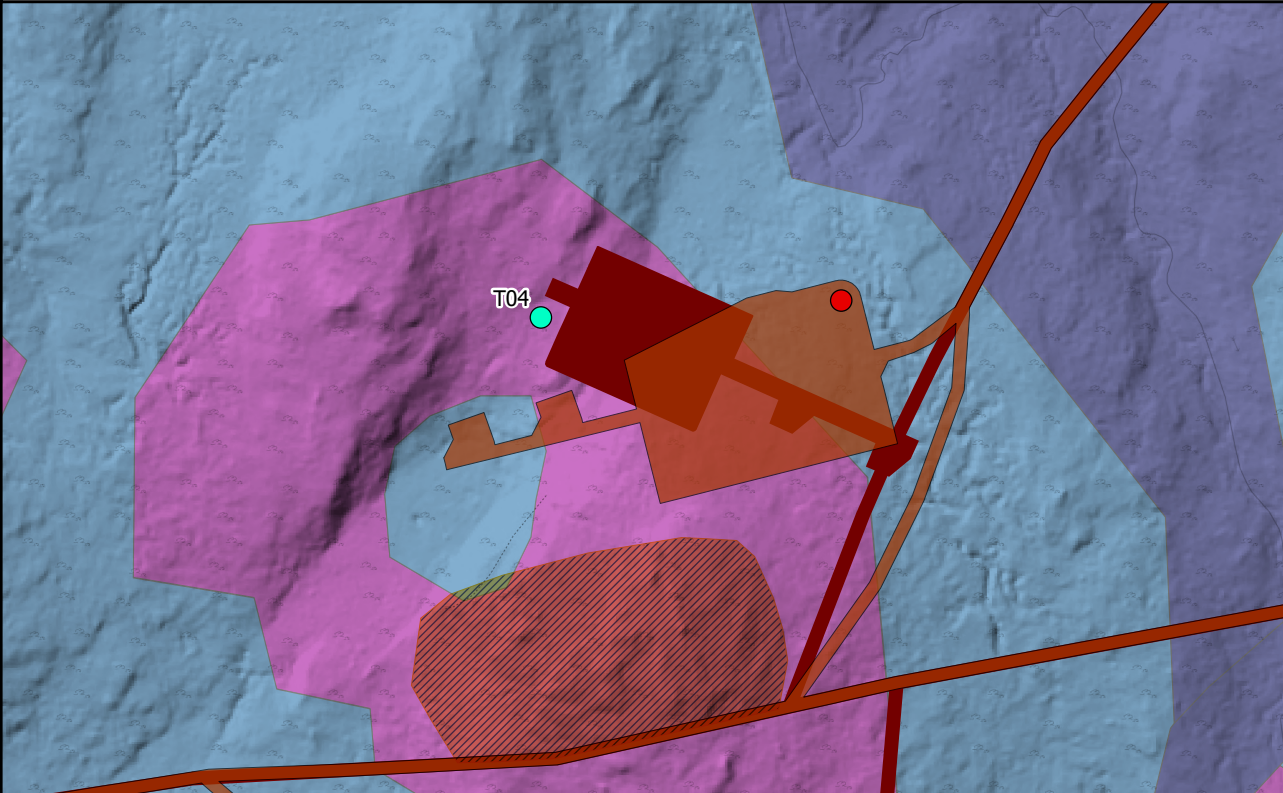
T04: Reason for Moving: This move is necessary to ensure a suitable topple distance between the turbine and the substation platform. Given the turbine's central location within the windfarm layout, the direction of potential movement was limited to avoid negatively impacting other turbines.



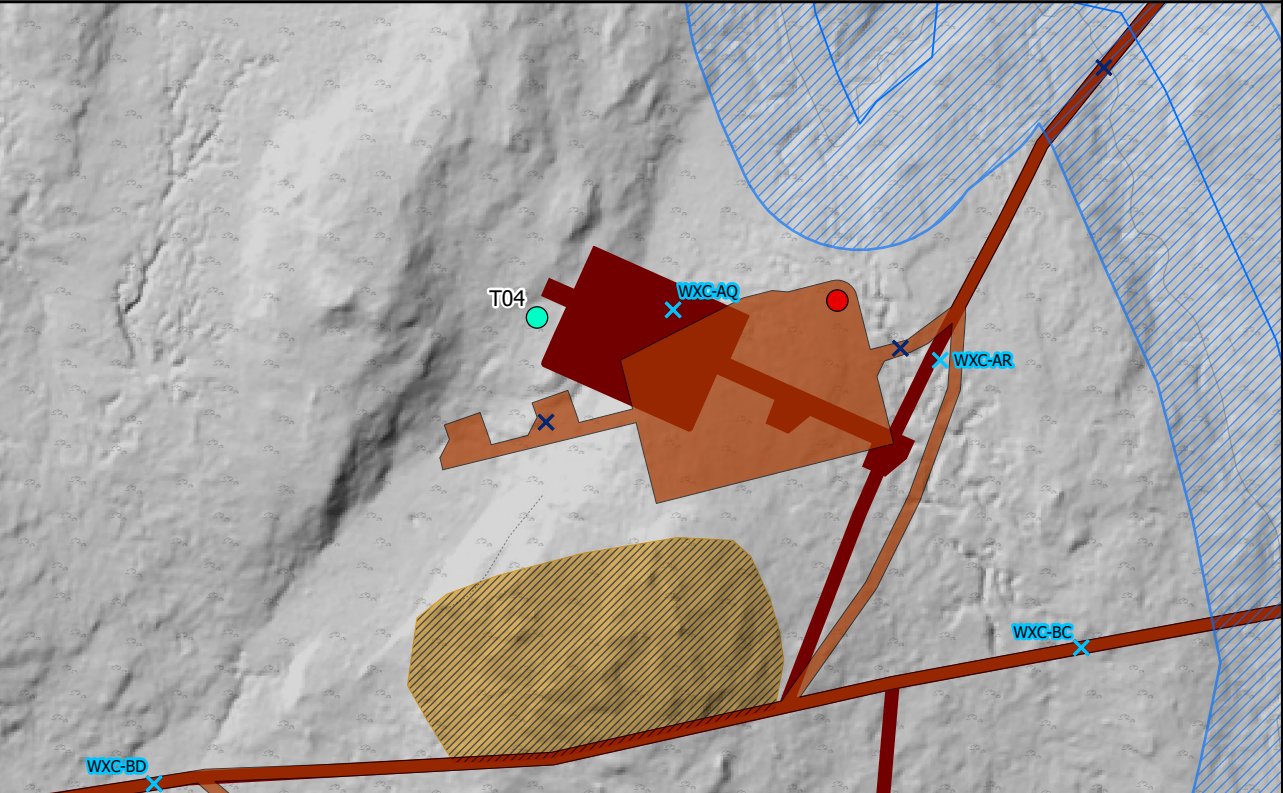
Engineering: The rotation of the hardstand to allow for access from the North-East provides a greater run distance from the Spine Road and thus reducing the gradient of the Spur Road to acceptable levels. The new arrangement also avoids overlap between the temporary crane pads and the access track.



Geology Impacts: The consented location could not accommodate the larger hardstands required for the proposed turbine technology. The selected location necessitates a reverse manoeuvre to deliver components to the hardstand, with delivery vehicles using the unloaded turning head at T05 to exit the site. The proposed infrastructure is almost entirely within the current consented 50m micrositing buffer for tracks and hardstands, with peat depths similar to those of the consented layout.



Ecology Impacts: The consented hardstand is too small for the installation of the turbines being considered for the project. Increasing the hardstand would introduce areas of vegetation from the consented Wet Heath (M15c) and Blanket Mire (M17b, M17/M17a/M18a/M19a). The new proposed location has a similar effect, impacting the same habitat types.



Hydrology Impacts: The proposed location is outside the 50m water buffers. Similar to the current consented location, a watercourse crossing is required on the track at the entrance to the hardstand.

Legend

- Site Boundary
- Consented Turbine Location
- Proposed Varied Turbine Location
- Proposed Varied Development Layout
- Consented Development Layout
- No Change to Consented Development
- Consented Borrow Pit Excluded From Proposed Varied Development

Engineering

1m Contour

Geology

Peat Depth (m)

- 0 - 0.5
- 0.5 - 1
- 1 - 1.5
- 1.5 - 2
- > 2
- 0 - 0.5
- 0.5 - 1
- 1 - 1.5
- 1.5 - 2
- > 2
- Potential Peatland Restoration Areas

Ecology

NVC

- H9e
- M15c
- M17/M17a/M18a/M19a

Hydrology

- Consented Water Crossing
- Revised Water Crossings
- Watercourses (Based on OS 50k)
- Waterbodies (Based on OS 50k)
- 50m Water Buffer (Based on OS 50k)

Scale 1:3,000 @ A3

0 80 m



Figure 2.1d
Infrastructure Design Review
- Turbine 04