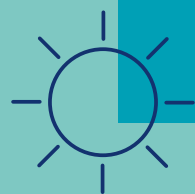


Yellow River Wind Farm

Winter 2025 Newsletter





About Yellow River Wind Farm

Yellow River Wind Farm, located outside Rhode Co. Offaly, is a 101MW wind farm comprising 29 turbines which has now officially entered full commercial operation, making it Ireland's newest onshore wind farm.

The project received planning permission in 2014 and in October 2022 SSE Renewables commenced the construction process of the wind farm, which was completed in December 2025. The wind farm will produce enough clean green energy to power the equivalent of around 75,000 homes annually.

Construction and commissioning are now complete, and the wind farm is fully operational.

Thanking the Community

A note of introduction from Ciaran Maguire as General Manager of the Operations team:

"Now that construction of Yellow River has been completed, and our turbines have started spinning, the entire team in SSE Renewables would like to extend our thanks to all members of the local community for their patience over the last 2 plus years.

I'm delighted to see one of Ireland's newest wind farms in operation, and my own team looks forward to maintaining good relationships with the community in Rhode. We hope that the wind farm leaves a lasting positive impact locally.

Our team will continue to work with community to address any queries or issues that may arise, on anything from shadow flicker, to noise to general operations. Our relationships with the people in Rhode and the wider region are very valuable and ones we don't take for granted now that we're in the operational phase. Don't hesitate to reach out at any time at our email clo@sse.com"

Ciaran Maguire, Onshore Wind O&M General Manager Ireland for SSE Renewables



About SSE Renewables

SSE Renewables is a leading developer and operator of renewable energy generation, focusing on onshore and offshore wind farms, hydro-electric power and flexible battery storage technologies. It is part of electricity infrastructure company SSE plc, a FTSE-100 company with operations across the UK and Ireland, and a presence in carefully selected international markets. SSE Renewables delivers clean power assets to increase SSE's operational renewable generation capacity as part of the company's five-year investment plan for 2030. This includes delivery of the world's largest offshore wind farm in construction, the 3.6GW Dogger Bank Wind Farm. SSE Renewables operates some of the leading onshore wind farms in Ireland including the 174MW Galway Wind Park in Connemara and the 73MW Slieve Kirk Wind Park outside Derry City.

Benefits of the Project



101MW of clean green energy.



150 jobs created at peak of construction period.



Powering the equivalent of 75,000 homes.



82 projects supported with our Construction Fund.



Offsetting the equivalent of 70,000 metric tonnes of harmful CO2 emissions.



Community Benefit Fund



Investment in the local economy and community.



Contributing to Ireland's Climate Action Target of 80% renewable electricity by 2030.

Project updates

Following the successful completion of construction and commissioning earlier this year, all 29 turbines are now generating clean, renewable energy and exporting up to 101 MW of power to the national grid. This is enough to supply thousands of Irish homes and businesses with sustainable electricity.

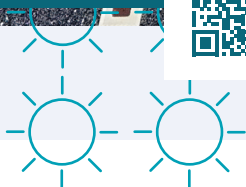
Since entering full operation, the project team has focused on completing final commissioning activities as part of handing the site over to the operations team. This has included supporting ongoing grid upgrade works in the area. These upgrades, carried out in coordination with EirGrid, help strengthen Ireland's transmission network and ensure that renewable power from projects like Yellow River continues to be delivered efficiently across the country. The completion of the Yellow River Wind Farm marks an important milestone in SSE Renewables' contribution to Ireland's clean energy targets and reflects our continued commitment to delivering reliable, low-carbon electricity to communities nationwide.

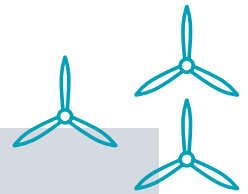
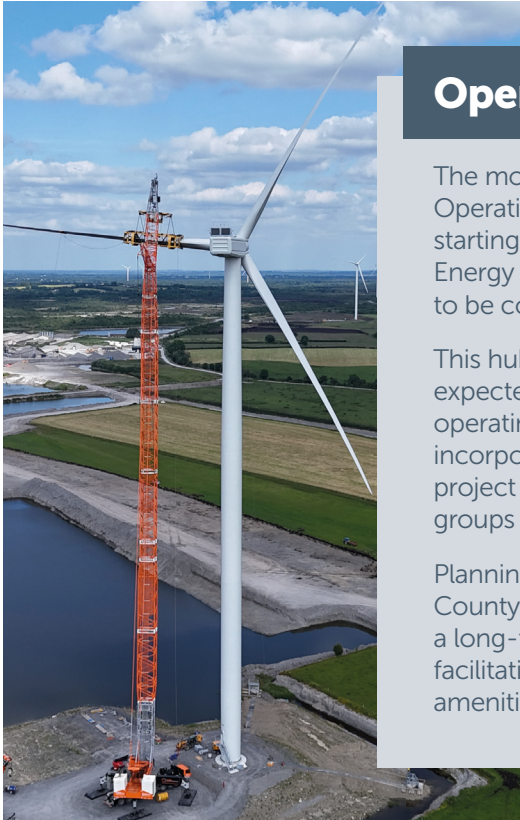


You can read more about the project's journey, including our milestone of first power achieved in December 2024, on our Yellow River webpage or by scanning the QR code:



Substation Construction Works





Operations & Maintenance Base

The move to the operational phase also brings the need for a permanent Operations and Maintenance (O&M) base. SSE Renewables will be starting construction of a new operations building in Rhode Green Energy Park alongside the Yellow River Wind Farm substation, expected to be completed by Autumn 2026.

This hub will be used to direct all operations of the site, where it is expected that 4 to 6 skilled technicians will be based and involved in operating, maintaining and servicing the turbines. The building will incorporate a meeting room facility which can be used for collaborative project meetings and for hosting visitor delegations and academic groups to the park.

Planning permission for the proposed building was granted by Offaly County Council in September, marking an important step in establishing a long-term operational presence for the Yellow River Wind Farm, facilitating the smooth running of the wind farm and other community amenities such as education.

Construction Fund

Following the completion of the construction of the wind farm and the allocated funds, our Construction Fund is now closed. We are extremely proud to have supported 82 fantastic local community projects and initiatives via our Construction Fund since its launch.

We have been able to support a wide range of projects which benefit members of the community, both young and old. The fund supported sports clubs, arts and cultural projects, community projects and all local schools throughout various grant rounds. Over the past year, the team is proud to have supported a number of projects, including sponsoring transport for the local Rhode Castlejordan Active Retirement's annual outing, sponsoring the local Santa event including Christmas lights in Rhode and Croghan, supporting the annual Rhode St Patrick's Day parade and the Edenderry Music Festival, whilst providing a grant to a local drama summer camp for children, among a number of other grants some of which are highlighted below.

Examples of causes, groups and clubs supported include:

- Rhode Community Youth Club
- Rhode Community Centre
- Rhode Children's Creche
- Community Games in Rhode
- Rhode Tidy Towns
- Rhode STEAM Project
- Rhode Athletic Club's "Couch to 5km"
- Rhode Children's Playground
- Primary schools in the vicinity of the wind farm
- GAA clubs in Rhode, Croghan, Ballinabrackey & Clonmore
- Castlejordan Community Centre
- Castlejordan Children's Creche

A Spotlight on Local Heritage

Archaeological Discovery at Yellow River

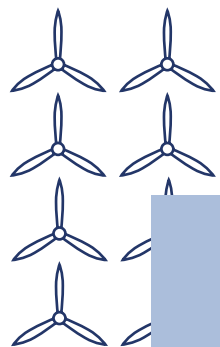
As part of the Yellow River Wind Farm construction, Horizon Archaeology carried out extensive monitoring and excavation from late 2022. Earlier this year, archaeologist Fiona Maguire shared the results with the Rhode–Croghan Local Historical Society, outlining how the work was undertaken and highlighting some of the discoveries made on site.

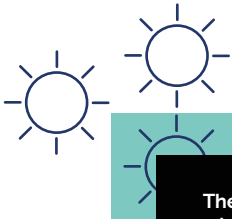
Radiocarbon dating of samples shows human activity in the area from at least the Bronze Age through to the 20th century, with most features dating between the 9th and 16th centuries.

Evidence of settlement, milling, eel fishing and metalworking was uncovered, along with artefacts such as stone tools, pottery, quern stones, glass fragments and medieval iron knives. These materials are now undergoing specialist analysis to help build a clearer picture of life along the Yellow River in the past. As the wind farm enters full operation, SSE Renewables remains committed to responsible site management and long-term environmental stewardship.



Rotary quern from the later medieval period (c.1200-1300 AD) found during the archaeological excavations on the Yellow River Wind Farm.





The Yellow River Wind Farm Fund Committee Wraps up 2024 with the launch of the Community Consultation Report.



Yellow River
Wind Farm
Community
Benefit Fund



Community Benefit Fund

Launch of the Fund Strategy

SSE Renewables launched the Yellow River Community Benefit Fund Strategy in December, setting out the Fund's priorities and how it will deliver long-term, positive impacts for the local area and neighbouring region.

The Strategy includes three strands: the Local Fund, the Major Project Fund and the Near Neighbour Fund, for those living within 1km of the wind farm.

The Local and Major Project Funds will open for applications from 12 January to 2 March 2026. In the meantime, the SSE team will be in touch with households who may be eligible for Near Neighbour payments to share details of the application process.

If you haven't already signed up for our Community Benefit Fund updates, scan the QR code above and provide your details, or follow this link, **Register of Interest:** <https://ssecommunity.my.site.com/s/register-of-interest> to ensure you hear about our information event for community groups.

**For further information about
SSE Renewables, please contact:**

SSE Renewables

Registered Office:
South County Business Park
Red Oak South
Leopardstown
Dublin 18
D18 W688
SSE plc
Registered in Ireland No.314061

saserenewables.com

Follow us on LinkedIn for latest news from SSE Renewables

