



Community Benefit Fund

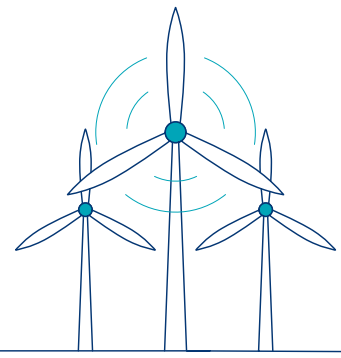
Coomatallin Wind Farm County Cork

We are here to answer your queries. If you have any questions, please do not hesitate to contact us:

Queries in relation to the Community Benefit Fund
Email: CommunityFundIreland@sse.com
or visit SSERenewables.com/CoomatallinFund

Queries in relation to the wind farms
Email: CLO@sse.com or visit
SSERenewables.com/onshore-wind/ireland/

About our Wind Farm



SSE have been investing in communities in Cork since 2006, when the **Coomatallin Community Fund was launched**. Coomatallin Wind Farm is a 6MW wind farm comprising of 4 turbines that are powering Irish homes and businesses with clean, green energy.

Proposed Extension of Operational Life

For nearly 20 years, the green energy produced by Coomatallin Wind Farm has been powering Irish homes and businesses, abating harmful carbon dioxide emissions and has played a key role in tackling climate change.

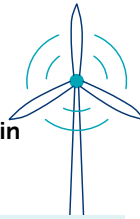
Coomatallin was granted planning permission in 2001 and entered commercial operation in 2006. The planning permission for the wind farm limits its operational life to 20 years from the date of commissioning. As modern turbines and associated wind farm infrastructure are capable of



Stay informed about Coomatallin Wind Farm Scan QR Code to access the latest updates.

operating for a period well in excess of the wind farm 30-years, we are now seeking to extend the operational lifetime of the wind farm by a further 20 years up to 2046.

An extension of life will also ensure the continuation of community funding, and that Cork County Council continues to receive rates payments linked to the wind farm, which contribute towards the provision of local services and infrastructure.



Benefits of Coomatallin Wind Farm



Powering Irish homes and businesses with clean, green energy.



The SSE Renewables Community Fund has distributed almost **€290,000** locally since 2006.



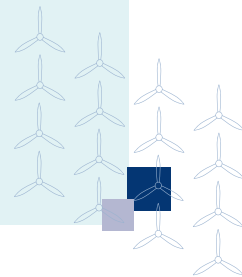
The 6MW wind farm comprises of **4 turbines** and was commissioned in 2006.



Rates payments to Cork County Council from Coomatallin Wind Farm contribute towards services such as roads, local infrastructure and public services.



Helping Ireland reach its **renewable energy targets**, combatting climate change.



SSE Renewables Focus

Our commitment is to engage inclusively with all our stakeholders in relation to the proposed extension of Coomatallin Wind Farm's operational life, through early and open dialogue.

We aim to design and build projects that contribute to local sustainable development, while supporting and enhancing a sense of community spirit and solidarity.

We circulated a letter to near neighbours living within 2km of Coomatallin Wind Farm in January and circulated an additional newsletter to households in April of this year, in addition to

engaging with other local stakeholders. We will also reach out to near neighbours and local stakeholders closer to the date of the submission of our extension of operational life planning application to Cork County Council.

Through the proposed extension of operational life, we are working in close step with the local community and helping to deliver Ireland's renewable energy targets.

Existing Fund

Through our community funds programme, we make annual contributions to community groups in the vicinity of our wind farms. Since 2006, SSE Renewables has paid over €2million in funding to community groups in Cork.

Vision

To empower local communities to create sustainable, impactful projects that contributes to the social, environmental and economic well-being of local communities, enhance the quality of life for all community members for decades to come.

Mission

To provide financial support to community groups developing projects that reflect local needs, align with the UN Sustainable Development Goals (SDGs), and uphold the principles of transparency, empowerment, and inclusion. As a source of private funding, SSE Renewables' voluntary funds can be used to meet

match funding requirement for public funding programmes, helping make applications eligible and enhancing the overall impact and viability of proposed projects.

Who can apply for funding?

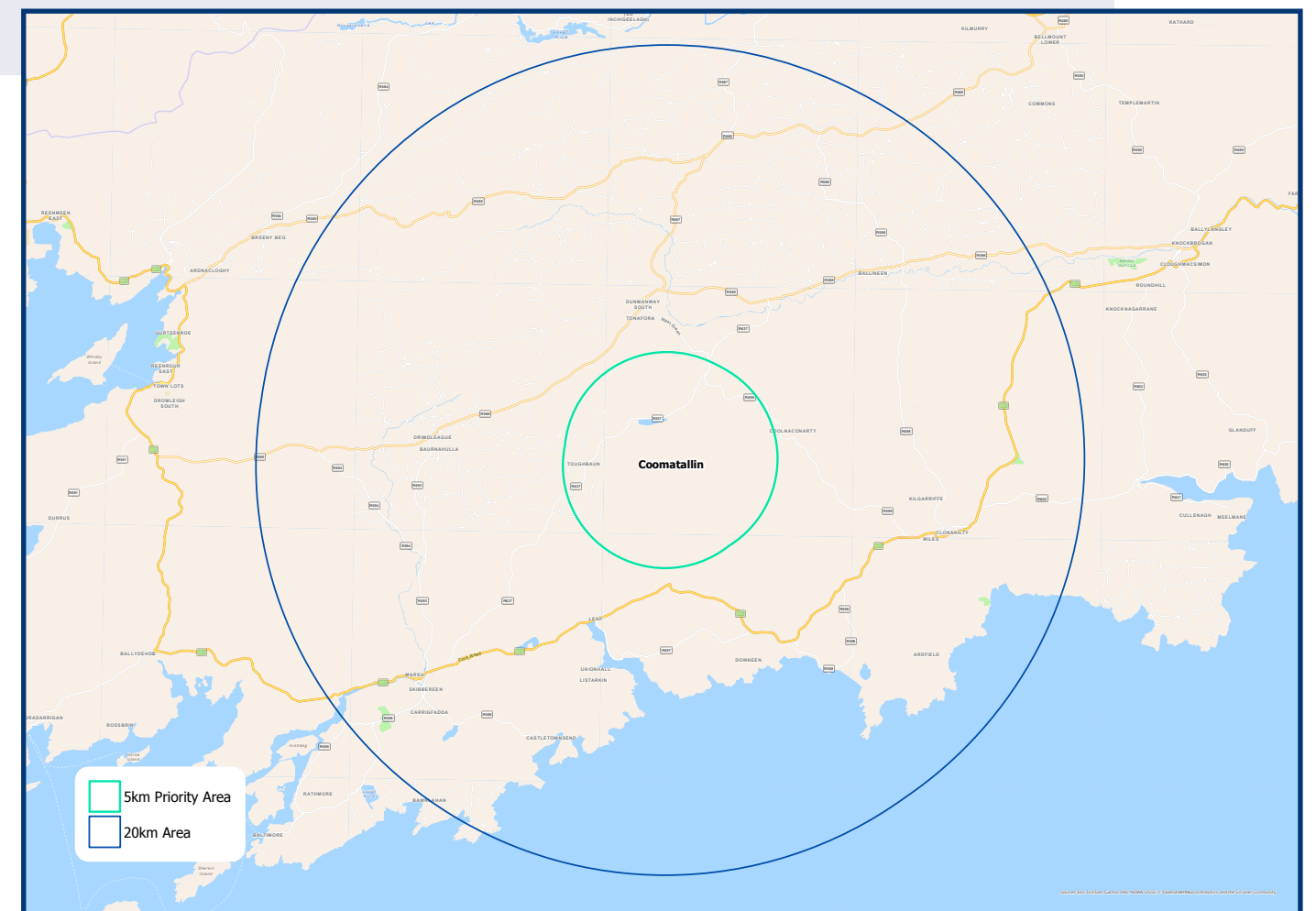
The SSE Renewables Community Benefit Funds are designed to support charities and voluntary not-for-profit organisations that provide meaningful, long-term benefit to communities located within a 20km radius of our wind farms, with priority given to projects and organisations based within a 5km radius.



Recipients from the Coomatallin Wind Farm Community Fund receiving their funding during a presentation held in Drinagh in 2023.

Area of Benefit

The below map outlines the Area of Benefit for Coomatallin Community Fund with priority given to groups within 5 km, followed by groups within 10 km and then out to 20 km from the centre of the wind farm.



What can be funded

The existing fund at Coomatallin considers applications for both capital and revenue funding.

Capital funding

For expenditure on new assets or the enhancement of existing assets. These should deliver clear and lasting benefit to the wider community and are expected to have a useful lifespan of at least 5 years.

Revenue funding

For project-related operational costs such as the delivery of training, workshops, community events or professional fees.

Strategic Objectives

Projects must contribute to one or more of SSE Renewables' strategic objectives:

■ Empowering Communities for a Green Transition:

Supporting community-led efforts that reduce carbon emissions, improve energy efficiency, promote circular economy practices, and enhance local biodiversity.

■ Sustainable Communities - Resilience, Equity and Learning:

Building community resilience through inclusive infrastructure, accessible education and skills development, social enterprise, and initiatives that support health and well-being.

Our fund's strategic objectives are aligned with the United Nations Sustainable Development Goals (UN SDGs), reflecting our shared commitment to creating lasting, and positive impact in the communities that host our renewable energy projects.

By investing in local initiatives, we seek to promote social inclusion, environmental sustainability, and community well-being, ensuring that the benefits of renewable energy extend beyond clean power to support strong, resilient, and thriving local communities.



Sustainable Communities
Resilience & Equity



Empowering Communities
Green Transition

**SUSTAINABLE
DEVELOPMENT
GOALS**

4 QUALITY
EDUCATION



SDG4: Quality Education

Ensure inclusive and equitable quality education and promote lifelong learning opportunities for all.

11 SUSTAINABLE CITIES
AND COMMUNITIES



SDG11: Sustainable Cities & Communities

Make cities and human settlements inclusive, safe, resilient and sustainable.

7 AFFORDABLE AND
CLEAN ENERGY



SDG7: Affordable & Clean

Ensure access to affordable, reliable, sustainable and modern energy for all.

13 CLIMATE
ACTION



SDG13: Climate Action

Take urgent action to combat climate change and its impacts.

For more information on the fund timetable, and guidance on how to submit an online application, visit:

SSERenewables.com/CoomatallinFund

Coomatallin review

2006/26



€289,014
total investment locally



156 grants
awarded

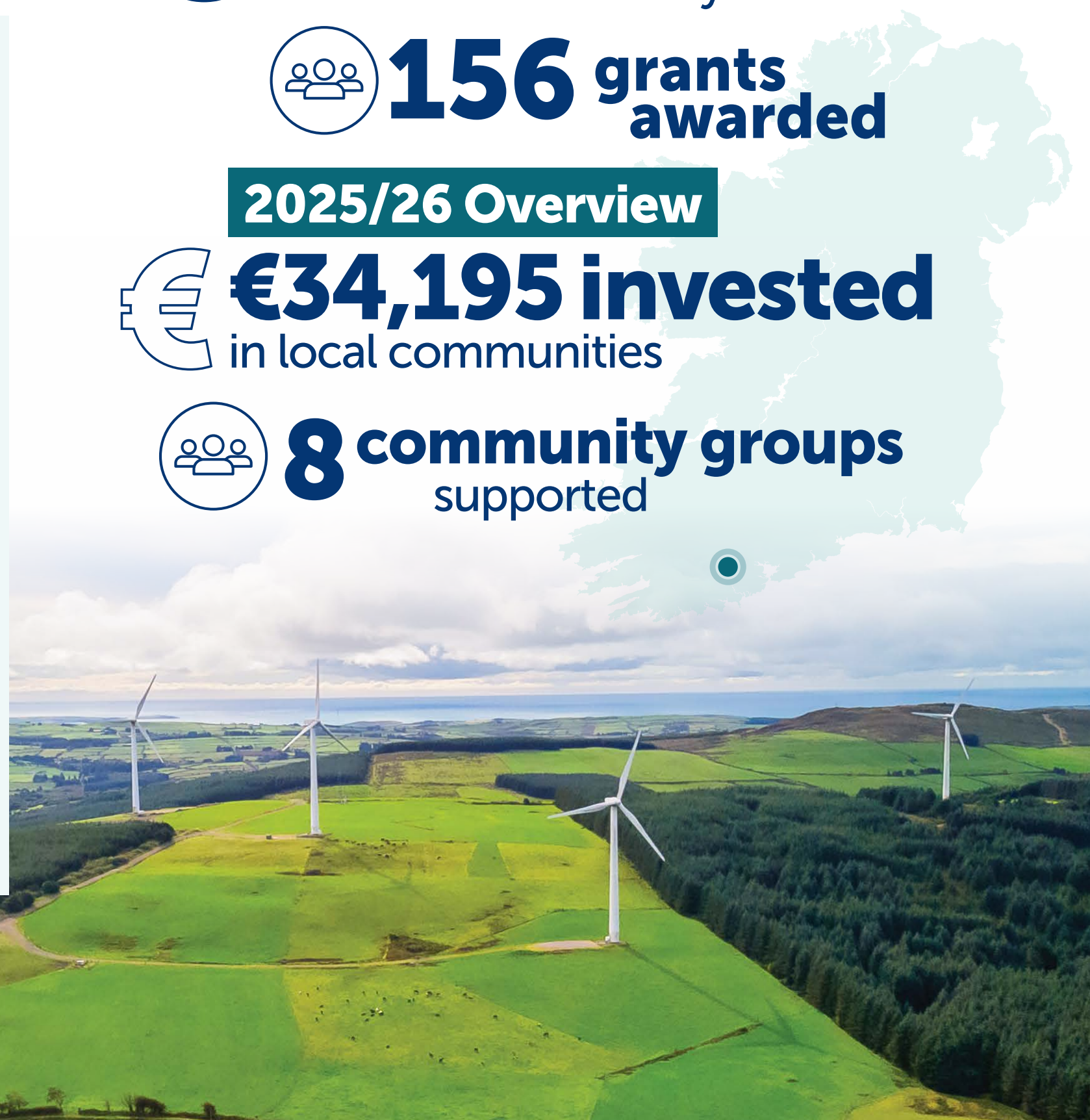
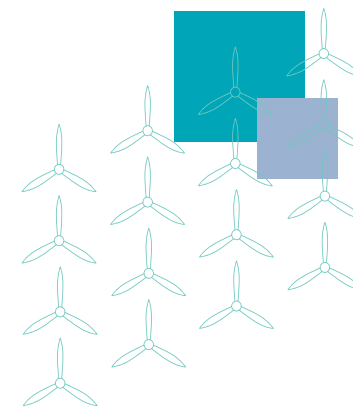
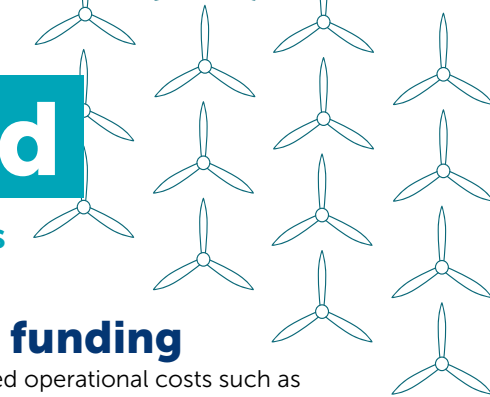
2025/26 Overview



€34,195 invested
in local communities



8 community groups
supported



Growing Together

Drinagh Rangers AFC €14,564

Since 2006, Drinagh Rangers AFC has received €14,564 from the SSE Renewables Coomatalin Community Fund— support that has empowered the community to enhance and expand its local community facilities.

The funding has enabled the installation of energy-efficient LED car park lighting, refurbished dressing rooms and bathrooms and improvements in relation to pitch drainage. These projects have made the club safer, more sustainable, and accessible year-round, welcoming players, volunteers, and families in all seasons.

Importantly, this support acted as a catalyst. It gave the community the confidence to build on and strengthen a

shared vision of the club as a space for connection, health and belonging. With improved facilities, Drinagh Rangers has evolved into a vibrant hub for physical activity, social interaction and community pride.

Beyond the infrastructure, this is a story of long-term impact, of how even small-scale funding can create meaningful change, advancing climate action SDG13 and building resilient, inclusive community resources SDG11.

The Coomatalin Fund has done more than enhance facilities, it's helped sustain a vital part of rural life, proving that with support, communities grow stronger together.



One Tree at a Time

Dunmanway Community Council €3,000

With €3,000 support from the Coomatalin Community Fund, Dunmanway Community Council is leading by example, taking practical, community-led steps to tackle the global climate crisis. Through wetland rejuvenation, habitat creation, and pollinator-friendly planting, the group is showing that small, local actions can have a meaningful impact.

Since receiving its first grant in 2010, the group have delivered climate-focused projects, these efforts play a vital role in climate adaptation and carbon capture, while also supporting local biodiversity. Their most recent project saw the planting of 40 pollinator-friendly trees in the town park, some of them fruit

bearing. These trees will provide shade, beauty and habitat, absorb CO2, support pollinators and offer food sources for both wildlife and the local community. To raise awareness, the group installed educational biodiversity posters, inviting residents to learn more about local biodiversity.

By taking action into their own hands, Dunmanway Community Council is demonstrating that climate solutions don't have to be large-scale to be effective. With continued support, their work is helping Dunmanway grow greener, more climate-resilient, and more connected, one tree at a time.



Bright Idea's Shared Spaces

Drinagh Community Association €20,000

Since receiving its first grant in 2006, Drinagh Community Association has delivered a series of smart, sustainable projects, each one rooted in local need and powered by community spirit. The association has used renewable energy and off-grid energy solutions to brighten public spaces, improve safety, boost biodiversity and enhance quality of life.

Following the success of the solar-powered public lighting with in-pole batteries installed at the tennis courts, the Association repeated the project again this year at the Curraghalcky Lake. These lights provide clean, reliable illumination to areas without a power supply, making community spaces safer and more accessible after dark, without ongoing energy costs. They directly support SDG7, SDG11, and SDG13.

A solar-powered speedometer was also installed to promote safer driving through the village. Off-grid and quietly effective, it offers a sustainable response to traffic concerns.

Meanwhile, pollinator-friendly planting projects and new public seating have transformed green spaces and lakeside areas into biodiverse retreats, supporting local wildlife and encouraging community connection.

Together, these initiatives show how modest funding can spark big change, fostering ownership, pride, and momentum. The Coomatalin Community Fund continues to demonstrate that local support fuels local solutions - and in Drinagh, that support is helping the village grow greener, safer, and stronger.



Building a Stronger Future

Drinagh National School €40,800

For nearly two decades, Drinagh National School in West Cork has steadily enhanced its infrastructure, learning environment, and environmental footprint, one project at a time.

With over €40,000 in support from the Coomatalin Community Fund, the school has delivered a range of impactful upgrades, including energy-efficient windows, LED lighting, PV panels generation and a new heating system.

A standout initiative is the Geo-Dome Gardening Project, an innovative "living classroom" where children engage hands-on with growing food, biodiversity, sustainability and climate awareness.

Drinagh National School is a shining example of how community funding can create lasting local impact — improving lives today, empowering the next generation, and protecting the environment for the future.



**For further information about
SSE Renewables, please contact:**

SSE Renewables.

Registered Office:
South County Business Park
Red Oak South
Leopardstown
Dublin 18
D18 W688

Registered in Ireland No.314061

sserenewables.com

Follow us on our social media channels for latest news from SSE Renewables



SSE Renewables works in Partnership with:

Páirc Ghaoithe
na Gaillimhe
Galway Wind Park



Lenalea
Wind Farm