

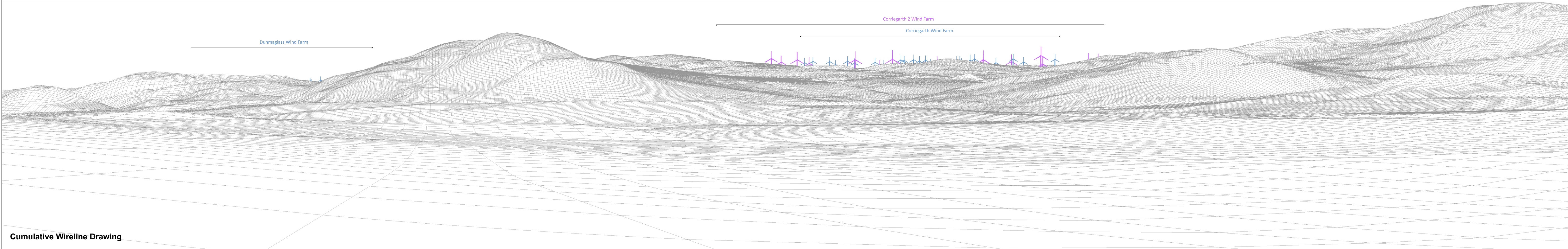
Bhlaraidh Wind Farm Extension Section 36C: EIA Report
Figure V3a 6.2a - Viewpoint 7: B862 south of Foyers - Baseline Photo and Cumulative Wireline

	Proposed Varied Development Wind Turbine		Consented Wind Turbine	OS reference: 249743 E 817317 N	Ground level: 174.7 m AOD	Direction of view: 290.2°	Nearest visible turbine: 10.1 km	Camera: Sony A7RIII ILCE-7RM3	Lens: 50mm (Canon EF 50mm f/1.2)	Camera height: 1.5m AGL	Date and time: 23/09/2020 11:55	Horizontal field of view: 90° (cylindrical projection)	Principal distance: 522 mm
	Operational / Under Construction Wind Turbine		Application / Appeal Wind Turbine										




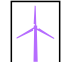


Baseline Photograph

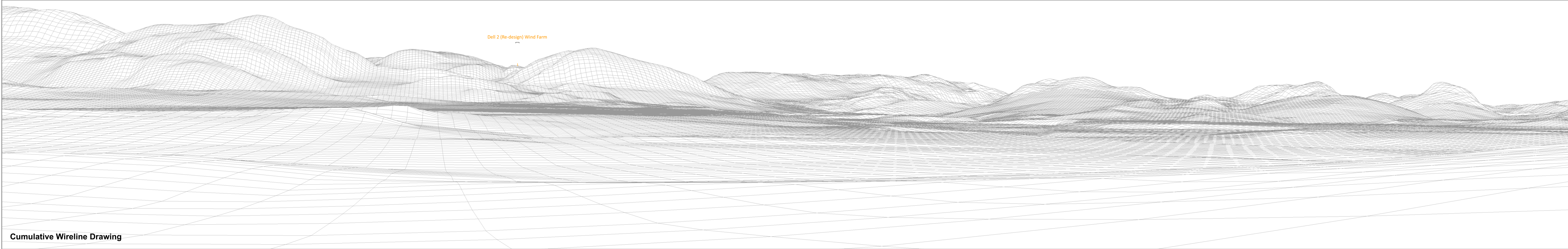
This image provides landscape and visual context only







Cumulative Wireline Drawing

Bhlaraidh Wind Farm Extension Section 36C: EIA Report
Figure V3a 6.2b - Viewpoint 7: B862 south of Foyers - Baseline Photo and Cumulative Wireline

	Proposed Varied Development Wind Turbine		Consented Wind Turbine	OS reference: 249743 E 817317 N	Camera: Sony A7RIII ILCE-7RM3	Horizontal field of view: 90° (cylindrical projection)
	Operational / Under Construction Wind Turbine		Application / Appeal Wind Turbine	Ground level: 174.7 m AOD	Lens: 50mm (Canon EF 50mm f/1.2)	Principal distance: 522 mm
				Direction of view: 110.2°	Camera height: 1.5m AGL	
				Nearest visible turbine: 10.1 km	Date and time: 23/09/2020 11:55	



Bhlaraidh Wind Farm Extension Section 36C: EIA Report
Figure V3a 6.2c - Viewpoint 7: B862 south of Foyers - Baseline Photo and Cumulative Wireline

	Proposed Varied Development Wind Turbine		Consented Wind Turbine	OS reference: 249743 E 817317 N	Camera: Sony A7RIII ILCE-7RM3	Horizontal field of view: 90° (cylindrical projection)
	Operational / Under Construction Wind Turbine		Application / Appeal Wind Turbine	Ground level: 174.7 m AOD	Lens: 50mm (Canon EF 50mm f/1.2)	Principal distance: 522 mm
				Direction of view: 200.2°	Camera height: 1.5m AGL	
				Nearest visible turbine: 10.1 km	Date and time: 23/09/2020 11:55	