



Lenalea Wind Farm

COMMUNITY BENEFIT FUNDING STRATEGY



FuturEnergy Ireland

 **sse**
Renewables

Contents

Introduction	03
About Lenalea Wind Farm	03
About SSE Renewables	03
About FuturEnergy Ireland	03
About Donegal Local Development Company	04
What is the Purpose of the Funding Strategy?	04
What Community Consultation and Engagement has been completed to date?	05
Overview	05
Purpose	05
Committee Overview Statement from the Consultation Report	05
What is a Community Benefit Fund?	06
Summary	06
Area of Benefit	07
What is a Community Benefit Committee?	08
About Lenalea Wind Farm Community Benefit Fund Committee	08
Code of Conduct for the Community Benefit Fund Committee	08
What are the Funding Strategic Themes and Objectives?	09
Strategic Theme 1 - Educational Supports for All Ages	09
Strategic Theme 2 - Promoting Health and Wellbeing in the Community	12
Strategic Theme 3 - Transition to Renewable Energy	13
Strategic Theme 4 - Sustainable Local Community Tourism Development	14
Strategic Theme 5 - Enabling Local Community Development	15
Strategic Theme 6 - Community Climate Action - Protect and Promote	16
How is the Community Benefit Fund Structured?	18
Near Neighbour	18
Local Fund	18
Major Projects Fund	18
Eligibility Criteria	19
Sustainable Development Goals	19
Social Economy	19
Are you Operating in the Social Economy?	19
Addtionality - National and Local	20
How to Apply for the Community Benefit Fund	20
Key Factors to Consider when Preparing a Funding Application	20
Funding Eligibility Criteria	21
How are Applications Evaluated?	22
Capacity	22
Project Finances	22
Deliverable Milestones	22
How you can Learn More	23



Introduction

About Lenalea Wind Farm

Lenalea Wind Farm is a 7 turbine 30.1MW wind farm located southwest of Letterkenny, County Donegal and is a joint venture between FuturEnergy Ireland and SSE Renewables.

The project entered construction in 2021 and reached full power and connected to Ireland’s national grid in late 2023, contributing to Ireland’s 2030 renewable energy targets. In May 2024, SSE Renewables and FuturEnergy Ireland announced they had entered into a long-term Corporate Power Purchase Agreement (CPPA) with Microsoft linked to Lenalea Wind Farm, securing a route to market for one of Ireland’s newest onshore wind farms. Under the CPPA terms, the renewable electricity produced by Lenalea Wind Farm will contribute towards Microsoft’s goal of powering its data centre operations with 100% renewable energy by 2025.

About SSE Renewables

SSE Renewables is a leading developer and operator of renewable energy generation, focusing on onshore and offshore wind, hydro, solar and battery storage.

Part of energy infrastructure company SSE plc, UK-listed in the FTSE100, it is delivering clean power assets to increase SSE’s operational renewable generation capacity from 5GW today to up to 9GW by 2027 as part of a €24bn clean energy plan, the five-year Net Zero Acceleration Programme (NZAP) Plus. This includes delivery of the world’s largest offshore wind farm in construction, the 3.6GW Dogger Bank Wind Farm.

SSE Renewables operates some of the largest onshore wind farms on the island of Ireland including the 174MW Galway Wind Park in Connemara and the 73MW Slieve Kirk Wind Park outside Derry City. SSE Renewables has a team of over 2,000 renewable energy professionals with a passion for championing clean energy delivery, each based across the markets in which it operates. Its core market focus is on the UK and Ireland, with a growing international presence in carefully selected markets in Continental Europe and Japan.

About FuturEnergy Ireland

FuturEnergy Ireland is a leading Irish wind developer established in 2021 as a stand-alone joint venture between Coillte and ESB. The company was formed with an aim to maximise the potential of Ireland’s unique wind and land resources and accelerate Ireland’s transformation to a low carbon energy economy.

The FuturEnergy Ireland portfolio comprises more than 30 projects at various stages of development. FuturEnergy Ireland is targeting the delivery of 1GW of renewable energy by 2030 through the development of high-quality onshore wind projects supported by battery energy storage facilities

About Donegal Local Development Company

Donegal Local Development Company (DLDC) is a community-led local development organisation, with almost 30 years' experience of delivering to communities on the ground.

DLDC provides a wide range of local development services with an aim to improve the opportunities for people and communities in County Donegal, to bring about positive changes in their own lives and in their community. As a local development partner DLDC is supporting SSE Renewables and FuturEnergy Ireland to work alongside the community to establish, the Lenalea Wind Farm DAC Community Benefit Fund Committee and prepare the Funding Strategy.



What is the Purpose of the Funding Strategy?

The Lenalea Community Benefit Funding Strategy provides information on all aspects of the fund and sets out a roadmap to maximise the fund impact for the community for at least 15 years, while the wind farm is operational. Six Strategic themes with corresponding objectives will provide a structure to ensure the benefit of the funds have enduring outcomes on the communities residing close to the wind farm in the short, medium and long term.

The principal funding priorities originating from the various community consultations are linked to the Sustainable Development Goals (SDGs) to guarantee the funding supports projects and initiatives that create a sustainable impact and legacy. This approach ensures a lasting social, environmental and economic effects on the community. Such projects will focus on addressing specific identified needs, fostering community engagement, and promoting sustainable development. This long-term funding strategy will evolve over time and will adapt to the needs and requirements of residents, community enterprises and organisations.

This funding strategy will be the guiding document for the initial three years of fund distribution for the committee. The committee has a three-year rotation period and during this three-year period members will review the fund's impact before their appointment ends. If after three years, the committee believe adaptations to the funding strategy are required, the community may be invited to review the funding strategy and suggest amendments in line with the guidelines.

What Community Consultation and Engagement has been completed to date?

Overview

As part of the development of the strategy, the differing needs and priorities of the community were considered. SSE Renewables and FuturEnergy Ireland, supported by DLDC delivered a public consultation process within the local area to get a better understanding of both the opportunities and threats related to the communities local to the wind farm.

The needs and priorities of the areas were captured in surveys and a comprehensive Consultation Report was developed to support the Lenalea Wind Farm Community Benefit Fund Committee when developing the strategy. The Community Consultation Report was published in May 2024 and can be accessed in the document section of the Lenalea Wind Farm website www.lenaleawindfarm.com.

Purpose

The purpose of the public consultation process was to:

- engage communities, individuals and local stakeholders in designing and developing the strategy.
- allow as many local community voices as possible to be heard when shaping strategic priorities.
- ensure maximum input from those impacted and living closest to the wind farm.
- research local and government policy to ascertain ways this fund can leverage maximum investment and impact for the communities living in the Area of Benefit.
- identify local representatives who will actively promote and advocate for the opportunities this Community Benefit Fund offers.

Committee Overview Statement from the Consultation Report

The community consultation brought to light several pivotal areas that require attention. First and foremost is the requirement for communities to become more energy-efficient and environmentally sustainable. This was closely followed by the need for education and training for young people which is essential for equipping the next generation with the skills and knowledge needed to thrive and to ensure that the younger generation stay within the region. Included within this theme would be the need for support with addiction issues for young people and their families. Similarly, services for the elderly must be enhanced to ensure a high quality of life for all age groups.

The Lenalea Community Benefit Fund could be leveraged as an enabler of the development of community facilities, such as community hubs, walkways, and greenways. This support will not only foster social cohesion but also promote health and well-being. Moreover, the preservation of culture and heritage, alongside the promotion of biodiversity and environmental education along with a focus on the Irish language would be transformational within the communities that would benefit from the community fund.

A focus on multifunctional sustainable public spaces can serve as versatile venues for various community activities, catering to diverse needs and interests. Each of these elements plays a crucial role in building a resilient and dynamic community.



What is a Community Benefit Fund?

Summary

A Community Benefit Fund is the means by which energy companies share the benefits they receive in renewable energy projects. SSE Renewables and FuturEnergy Ireland are committed to ensuring that communities can support sustainable initiatives and decide themselves what valuable local causes require support and financing.

Lenalea Wind Farm DAC will invest €2/MWh generated, meaning the fund could fluctuate annually depending on the wind farm's performance. It is estimated the Community Benefit Fund will be c.€150k per annum for 15 years. Applications from not-for-profit community groups, social enterprises, associations, including parent teachers and clubs and societies and similar non-profit entities with a focus on UN Sustainable Development Goals are invited to apply. The Community Fund will be administered as per industry best practice and guidelines as set out below:

- (a) A minimum of €1,000 shall be paid to each household located within a radius of 2 kilometers from the base of the nearest turbine.
- (b) A minimum of 40% of the funds shall be paid to not-for-profit community groups / social enterprises whose primary focus or aim is the promotion of initiatives towards the delivery of the UN Sustainable Development Goals, in particular, Goals 4, 7, 11 and 13, including education, energy efficiency, sustainable energy and climate action initiatives.
- (c) A maximum of 10% of the funds may be spent on administration.
- (d) The balance of the funds shall be available for applications from local clubs and societies and similar not-for-profit entities within the defined benefit area.

Funds will be distributed in line with the funding strategy, designed and developed in partnership with the Community Benefit Fund Committee and the local community, for the benefit of the defined "Area of Benefit".

The Community Benefit Fund will seek to align with local and government policy to ensure compliance, cooperation, and maximum impact is realised for the community living in the Area of Benefit.

Area of Benefit

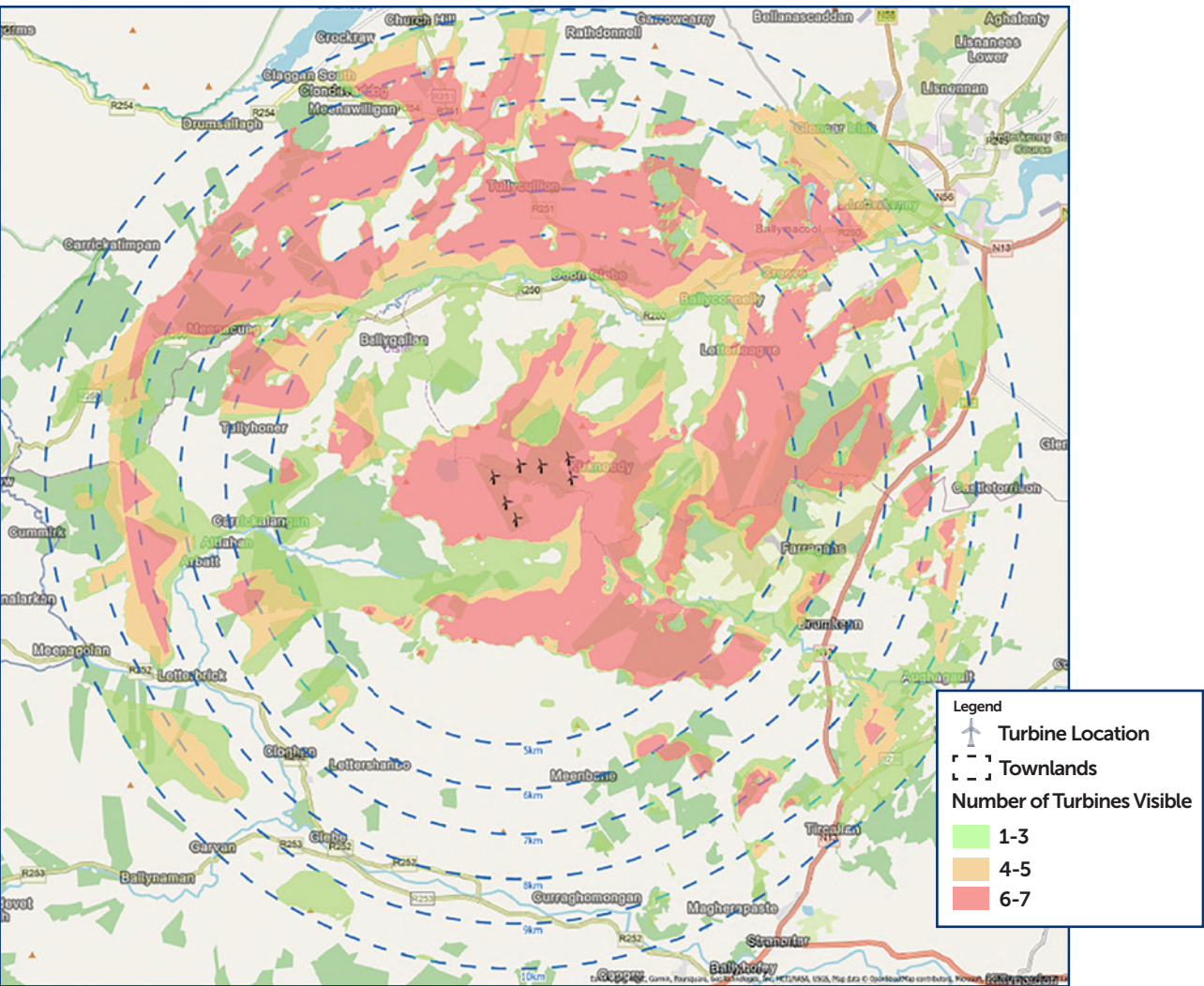
This refers to the specific geographic region that will receive the fund's support. Considering the population, the turbine visibility and the geographical area, the committee voted in favour of following the recommendations from the Renewable Electricity Support Scheme (RESS) Good Practice Principles Handbook for Community Benefit Funds. The Area of Benefit is defined as within 10km of a turbine with priority given to projects within 5km radius.

While the population is 23,732 within 10km, it was accepted that a lot of services and facilities might physically lie outside the 10km boundary line. The decision was made to introduce Flexible Boundaries, which in this context refers to a more inclusive approach to determining who meets the requirements. As long as the benefit is delivered to those living within 10km the project is eligible for consideration.

The Community Benefit Fund's Community Consultation report which incorporated Census based Small Area Population Statistics (SAPS) and the Pobal Deprivation Index, offered a detailed view of the demographic, social, and economic characteristics of specific local areas. This comprehensive data enabled the committee to make informed decisions, allocate resources effectively, and respond to the unique needs of the local population.

A further decision was made, specifically pertaining to the Local Fund. Applications will be accepted from projects outside the 10km but within 15km. A flexible boundary applies here also, and projects will receive points for proximity.

Turbine Visibility 10km



What is a Community Benefit Committee?

About Lenalea Wind Farm Community Benefit Fund Committee

The Community Benefit Fund Committee is made up of members of the local community surrounding Lenalea who will be the decision-making body for the fund. The Fund Committee comprises:

- Representatives for the Developers SSE Renewables / FuturEnergy Ireland
- Volunteer Community Representatives

The Good Practice Principles Handbook for Community Benefit Funds suggests it would be best practice for the local Fund Committee to determine a funding strategy for the Fund. The committee have participated in the design and supported the development of the previously published Community Consultation Report and this funding strategy is to ensure the funding priorities are fit for purpose and ensure community ownership of the fund. The committee has ultimate responsibility for ensuring the fund is allocated equitably to project applications which will create a lasting legacy and benefit to the community and environment in the local area.

Code of Conduct for the Community Benefit Fund Committee

The Lenalea Wind Farm Community Benefit Fund Committee has strict policies in place in relation to Conflict of Interest and Code of Conduct.

The committee also have a zero policy tolerance towards corruption, financial crime and criminality (including fraud), and the giving or receiving of bribes for any purpose. The committee members only have a role when the committee meeting is in session. All queries from the public should be directed to the Community Investment Team.

On no occasion should an applicant, any associated person with the application, elected representative etc. seek fund information from, or attempt to discuss a project with a committee member. The committee members are required to maintain confidentiality. If someone attempts to discuss an application with the committee member, it must be reported to the Community Investment Manager. This will result in their application being deemed disqualified. These actions are put in place to uphold the integrity and principles of the community benefit fund and the committee in all actions and decisions.



What are the Funding Strategic Themes and Objectives?

The 6 themes below were obtained from information received from the various community consultations as detailed in the Consultation Report. Local residents, community groups, and stakeholders identified a broad range of community needs, both local and regionally. These needs were consolidated into the community fund's 6 thematic priorities, which encompass education, social, economic and environmental aspects. The strategic themes were then broken down further into priority objectives.

Strategic Theme 1 Educational Supports for All Ages

Providing educational support for all in the community entails channelling resources to establish educational programmes, workshops, and initiatives. These serve the diverse interests and age groups, enhancing individual lives and also cultivating a more informed, engaged and prosperous community.

Objectives

Upskilling / Reskilling: Promote life-long learning by fostering a culture of continuous learning and skills development within the mainstream education system, adult and further education. Educate the community about the benefits of using renewable power, sustainability practices, conservation and the principles of the circular economy and how to apply them in community life.

Support with Green Skills Training: Develop local talent by supporting initiatives that provide people with the opportunities to gain qualifications, practical skills and work experience to facilitate pathways to employment.

Youth Facilities, Equipment and Initiatives: Improve infrastructure and promote inclusivity by investing in modern, safe and accessible facilities for youth activities and programmes.

Extracurricular Activities: Enhance educational opportunities by offering a wide range of extra-curricular activities to complement academic and personal development.

Boosting local community development involves empowering residents to shape their own futures and improve the quality of life for everyone.



Strategic Theme 2
Promoting Health and Wellbeing in the Community

Fostering health and wellbeing in the community involves promoting awareness about healthy lifestyles, organising wellness events, and collaborating with local organisations to provide access to healthcare resources for every stage of life.

Objectives

- Mental and Physical Health:** Provide funding for mental and physical health services to ensure all community members have access to necessary care.
- Youth Addiction and Mental Health Challenges:** Support initiatives that proactively address the issues arising for young people through comprehensive education, accessible resources and services, preventative programmes and community engagement.
- Enhance the Health and Wellbeing of Older People:** Develop support services and projects that enhance the social, emotional, physical needs and welfare of older members of the community.
- Community Wellbeing Initiatives:** Support events and activities that bring community members together to build strong social networks and connections.
- Promoting Accessibility and Inclusion:** Ensure public spaces and services are accessible to all.
- Integration of New Communities:** Support the integration and promote the diversity of new community members.
- Public Access Cycling and Walking Infrastructure:** Invest in the development and maintenance of infrastructure to promote healthier lifestyles, tourism expansion and community connections trails, greenways, walkways and cycle routes.
- Community Gardens and 'Grow your Own':** Promote sustainable gardening practices and food initiatives. Use community gardens as spaces for social interaction, education and collaboration among residents.



Strategic Theme 3
Transition to Renewable Energy

Community-driven renewable energy education and net-zero generation involves engaging residents in sustainable energy projects to implement renewable energy sources like solar and wind coupled with energy efficiency practices. Collaboration, education, and shared ownership are key components for success. Exploring alternatives to fossil fuels contributes to a sustainable and cleaner energy future for the community.

Objectives

- Solar PV Systems:** Promote the installation of solar panel systems to increase the use of renewable energy within the community to reduce the carbon footprint and enhance energy independence.
- Renewable Powered Equipment and Appliances:** Promote the use of energy efficiency, renewable powered equipment and appliances to reduce overall energy consumption and operating costs of community infrastructure, whilst increasing community awareness.
- EV Charging Infrastructure:** Develop a network of electric vehicle (EV) charging stations to support the growing number of EVs to reduce emissions.
- Community Energy Generation:** Empower local communities to consider generating their own renewable energy through collective projects such as community solar and wind farms to improve energy security and gain financial benefits for the community.
- Sustainable Energy Communities:** Develop initiatives that encourage residents and communities to adopt sustainable energy practices and reduce their carbon footprint.
- Smart Grid, Energy Storage:** Encourage the development and adoption of innovative energy storage technologies to support a sustainable energy future.



Strategic Theme 4
Sustainable Local Community Tourism Development

Sustainable local community tourism development requires fostering economic opportunities, promoting social inclusivity, and implementing environmentally conscious practices. Local community recreational development involves creating accessible spaces for diverse activities, promoting active lifestyles, and fostering a sense of community engagement. Balancing tourism growth with conservation efforts and involving the community in decision-making contributes to a more sustainable, responsible vibrant community.

Objectives

- Outdoor Tourism:** Promote natural attractions and develop amenities and services that improve visitor experiences, such as guided tours, sustainable tourism and information centres to attract tourists and boost the local economy.
- Recreation Tourism:** Invest in the development and maintenance of recreational facilities that promote health and wellness, such as parks, trails and sports complexes.
- Outdoor Recreational Spaces – Activities and Leisure Pursuits:** Develop a variety of outdoor recreational spaces that cater to different interests and age groups, while promoting inclusivity.
- Community-led Tourism and Festivals:** Support festivals and events that celebrate local culture, the Irish language and showcase the community’s unique culture, heritage, and recreational opportunities while boosting the local economy.
- Enhancement of Existing Tourist Attractions and / or Assets:** Invest in the renovation and enhancement of tourist facilities, preserve heritage sites to improve the visitor experience and increase visitor numbers while incorporating sustainable practices to minimise the environmental impact.



Lenalea Turbine © Stock Photo

Strategic Theme 5
Enabling Local Community Development

Boosting local community development involves empowering residents to shape their own futures and improve the quality of life for everyone. Through engagement with communities, active participation ensures that community development projects reflect the true needs and aspirations of the community. This approach creates a more vibrant, resilient, and self-sustaining community where everyone can thrive.

Objectives

- Multipurpose Community Facilities:** Develop versatile spaces that can host a variety of events and activities, for different groups, including youths, seniors and those with disabilities to foster community interaction and participation.
- Community Infrastructure:** Improve public amenities by investing in the development and maintenance of essential infrastructure that is safe, resilient and capable of withstanding environmental and societal challenges.
- Services / Initiatives:** Develop and fund services and innovative initiatives that address community needs and provide new solutions to ensure that services are inclusive and accessible to all community members regardless of background or ability.
- Community Transport:** Improve community mobility by developing and maintaining efficient and reliable public transportation options to enhance mobility for all community members, reduce the environmental impact and improve safety for road users.
- Establishment and Development of Collaborations and Networks:** Foster collaboration by encouraging partnerships between local, regional and national organisations, businesses, county councils and government.
- Town and Village Enhancement:** Support projects that celebrate and preserve the unique cultural heritage of towns and villages and encourage the beautification of public spaces, including parks, streetscapes, and community centres, which will in turn encourage economic activity.
- Addressing Dereliction:** Fund projects that revitalise and repurpose vacant and derelict properties for the long-term wellbeing of the community and promotion of tourism.



Strategic Theme 6
Community Climate Action - Protect and Promote

Community climate action and biodiversity involves promoting energy efficiency in homes, community buildings and public spaces. Habitat conservation and restoration, planting native species, creating green spaces and raising awareness of the importance of protecting local ecosystems are all vital steps towards mitigating climate change at local level. Biodiversity net gain projects aim to enhance or maintain biodiversity within a specific area and require monitoring and evaluation mechanisms to track the changes in biodiversity over time.

Objectives

Energy Efficiency - Community Assets Energy Upgrades: Reduce energy consumption by supporting programmes that fund retrofitting projects for community services that promote the use of energy-efficient technologies, lower carbon emissions and combat climate change.

Biodiversity: Support initiatives to restore, conserve, maintain and protect native vegetation and animal species, while promoting biodiversity awareness.

Circular Economy, Waste Management and Recycling Initiatives: Implement programmes and social enterprises that encourage waste reduction, innovative projects to repurpose, reuse and recycle within the community and reduce the environmental impact.

Native Tree-Planting and Community Woodlands: Promote the planting of native trees and the development of community woodlands to enhance the area, improve air quality, community engagement and support biodiversity by creating habitats for native wildlife.

Conservation of Lakes, Forests, Rivers and Coasts: Develop and fund projects aimed at conserving and restoring lakes, forests and rivers, promoting sustainable use and enhancing the health and resilience of local ecosystems.

Pollinators, Parks and Gardens: Support the creation and maintenance of habitats that support pollinators such as bees, butterflies and other beneficial insects which will enhance public spaces, promote sustainable gardening, and engage and raise awareness within the community.



Promote sustainable gardening and engage and raise awareness within the community.

How is the Community Benefit Fund Structured?

Near Neighbour

Residents living within a 2km radius of the base of the nearest turbine to the nearest part of the structure of the occupied residence will receive €1,000 per year. This is in line with RESS Good Practice Principles.

Local Fund

The Local Fund intends to support small local voluntary groups to pursue their objectives on behalf of the community as a whole.

It aims to support grassroots initiatives that enhance the well-being of local residents, improve public spaces and provide essential services. By empowering community and voluntary groups with financial resources, the fund fosters a sense of ownership and encourages active participation in local development efforts. This collaborative approach addresses immediate community needs but also builds a stronger, more resilient community for the future. The Area of Benefit is within 15km of Lenalea Wind Farm, but priority will be given to those located within 10km.

Major Projects Fund

The Major Project Fund seeks to support the costs to develop large-scale investment projects, which are aimed at driving local development and sustainability.

This fund provides substantial financial resources to initiatives that align with the SDGs and leverage additional funding from national funding streams to maximise its impact and ensure a broader reach. Ultimately, the fund empowers local organisations and social enterprises to implement sustainable solutions that address social and environmental challenges. The Area of Benefit will be within 10km of the wind farm but a Flexible Boundary allowing applications from projects outside the 10km that benefit those living within 10 km will be eligible to apply for funding.

Eligibility Criteria

Table 3: Eligible Major Project Costs

Eligible Project Costs	Theme 1	Theme 2	Theme 3	Theme 4	Theme 5	Theme 6
Campaign Development	✓	✓	✓	✓	✓	✓
Project Development	✓	✓	✓	✓	✓	✓
Employment support	✓	✓	✓	✓	✓	✓
Operational costs	✓	✓	✓	✓	✓	✓
Capital expenditure	✓	✓	✓	✓	✓	✓
Course Development	✓	✓	✓	✓	✓	✓
Educational Resources	✓	✓	✓	✓	✓	✓
Promotion	✓	✓	✓	✓	✓	✓
Interpretation	✗	✗	✗	✓	✗	✓
Multi Annual Funding	✓	✓	✓	✓	✓	✓

Sustainable Development Goals (SDGs)

The SDGs were adopted by the United Nations in 2015 as a universal call to action to end poverty, protect the planet, and ensure that by 2030 all people enjoy peace and prosperity.

Ireland’s Sustainable Development Goals National Implementation Plan 2022-2024 provides a whole-of-government approach to implementing these goals. The Lenalea Wind Farm DAC Community Benefit Fund will be underpinned by the objectives of the UN SDGs, with a focus on the following goals.



UN SDG 4. Quality Education
Ensure inclusive and equitable quality education and promote lifelong learning opportunities for all.

UN SDG 7. Affordable & Clean Energy
Ensure access to affordable, reliable, sustainable and modern energy for all.

UN SDG 11. Sustainable Cities & Communities
Make cities and human settlements inclusive, safe, resilient and sustainable.

UN SDG 13. Climate Action
Take urgent action to combat climate change and its impacts.

In order to ensure the committee awards optimum marks towards your project they will need to be able to assess the potential impact of your project under the above UN SDGs.

Early in the development stage of a project we invite applicants to consider its whole life impact. While your project will need to deliver an identified community need it will also have to deliver objectives from at least 2 of the 4 priority UN SDGs to score the minimum marks required to progress to Evaluation Panel.

You will be required to provide letters of support from an appropriately qualified expert to support the proposed outcomes and impacts. For example, if you are requesting funding for a local biodiversity enhancement project, you will need to obtain a letter of approval from the local biodiversity officer at your local authority.

Social Economy

“A minimum of 40% of the funds shall be paid to not-for-profit community groups and social enterprises”, organisations who are active or emerging in the Social Economy.

The social economy refers to a sector that encompasses a range of organisations and enterprises driven by social and environmental goals rather than solely for profit. It includes cooperatives, non-profits, community / social enterprises, and other entities that prioritise social impact while conducting economic activities.

Are you operating in the Social Economy?

When your organisation considers its’ revenue streams, are you offering any goods or services to the market / community for a fee?

Table 4: Social Economy Projects

Generate income from Buildings	Generate income from Assets	Generate income from Services	Non-Trading Income
Rent Rooms	Rental of Equipment / resources	Café – Food and Beverage	Grants
Rent office space	Organise Training Courses and charge attendees	Memberships / Subscriptions	Fundraising / Raffles
Rent space to other suppliers to hold courses or events Capital expenditure	Ticket sales - festival and / or events	Franchise agreements	Donations
		Admin supports	Social Loans

If you answered Yes to the above question, you are active in the Social Economy and therefore are eligible to apply to the Major Projects Fund.

Additionality – National and Local

The community benefit funding can help local communities to build capacity with a project, to support them to satisfy eligibility criteria to apply for co-funding or additional funds from other funding bodies.

The concept of additionality in the context of developing community benefit funds refers to the additional value or impact that the fund generates beyond what could have occurred without its intervention.

Leveraging additional resources is crucial when developing a funding strategy. It broadens the options available for delivering impact by;

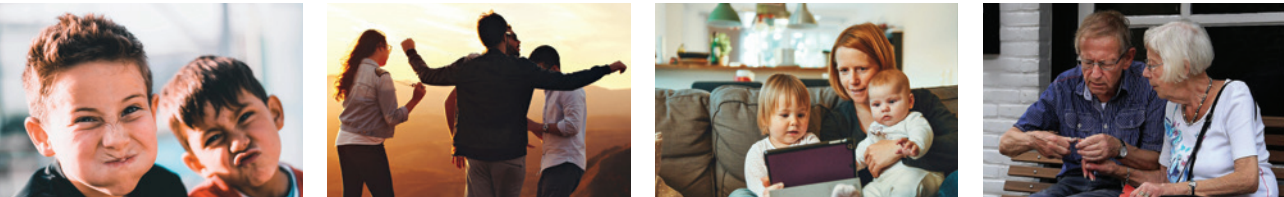
- reducing reliance on a single source of funding.
- considering areas where support is not already available.
- opportunity to be the seed funding to attract large scale capital investment.
- project development costs which are ineligible to other funds.
- navigate uncertainties in the funding landscape with social finance.

How to Apply for the Community Benefit Fund?

The Fund is open to not-for-profit groups such as community and voluntary groups, charities, community / social enterprises, clubs and societies that have a constitution or similar constitution document and a bank / credit union account.

The Lenalea Community Benefit Fund supports projects that will create positive social and environmental impacts ensuring the communities adjacent to the wind farm receive real and tangible benefits from the development that will create a sustainable legacy.

All applications are online through a new custom-built system for Community Benefit Funds. The online portal will be open for applications in Q1 2025.



Key Factors to Consider when Preparing a Funding Application

- **Fit with the Fund:** To what extent does the proposed project contribute towards the Fund’s overall purpose and priorities?
- **Evidence of Demand / Need for Project:** To what extent does the proposal demonstrate and respond appropriately to local demand / need, now and in the future?
- **Value for Money:** To what extent does the project represent value for money when compared with the anticipated outputs, beneficiary numbers and impacts?
- **Community Engagement:** To what extent has the community been engaged in developing the project and to what degree will they be involved in implementing it?
- **Additionality:** Which of the following additional outputs does the project deliver?
 - protecting jobs
 - creating job opportunities
 - generating sustainable income
 - attracting local fundraising
 - securing other funding
 - establishing or safeguarding a community service or asset

Funding Eligibility Criteria

All applications will be assessed and scored, and an appraisal will be made on each of them, these appraisals will then be issued to the committee for decision.

All applicants must have:

- A constitution - groups / organisations should be properly constituted with a constitution that is signed and dated and outlines the group / organisation’s purpose, as well as its governance and committee structure.

The constitution should include confirmation that:

- The organisation has social or charitable purpose
- Is not for profit in nature; and that
- No directors or trustees are remunerated.
- Financial Statements that are produced according to requirements set out by the Charities Regulator or Companies Registration Office (the CRO).
- Organisational Bank / Credit Union account – A bank / credit union statement showing the name and address of the group applying for the grant, IBAN, BIC and bank branch details dated within the last 3 months must be submitted at the application stage.

All project expenditures must be made through this account and grant payments will be paid into this account.

Grant offer letters will be issued to those successful and once signed and sent back payment will be issued.



How are Applications Evaluated?

As well as the criteria set out in the How Is the Community Benefit Fund Structured section, the following factors will also be used to evaluate funding applications.

Capacity

During project application appraisal stage, a group's capacity to deliver will be assessed. We encourage local community groups to build capacity and commence / continue their journey to good governance by upskilling in advance of the fund opening.

Project Finances

Project finances for community projects refer to the budgeting and funding aspects associated with the implementation of a particular initiative within a community.

Financial planning is crucial for the success of community projects, ensuring that the necessary resources are available and allocated efficiently to achieve the project's objectives.

This includes:

- Developing a funding model to sustain the project into the future.
- Securing quotes for the costs involved in executing the project.
- Developing a financial plan to support its completion.
- Identifying potential funding sources.
- Fundraising locally for the project.
- Agreeing a percentage of the organisations reserves you intend to invest in the project.
- Securing loan and / or bridging finance or letters of comfort from the bank or other social financiers.

Deliverable Milestones

Deliverable milestones are specific points in a project timeline that mark the completion of key tasks or objectives.

These milestones track progress, measure performance and ensure that the project is on track to meet its goals. It is important to read the call details carefully as projects are required to be deliverable within a fixed timeline.

When applying, projects should be "shovel ready", which means they are ready for implementation and the project finances / bridging finance is secured and in place. In the case of construction projects, this would require that all the land ownership, lease agreements, planning permission, permits, and approvals are secured and in order prior to application.



How you can Learn More?

If you want to learn more about the Lenalea Community Benefit Fund, please get in touch with our Community Investment Manager.

You can contact them on lenaleacbf@sse.com

You can get a copy of the Funding Strategy, the Community Consultation Report and other funding application resources on the dedicated Lenalea Wind Farm website: www.lenaleawindfarm.com

If you would like to be kept informed about any updates in relation to the **Community Benefit Fund** you can sign up here.



www.lenaleawindfarm.com

If you would like any further information about Lenalea Wind Farm please contact the Community Liaison Officer Seamus Herron on **seamus.herron@sse.com** or alternatively **lenaleacbf@sse.com**

