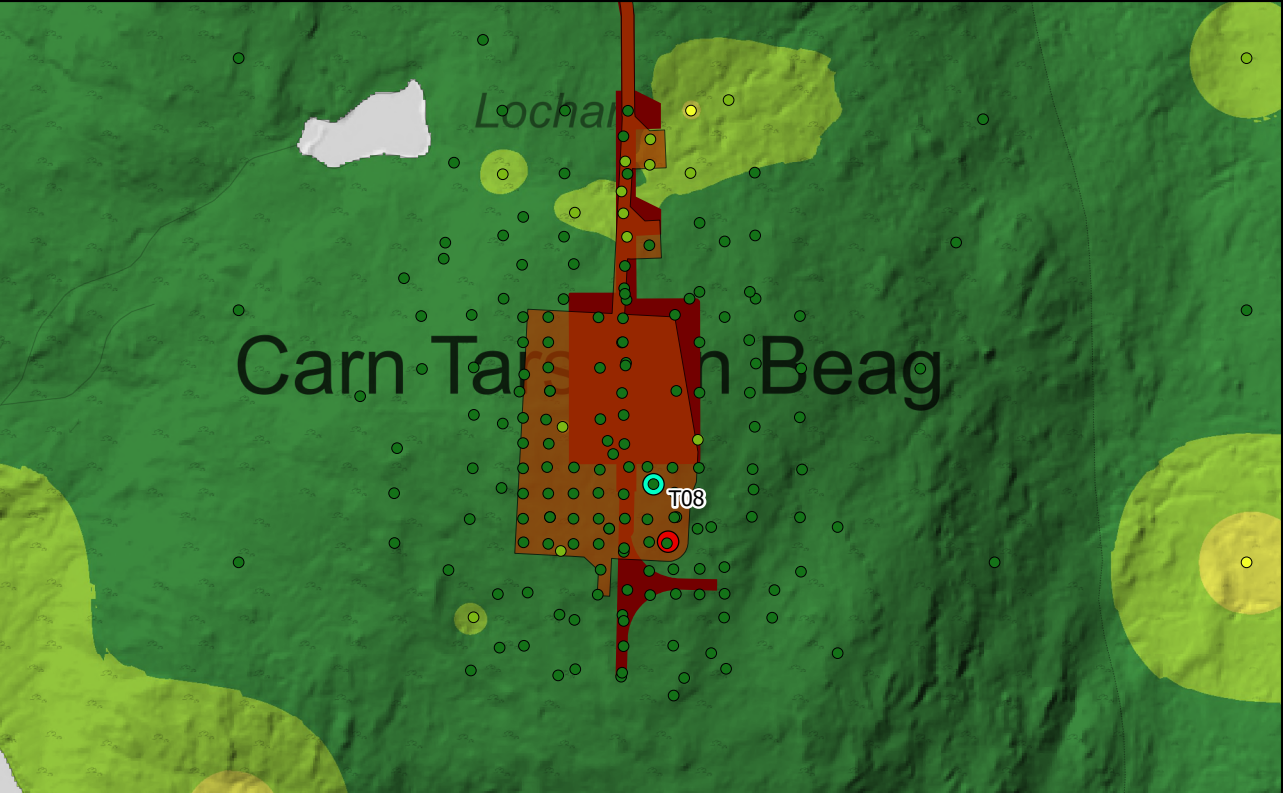
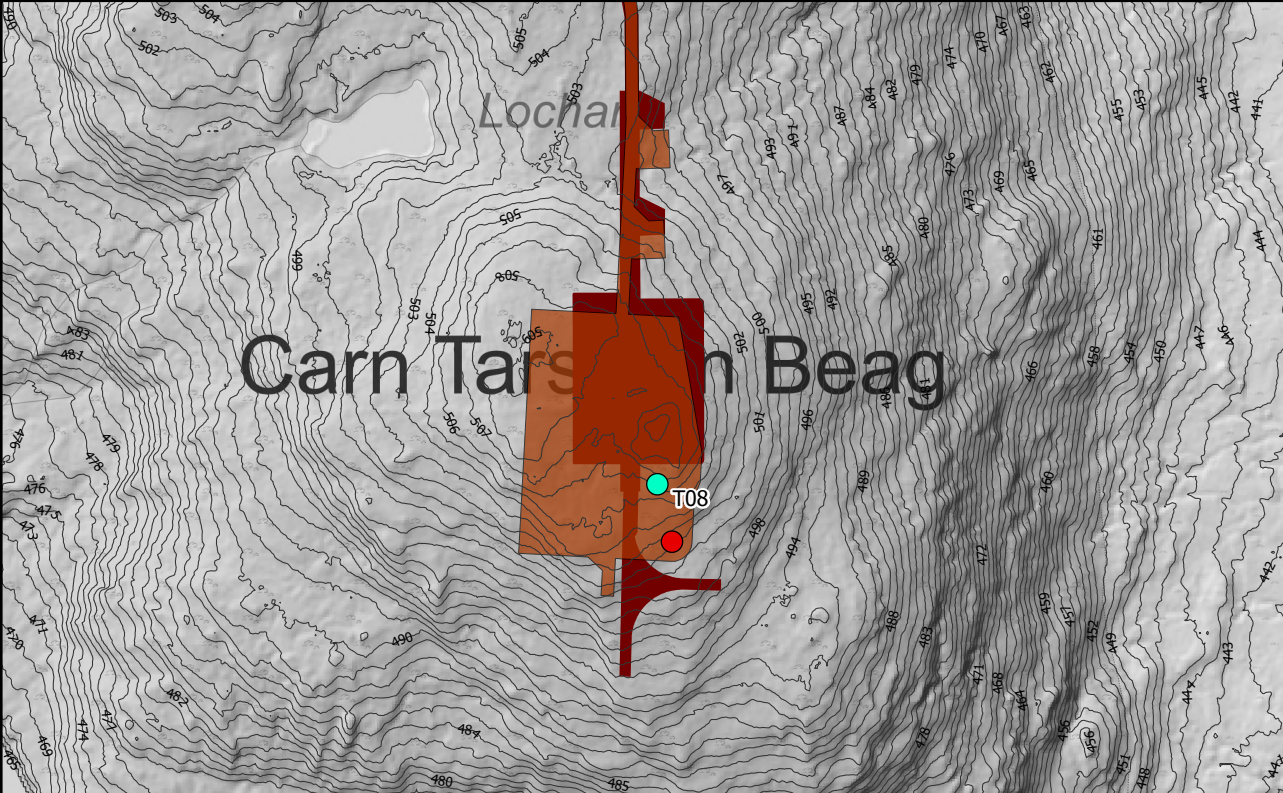
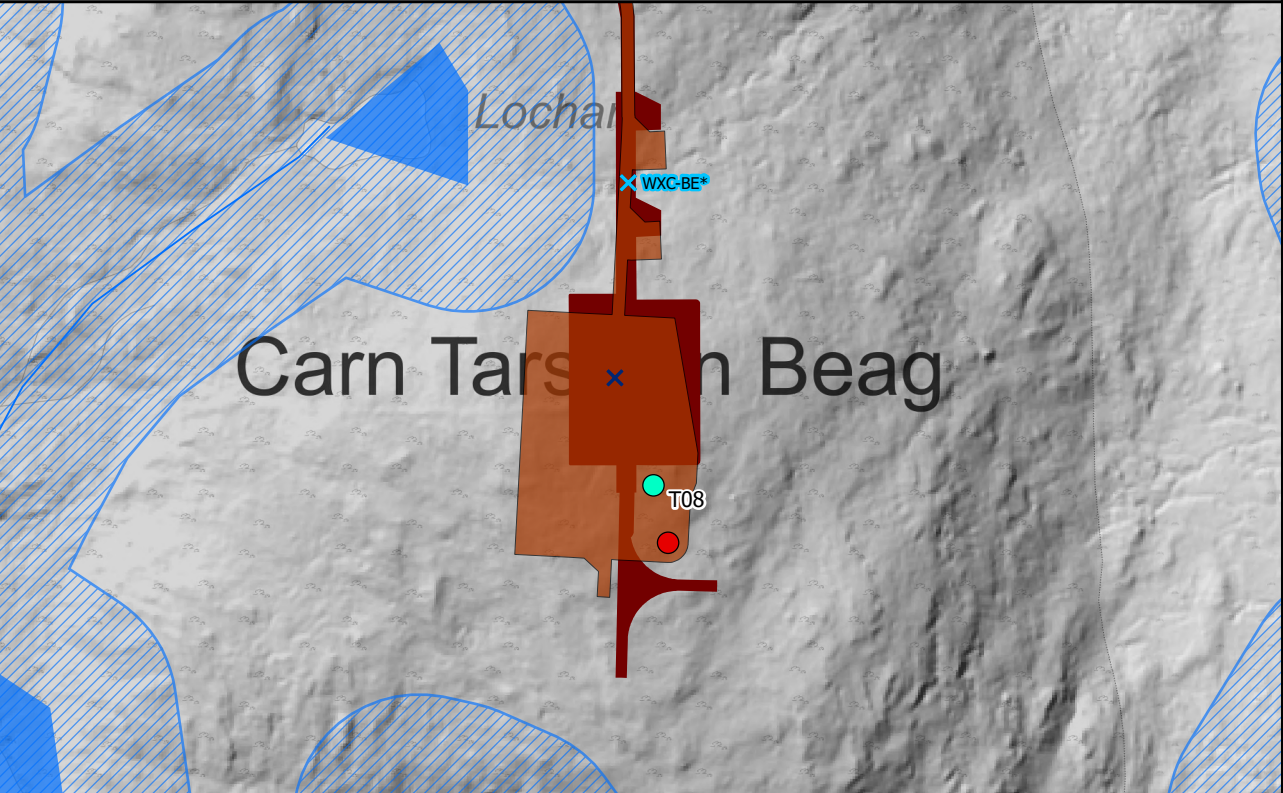
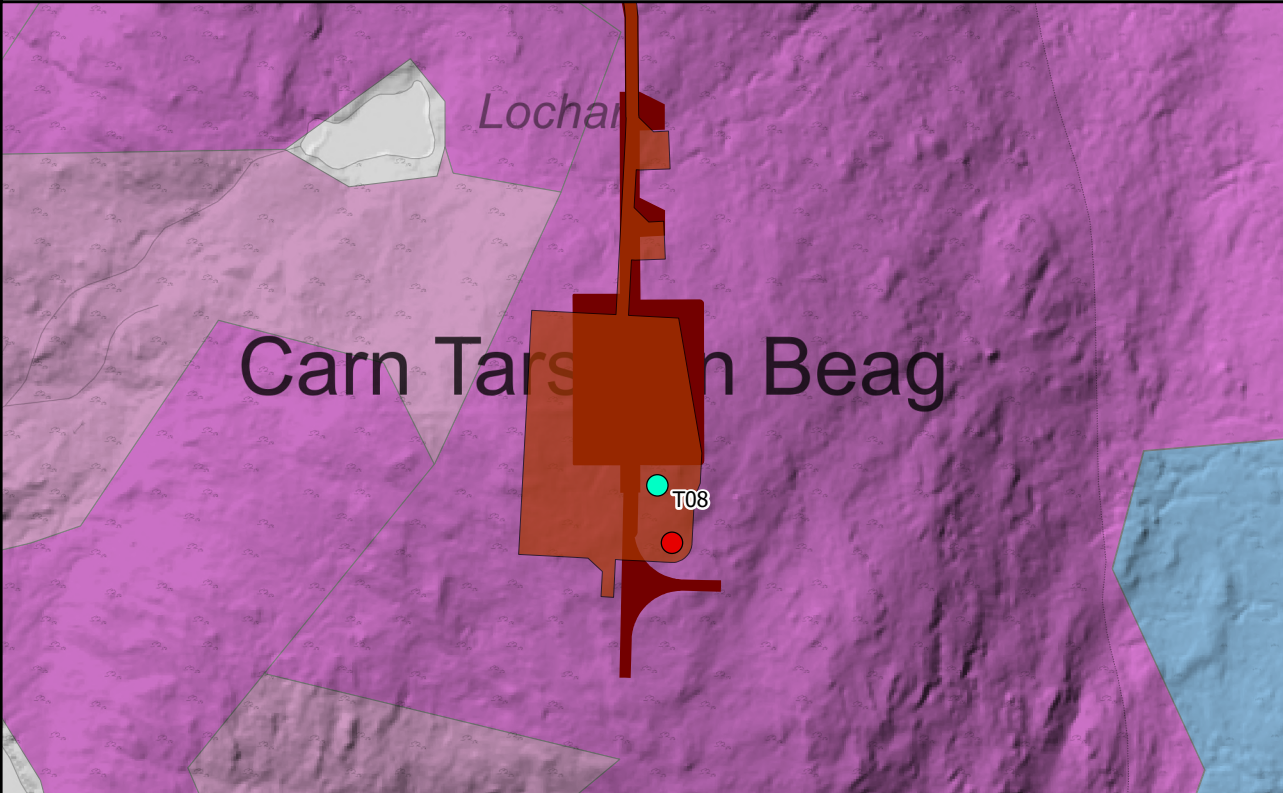


T08: Reason for Moving: This move helps maintain an acceptable level of turbine spacing to T07. Although the spacing is less than the desirable three rotor diameters, it is deemed acceptable as the neighbouring turbine is not within the predominant wind direction of this location. Additionally, it moves the rotor swept area outside the 2nd Fresnel zone of the communications link between the existing Bhlaraidh Wind Farm site and Corrie Garth substation. This potentially eliminates the need to construct a new communication mast East of T16.



Engineering: With the movement of the Turning Head to the track between T07 & T08, this has allowed the Hardstand to be moved south. The position of the Hardstand has been located to avoid the steep slopes South of the turbine location.

Geology Impacts: The proposed infrastructure location is within the consented 50m micrositing buffer, including the hardstand, track, and turbine location. All infrastructure is situated in shallow peat. Moving the turning head to a location between T07 and T08 removes the need to build a turning head at the end of the track south of T08.



Ecology Impacts: As with the current consented infrastructure, the new layout is entirely within Wet Heath (M15c).

Hydrology Impacts: The proposed location is outside the 50m water buffers. Similar to the current consented location, a watercourse crossing is required on the track at the entrance to the hardstand.

Legend

- Site Boundary
- Consented Turbine Location
- Proposed Varied Turbine Location
- Proposed Varied Development Layout
- Consented Development Layout
- No Change to Consented Development
- Consented Borrow Pit Excluded From Proposed Varied Development

Engineering

1m Contour

Geology

Peat Depth (m)

- 0 - 0.5
- 0.5 - 1
- 1 - 1.5
- 1.5 - 2
- > 2

0 - 0.5

0.5 - 1

1 - 1.5

1.5 - 2

> 2

Potential Peatland Restoration Areas

Ecology

NVC

- M15c
- M17/M17a/M18a/M19a
- M17a

Hydrology

- Consented Water Crossing
- Revised Water Crossings
- Watercourses (Based on OS 50k)
- Waterbodies (Based on OS 50k)
- 50m Water Buffer (Based on OS 50k)

Scale 1:3,000 @ A3

0 80 m

N

Figure 2.1h

Infrastructure Design Review

- Turbine 08

Bhlaraidh Wind Farm Extension

S36C Varied Development