



Photomontage

FIGURE 7.10.4.2 - VP4: Carn na Saobhaidhe

OS reference: 259863 E 814300 N Distance to development: 10.6km Ground level: 805.8m AOD Direction of view: 213.68°
Camera: Canon EOS 5D Mk II Focal length: 50mm vertical (27°) x 28mm horizontal (65.5°) Camera height: 1.5m Date: 03/10/2019 Time: 08:10
Drawing No. - 118025-D-LVIA7.10.4.2-3-1.0.0 Date - 17.04.2020

The images contained on this page and the following are not representative of scale and distance from the actual viewpoint and shows the wind farm development in its wider landscape context only.



Existing View

Terrain model



Proposed Development
Wind Turbine



Stronelaig Wind
Farm Turbine

OS reference: 259863 E 814300 N Distance to development: 10.6km Ground level: 805.8m AOD Direction of view: 213.68°
Camera: Canon EOS 5D Mk II Focal length: 50mm vertical (27°) x 28mm horizontal (65.5°) Camera height: 1.5m Date: 03/10/2019 Time: 08:10

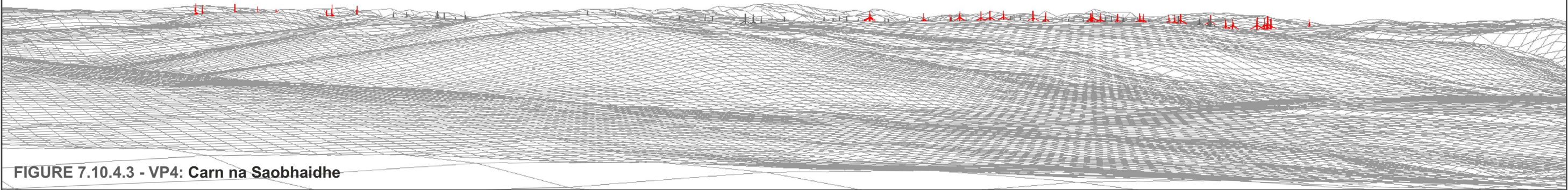
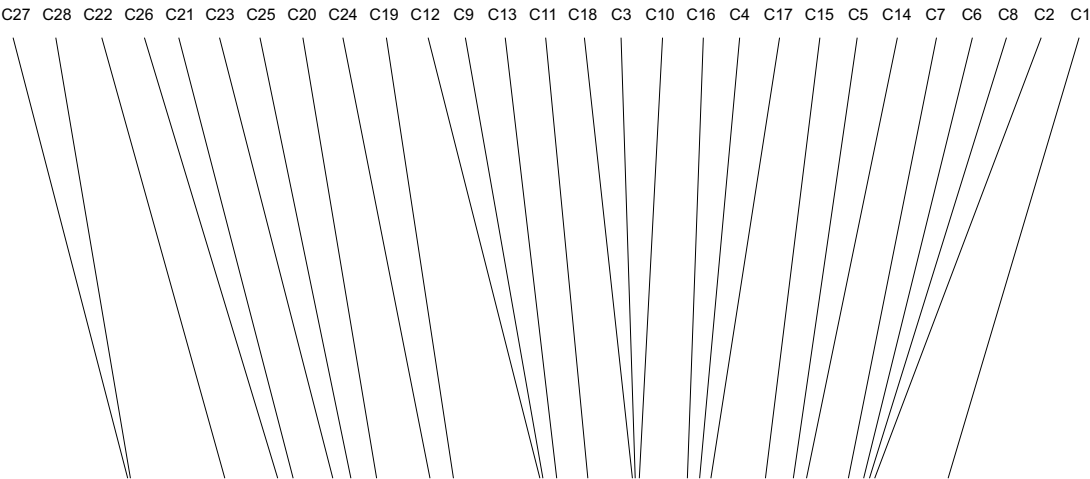
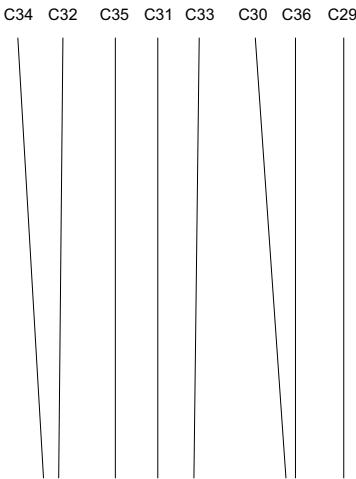


FIGURE 7.10.4.3 - VP4: Carn na Saobhaidhe