

# Safe fishing operations & navigation

## Seagreen wind farm

### Key MCA guidance

#### MGN 313 (M+F):

Safe navigational watch on fishing vessels. Reinforces the duty of skippers and watchkeepers to maintain a proper lookout at all times, especially important when operating within offshore wind farms.

#### MGN 372 Amendment 1 (M+F):

Guidance to mariners operating in the vicinity of UK Offshore Renewable Energy Installations (OREIs).

Details safety zones, transit routes, planning, and operational precautions.

#### MGN 654 (M+F):

Safety of navigation in and around Offshore Renewable Energy Installations (OREIs).

Guidance on risk assessments, passage planning, and emergency response.

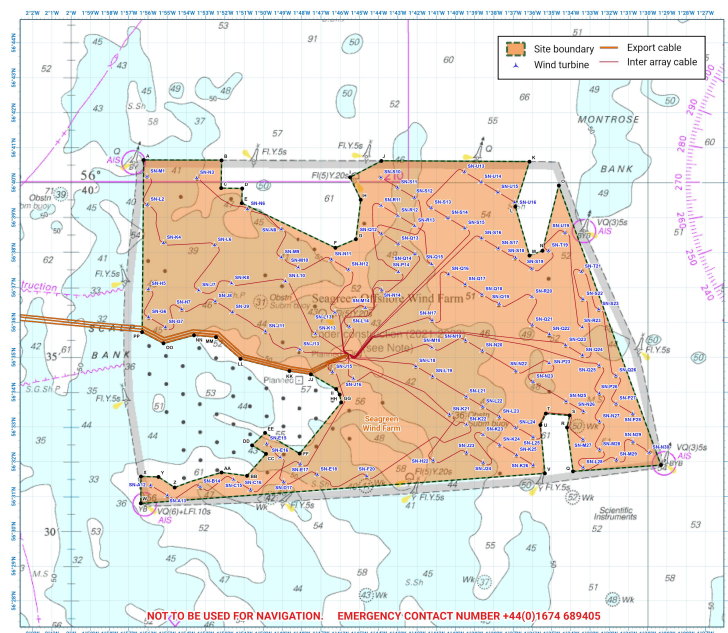
### Wind farm protocol

#### Prior to entering

- Check Notice to Mariners, updated charts and temporary safety zones
- Plan transit routes carefully
- Notify Seagreen MCC on entry/exit of site & inform of intentions

#### Within the wind farm site

- Maintain a safe distance. Turbines are spaced a min of 1000m apart, respect the non-statutory 50m advisory safety zones
- Monitor radar and keep sharp lookout, including radio listening watch on VHF Channel 16
- Maintain regular communication with MCC whilst operating within the wind farm
- Ensure AIS is switched on and operating at full power – this is for your safety (legal requirement on all vessels >15m)



### Incident reporting procedure

For any immediate SAR support, contact HM Coastguard on 999/VHF/DSC

Be ready to use VHF channels and report any emergencies immediately

- **Collisions:** Marine Guidance Note MGN 564 (M+F) – any collision must be reported to the MAIB and MCA. It is essential Seagreen MCC is also notified
- **Snagging:** Marine Guidance Note MGN 661 (M+F) – Inform the Coastguard, MCC and CFLO immediately. Follow KISORCA emergency procedures for fouling

### Incident reporting guidelines

1. Date and time
2. Vessel name and number
3. Position (lat, long)
4. Weather conditions
5. Course and speed
6. Description of event
7. Who was notified
8. Evidence of any damage
9. Person reporting the incident

### Incident reporting contact details

Seagreen Marine Co-ordination Centre (MCC) monitored 24h: 01674 689401 / 07342 027771

Maritime and Coastguard Agency (MCA): 999/Channel 16

Marine Accident Investigation Branch (MAIB): 023 8023 2527

Seagreen Commercial Fisheries Liaison Officer (CFLO): 07760 160039 / 07590 880746

To download this document, scan the QR code here ▶



Endorsed by:



Maritime and Coastguard Agency



Northern Lighthouse Board

