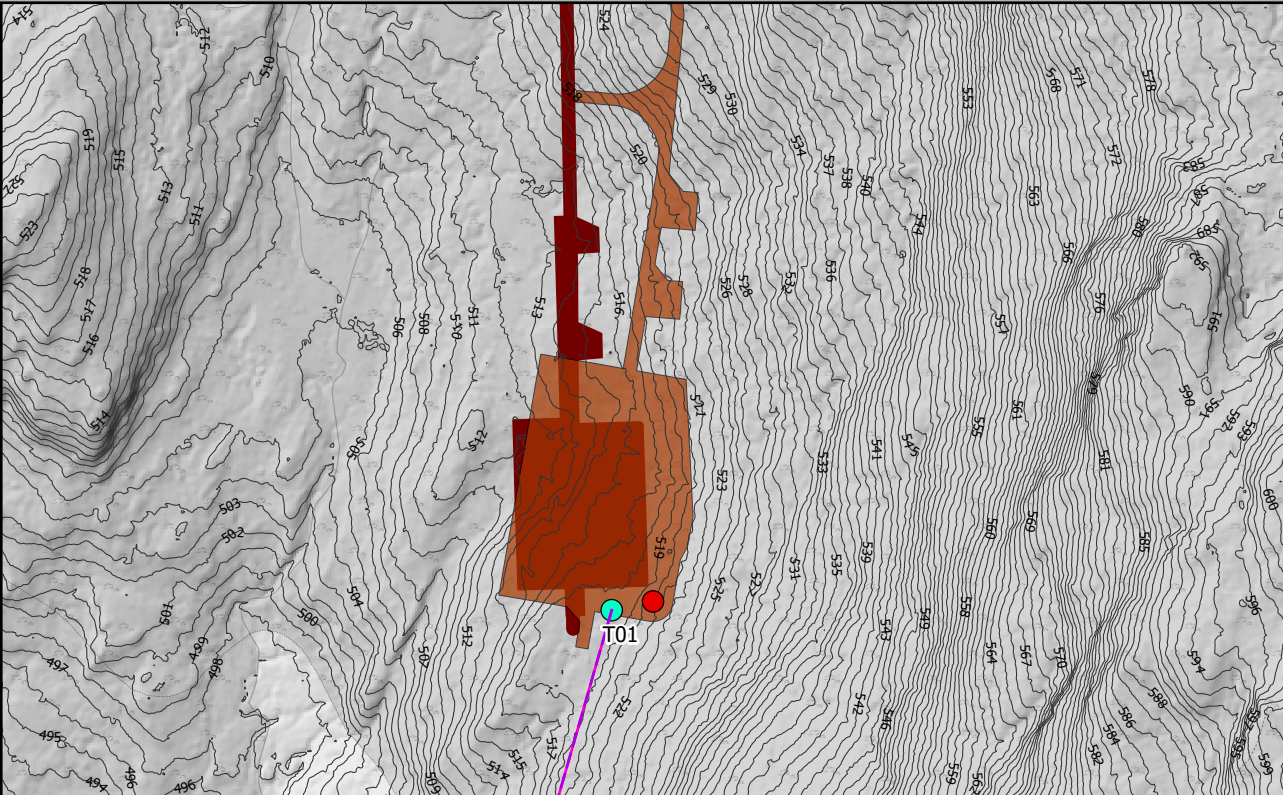
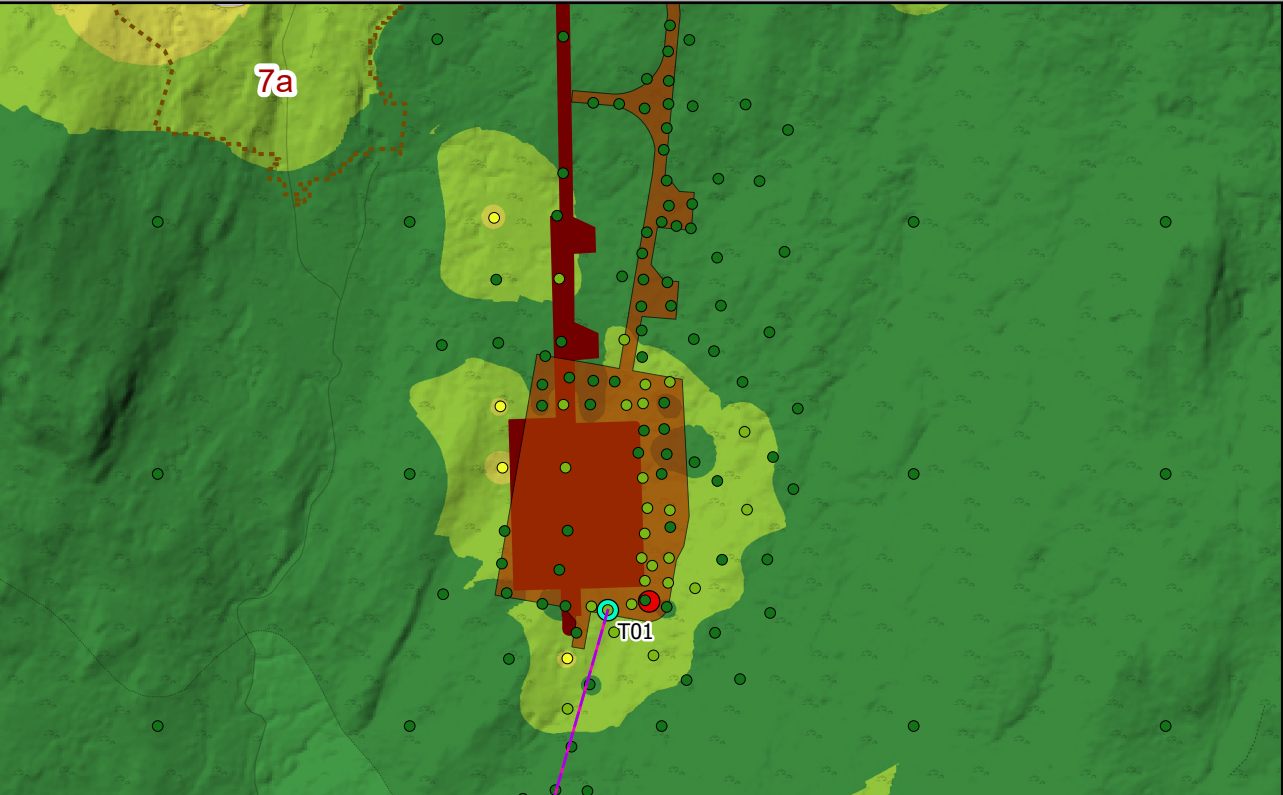


T01: Reason for Moving: The move was necessary to accommodate an unloaded turning head, allowing turbine delivery vehicles to exit the hardstand after delivery.



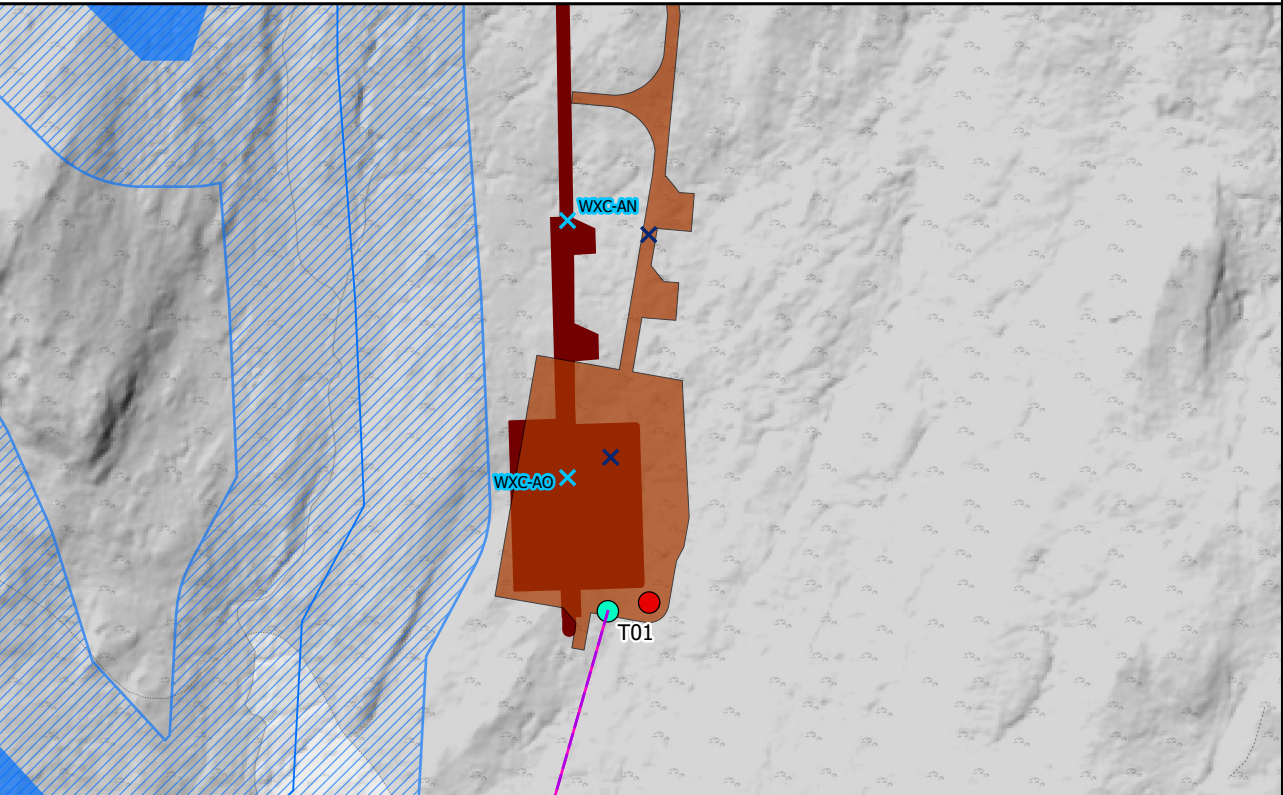
Engineering: The hardstand has been slightly rotated clockwise to achieve a better balance of cut-fill and to keep the new turning head at suitable distance from the 50m Watercourse Buffer



Geology Impacts: The larger hardstand and new turning head required the platform to be rotated clockwise. All proposed infrastructure within current consented 50m micro-siting buffers. All proposed infrastructure in similar peat depths and slide risk areas as the consented location.



Ecology Impacts: Rotating the platform ensures that the constructed infrastructure remains within the same NVC Survey habitat type (M15c) as the consented infrastructure.



Hydrology Impacts: The platform's rotation and new turning head move the construction away from the 50m water buffer. If the original alignment were used, the turning head would encroach into the buffer. Placing the turning head east of the track would require significant cutting. As per the current consented location, a water course crossing is required on the track at the entrance to the hardstand.

Legend

Site Boundary

Consented Turbine Location

Proposed Varied Turbine Location

Proposed Varied Indicative Cross Country Cable Route Alignment

Consented Indicative Cross Country Cable Route

Proposed Varied Development Layout

Consented Development Layout

No Change to Consented Development

Consented Borrow Pit Excluded From Proposed Varied Development

Engineering

1m Contour

Geology

Peat Depth (m)

0 - 0.5

0.5 - 1

1 - 1.5

1.5 - 2

> 2

0 - 0.5

0.5 - 1

1 - 1.5

1.5 - 2

> 2

Potential Peatland Restoration Areas

Ecology

NVC

H9e

M15c

M17/M17a/M18a/M19a

Hydrology

Consented Water Crossing

Revised Water Crossings

Watercourses (Based on OS 50k)

Waterbodies (Based on OS 50k)

50m Water Buffer (Based on OS 50k)

Scale 1:3,000 @ A3

0

80

m

N

Figure 2.1a
Infrastructure Design Review
- Turbine 01