



Lenalea Wind Farm

COMMUNITY BENEFIT FUND
Consultation Report
May 2024

FuturEnergy Ireland

sse
Renewables

Contents

INTRODUCTIONS	3
1.1 Background	3
1.2 About the Lenalea Wind Farm	4
1.3 Overview	6
1.4 Purpose	6
1.5 Overview of the Consultation Process	7
1.6 Key Stakeholders	8
PUBLIC CONSULTATION EVENTS	10
2.1 Calendar of Events	10
2.2 Drop-in Sessions - Advertising Activities	10
2.3 Overview of Drop-in Sessions	11
2.4 Lenalea Wind Farm Community Benefit Fund Committee	12
2.5 Lenalea Wind Farm Website	14
2.6 Overview of Youth Forums	15
KEY FINDINGS	18
3.1 Overview of Needs Assessment	18
3.1 Overview of Qualitative and Quantitative Survey	19
APPENDICES	20
4.1 Appendix 1 - Key Findings per Townland	20
4.2 Appendix 2 - Results of Qualitative and Quantitative Survey	22

Introductions

1.1 Background

FuturEnergy Ireland

sse
Renewables

Lenalea Wind Farm is a co-development project between **FuturEnergy Ireland and SSE Renewables.**

FuturEnergy Ireland

FuturEnergy Ireland is a leading Irish wind developer established in 2021 as a stand-alone joint venture between Coillte and ESB. The company was formed with an aim to maximise the potential of Ireland's unique wind and land resources and accelerate Ireland's transformation to a low carbon energy economy. The FuturEnergy Ireland portfolio comprises more than 30 projects at various stages of development.

FuturEnergy Ireland is targeting the delivery of 1GW of renewable energy by 2030 through the development of high-quality onshore wind projects of scale supported by battery energy storage facilities. Delivering 1GW of renewable energy would power an estimated 730,000 homes annually, make a significant contribution to Ireland's commitment to produce 80% of electricity from renewable sources by the end of this decade, and deliver material emissions reductions.

SSE Renewables

SSE Renewables is a leading developer and operator of renewable energy, headquartered in the UK and Ireland, with a growing presence internationally. Part of SSE plc, the UK-listed energy infrastructure company, its strategy is to lead the transition to a net zero future through the world-class development, construction and operation of clean power assets across a diverse mix of renewable technologies. SSE Renewables is investing around €7bn to 2027, or almost €4.5m a day on average, to support the delivery of SSE's Net Zero Acceleration Programme to address climate change head on.

This includes plans to increase installed renewable energy capacity to around 9GW by 2027, including the delivery of the world's largest offshore wind farm in construction. SSE Renewables has a team of over 1,500 renewable energy professionals based across the UK, Ireland, Spain, France, Italy, Greece, the Netherlands, and Japan, all committed to delivering the green energy the world needs now and in the future.

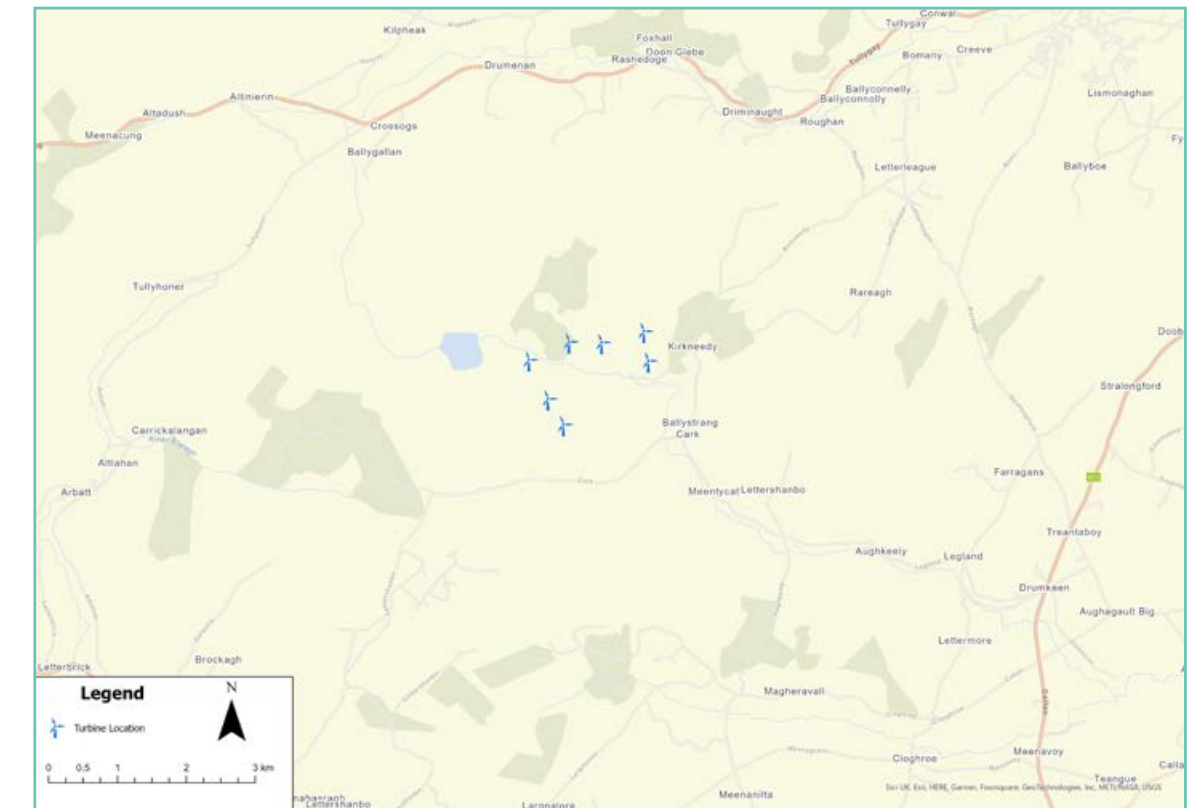
Lenalea Timeline

- January 2010: Original planning consent granted
- May 2018: Planning consent for grid connection
- October 2019: Grid connection offer received
- February 2021: Authorisation to construct & licence to generate
- April 2021: Mobilisation to site commences
- May 2021: Lenalea Wind Farm enters construction
- June 2023: First turbine installed
- August 2023: Seventh and final turbine is installed
- August 2023: Lenalea Wind Farm connects to Ireland's national grid

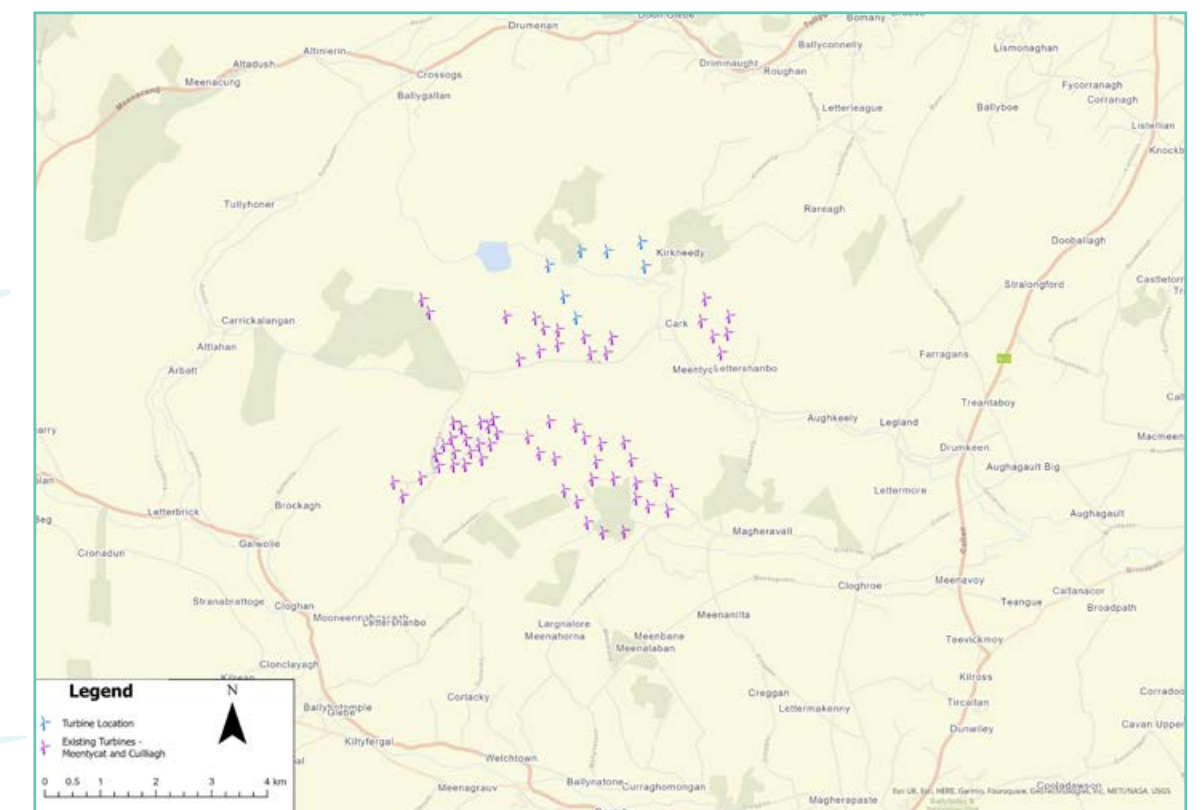


1.2.1 Map 1: Lenalea Wind Farm Location

The site is located in close proximity to the SSE Renewables wholly owned Meentycat cluster of operational wind farms.



1.2.1 Map 2: Location in relation to Meentycat



1.2 About the Lenalea Wind Farm

Lenalea Wind Farm is a 7 turbine, 30.1MW wind farm located at Kirkneedy, approx. 7km from Drumkeen County Donegal.

The wind farm is in the rural upland setting of central Donegal, within 10km southwest of Letterkenny within the townlands of Cark, Killymansy, Lenalea, Kirkneedy and Rareagh.

Now fully operational the wind farm is contributing to Ireland's 2030 renewable energy targets.

The project entered construction in 2021 and achieved full power and connected to the grid in late 2023.



1.3 Overview

In line with industry best practice, Lenalea Wind Farm will put in place a substantial community benefit fund to support local community enterprises and groups to deliver projects which will bring social, environmental or economic benefits to the area.

During the construction phase of Lenalea Wind Farm, SSE Renewables and FuturEnergy Ireland delivered several community consultation and youth forum events within the local area. This was to enable the developers to obtain a better understanding of the opportunities and key issues in the local community. This information will in turn help shape the Funding Strategy for the Community Benefit Fund which will be aligned with local knowledge of the area and will in turn define the funding priorities for the local community.

Donegal Local Development Company (DLDC) is supporting SSE Renewables and FuturEnergy Ireland to deliver the Lenalea Wind Farm Community Benefit Fund Strategy, having over 30 years' experience working directly with communities across Donegal specifically in the community development sector.

This report summarises the findings from the community consultation process and identifies where the local population feel there are gaps in services and provisions, as well as highlighting areas of interest and opportunity.



1.4 Purpose

The purpose of the Public Consultation Process was to:

- Engage communities, individuals and stakeholders in designing the strategy.
- Allow as many voices as possible to be heard when shaping strategic priorities.
- Ensure maximum input from those living closest to the wind farm.
- Identify local representatives who will actively promote the opportunities this Community Benefit Fund offers.
- Research local and government policy to ascertain ways this fund can leverage maximum investment and impact for the communities living in the Area of Benefit.



1.5 Overview of the Consultation Process

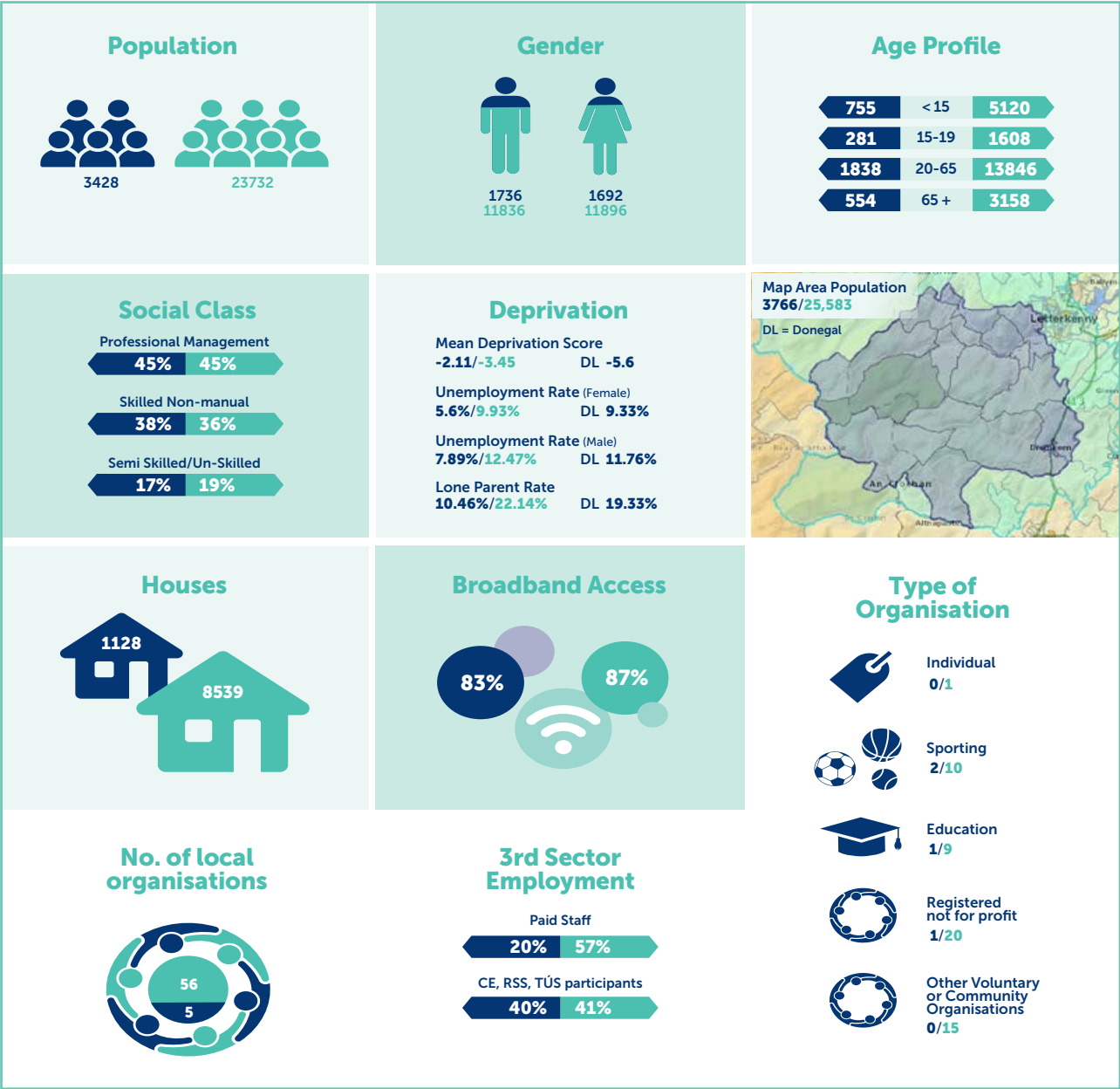
The table below outlines the range of activities undertaken to engage and consult with the community near Lenalea Wind Farm. This process has ensured a robust and comprehensive community consultation on the structure of the proposed Community Benefit Fund took place.

Activity	Description
Public Consultation Planning	<ul style="list-style-type: none"> Newspaper adverts Email invites Take away information brochure Information boards Website
Service Level Agreement (SLA) with Donegal Local Development Company	<p>Engaged Donegal Local Development CLG to support the administrator to co-facilitate the;</p> <ul style="list-style-type: none"> Community consultation events Establishment of a community committee Development of an action plan / funding strategy
Information Drop-in Sessions	<p>2 x drop-in information sessions held in Letterkenny and Ballybofey. These sessions provided project updates and information on the upcoming Community Benefit Fund.</p>
Paper Survey	<p>All attendees to the drop-in sessions were invited to complete a paper needs assessment or advised how to access the online version.</p>
Online Needs Assessment and Qualitative and Quantitative Surveys	<p>We invited the public to complete two online surveys to advise the Community Benefit Fund Committee on how best the community would like this funding invested.</p>
Online Information	<p>https://lenaleawindfarm.com/</p> <p>Community Section</p> <ul style="list-style-type: none"> Expression of interest to join the committee Online needs assessment Consultation event booklet pdf
Youth Forum	<p>In order to ensure all members of the community are represented we undertook youth forum discussions at two local schools in Stranorlar and Raphoe. This involved 3 group exercises;</p> <ol style="list-style-type: none"> SWOT analysis. Brainstorming issues or pressures felt by the youth and their community under 6 United Nations Sustainable Development Goals (UN SDG) categories. Suggest potential projects that would address the identified issues / pressures.
Meetings with Relevant Stakeholders	<p>Throughout the development, construction and post-construction stages of Lenalea Wind Farm, we have maintained regular contact with key stakeholders including Donegal County Council and political representatives at a national and local level.</p> <p>This has included regular engagement with Councillors across the County, Letterkenny Chamber of Commerce and a meeting with Donegal County Council in October 2023 to brief them on our footprint in the county, wider priorities in the North-West and the proposed Community Benefit Fund for Lenalea Wind Farm.</p>
Desktop Research	<div> <div> Area Profile <ul style="list-style-type: none"> Population Community Groups Social Enterprise Network </div> <div> Mapping Local / Regional Needs <ul style="list-style-type: none"> Donegal County Development Plan SICAP LEADER SEAI – Better Energy Community </div> </div>
Community Champions	<p>Those who expressed an interest in joining the Community Benefit Committee or to be kept informed about the Fund. All community organisations were invited by DLDC to register.</p>

1.6 Key Stakeholders



Key Findings from SAPS (SAPS - Small Area Population Statistics)



1.6.1 SAPS Area Overview: Age, Population, Houses, Access to Broadband

Location	Under 15	15 - 19	20 - 64	65+	Population	Houses	Access to Broadband
within 5km	755	281	1838	554	3428	1128	862
within 10km	5120	1608	13846	3158	23732	8539	6621

1.6.2 SAPS Area Overview: Pobal HP Deprivation Indices



1.6.3 SAPS Area Overview: Pobal HP Deprivation Indices*

Location	Employed	Further Education	Unemployed	Retired	Other
within 5km	1434	341	91	488	1074
within 10km	10068	2177	1046	2738	7703

*The Pobal HP Deprivation Index uses data from Census 2022, analysing ten measures of an area's levels of disadvantage.

1.6.4 SAPS Area Overview: Social Class

Location	Professional / Management	Skilled / Non-manual	Semi-skilled / Unskilled
within 5km	1398	1188	539
within 10km	8703	7083	3669

1.6.5 Community Champions: Overview

Location	#	Paid Staff	Participants
within 5km	4	1	2
6 - 10km	51	32	21
11 - 15km	50	24	26
16 - 20km	20	5	11
20+	13	8	9
Total	138	70	69

CE, TÚS, RSS Community Employment Scheme

1.6.6 Community Champions: Type of Organisation

Location	Individual	Sporting	Registered Charity / Social Enterprise	Other Voluntary or Community Organisation	Primary / Secondary School
within 5km	0	2	1	0	1
6 - 10km	1	8	19	15	8
11 - 15km	2	12	3	28	5
16 - 20km	1	6	3	7	3
20+	0	5	4	3	1
Total	4	33	30	53	18



Picture 1: Attendees at event in Ballybofey

LENALEA WIND FARM

CONSULTATION EVENTS NOVEMBER 2022

SSE Renewables and FuturEnergy Ireland co-developers of Lenalea Wind Farm, Co Donegal are holding two consultation events to inform the local community about the associated community benefit fund.

This event will provide an overview of the community benefit fund, inform community members of the opportunities and gather feedback from the community as to what the needs and priorities are in the surrounding area.

Donegal Local Development Company will support SSE Renewables and FuturEnergy Ireland at the events and will work alongside the community to establish the Lenalea Community Benefit Fund.

23rd November 2022
4pm-8pm
Clanree Hotel, Letterkenny,
Co Donegal

24th November 2022
4pm-8pm
Jacksons Hotel, Ballybofey,
Co Donegal

Tuilleadh Eolais / For further information please email
communityfundireland@sse.com

SSE Renewables
10,000 followers

Public consultation events for the Community Fund associated with Lenalea Wind Farm will take place on Wednesday 23rd November at Clanree Hotel, Letterkenny from 4pm-8pm and on Thursday 24th November at Jacksons Hotel, Ballybofey from 4pm-8pm.

If you would like to learn more about the fund, our dedicated team will be on hand to answer your questions and provide an overview of what the fund can bring to your community.

<https://told.ie/27D7YF>

#communityfundireland #toldireland #climateaction #renewables

Public consultation events

2.1 Calendar of Events

Date	Event Type	Location	Time	Venue	# people
Wednesday 23rd November '22	Consultation Event - Drop-in	Letterkenny	4pm to 8.00pm	Clanree Hotel, Letterkenny, Co Donegal	16
Thursday 24th November '22	Consultation Event - Drop-in	Ballybofey	4pm to 8.00pm	Jacksons Hotel, Ballybofey, Co Donegal.	27
Monday 6th March '23	Youth Forum	Stranorlar	11.00 am to 1.00pm	St Columbas College, Drumboe Avenue, Stranorlar, Donegal	26
Tuesday 7th March '23	Youth Forum	Raphoe	11.00am to 1.00pm	Royal and Prior Comprehensive School, Raphoe.	32

2.2 Drop-in Sessions - Advertising Activities

Activity Location	Type of Activity
Donegal Peoples Press	Newspaper Advert
Irish Times	Newspaper Advert
Donegal News	Newspaper Advert
SSE Renewables Donegal Mailing list	Email
Social Media	Paid LinkedIn Campaign
Community Champions	Email inviting organisations to register to be kept informed

2.3 Overview of Drop-in Sessions

Community information events were held in various locations around Lenalea Wind Farm. These drop-in sessions focused on the proposed Community Benefit Fund and also gave updates on the progress of the project.

Community Representatives from SSE Renewables and FuturEnergy Ireland were in attendance to answer any questions or queries that may have arisen. Attendees were able to review the pop up stands at their leisure and a takeaway brochure was available.

Once attendees had reviewed all the project information and discussed any questions or concerns with the project team, they were invited by Donegal Local Development Company to complete a needs assessment survey and put forward any proposed actions for their local area that they felt should be included in the funding strategy. In doing so they were asked to consider the following:

- What are your community's challenges/issues and threats?
- What are your community's resources/assets and opportunities?
- What actions should be prioritised for support in your community?
- Are the resources in your local area helping to meet the UN Sustainable Development Goals?

ABOUT SSE RENEWABLES

SSE Renewables is Ireland's leading developer, owner and operator of onshore wind farms with a vision to make renewable energy the foundation of a zero carbon world. The renewable electricity generated at wind farms operated by SSE Renewables across Ireland powers SSE Airtricity, Ireland's largest provider of 100% green energy. The company's onshore wind portfolio includes the 86MW Meentycall wind farm in Donegal and Ireland's largest wind farm, the 174MW Galway Wind Park.

ABOUT FUTUREENERGY IRELAND

FuturEnergy Ireland is a joint venture company owned on a 50:50 basis by Colliette and ESB that is actively looking to drive Ireland's transition to a low carbon economy. The company's ambition is to develop more than 1GW of renewable energy capacity by 2030 and make a significant contribution to Ireland's commitment to produce 80% of electricity from renewable sources by the end of the decade.



Picture 2: Attendees at event in Ballybofey

2.4 Lenalea Wind Farm Community Benefit Fund Committee

Attendees to the drop-in sessions were subsequently invited to complete an application form to become a Community Benefit Fund Committee Representative, 9 applied and 8 were appointed. Unfortunately, the person not appointed resided over 20km from the wind farm which is outside the designated boundary for the fund.

The Community Benefit Fund Committee is made up of local champions who will be the decision-making body for the fund. The Fund Committee comprises:

- Volunteer Community Representatives as the decision-making body.
- Representatives for the Developer (Lenalea Wind Farm DAC). Developer representatives will sit on the committee but do not influence the decision-making progress.

The committee is responsible for reviewing applications and making funding awards.

Following the induction of the committee, and on review of the Inclusive and Representative criteria outlined below, it was proposed to recruit additional members to ensure the committee would represent the widest cross-section of the community as possible. A further three committee members were appointed, bringing the committee to 11 members of the community, as well as a representative from DLDC and a representative from SSE Renewables and a representative of FuturEnergy Ireland.

2.4.1 Inclusive and Representative Committee

Gender Balance:	Geographical Balance:	Age Balance:
≥ 40% female members	≥ 1 North, ≥ 1 South, ≥ 1 East, ≥ 1 West,	≥ 1 18 - 30 years of age
≥ 40% male members	≥ 2 within 5km, ≥ 2 within 6-10km, ≥ 1 outside 10-15km	≥ 1 31 - 45 years of age
	≥ 1 Gaeltacht representative	≥ 1 46+ years of age

2.4.2 Declaration of Interests

On appointment, members were inducted to the committee and have committed to be guided by the following:

- Terms of reference
- Anti bribery policy
- Lobbying / canvassing policies
- Conflict of interest policy
- Safety guidance

2.4.3 Term of Membership

The Community Benefit Fund Committee membership will operate on a three-year cycle. This means that after three years, there will be a new call for applications.

**EOI TO JOIN THE
LENALEA COMMUNITY BENEFIT FUND COMMITTEE**

Lenalea is a 7 turbine 30.5 MW consented windfarm located outside Stranorlar, County Donegal. In 2020 Lenalea received the green light for development after it won a contract for low carbon power in Ireland's first competitive Renewable Energy Support Scheme (RESS) auction for onshore wind. It is estimated the fund is will be approximately €150,000 per annum but is dependent on the wind farm performance.

As part of RESS there is the requirement to establish a Fund Committee which will be the decision-making body of the Fund. The committee will be made up of voluntary community representatives and will have the ultimate responsibility for the fund strategy delivery.

The Fund Committee will consist of a number of volunteer community representatives, the project Developer and the Administrator. While Fund Committee sizes may vary, it is envisaged that a Fund Committee would not be smaller than 5 persons, including the Developer and Administrator, nor bigger than 14. All involved must work together to ensure the best outcomes for the community.

Name:

Email:

Mobile Phone Number:

Acting on behalf of:
(Individual, Community Group, Agency etc)

Role / Job Title:

Type of group:

How long have you been involved in Community Development?

Do you have a qualification in Community Development?

Background experience you feel is relevant to the Fund Committee:

I understand that Terms of Reference will be developed in relation to this committee and a Conflict of Interest Policy will be implemented. Conflicts of interest will be a standing agenda item at meetings and declarations of interests in applications being discussed will be recorded in the minutes. Members may not be present or participate in decisions regarding any application in which they have a direct interest.

Signed:

Date:

Community Benefit Fund Committee
Induction Meeting Dec 23

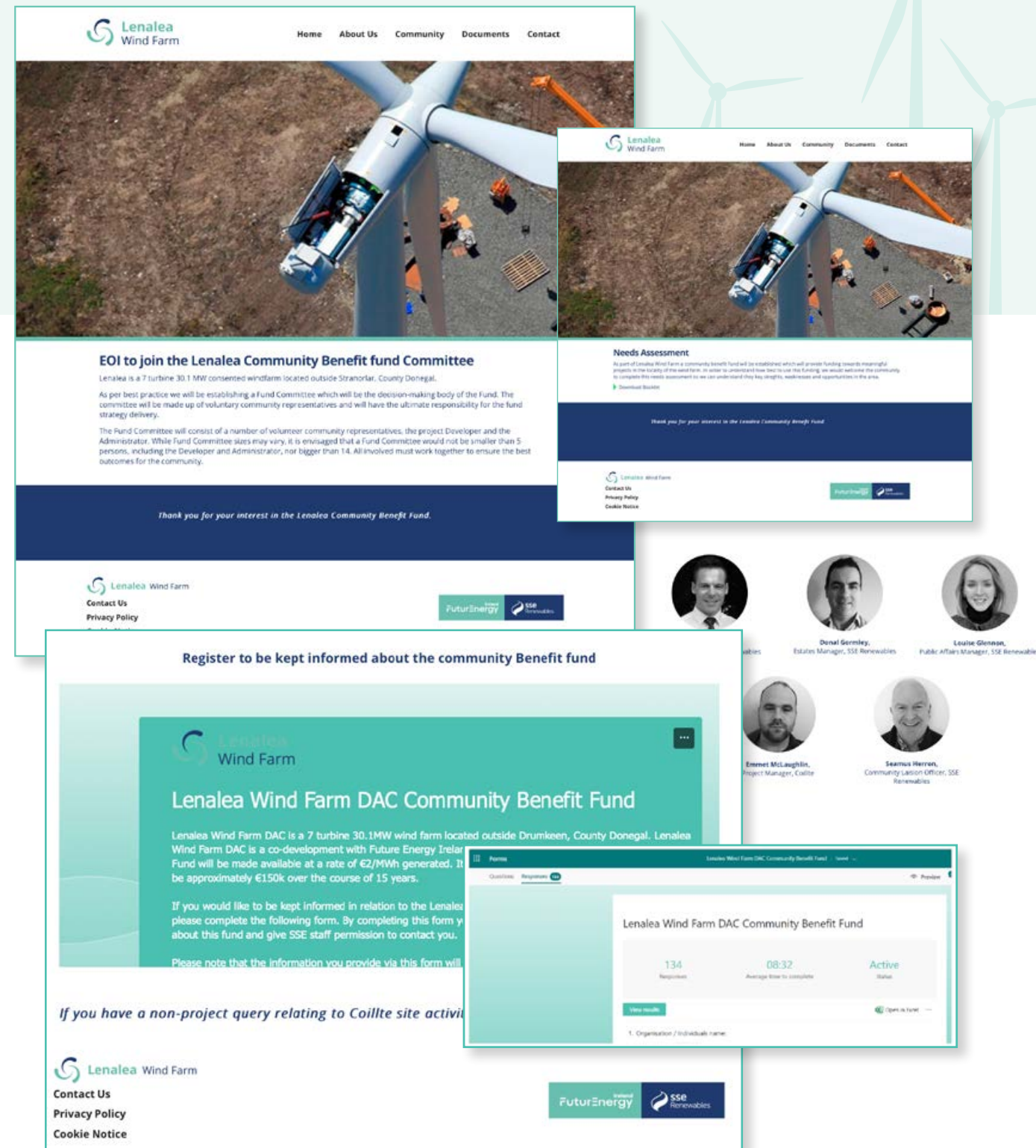
Agenda

17:00 - 17:05	Welcome - Introductions
17:05 - 17:10	Committee Induction Items
17:10 - 17:25	Safety
17:25 - 17:40	Anti Bribery / Lobbying Policy
17:40 - 17:45	UN SDGs & Social Economy
17:45 - 17:50	Additional TCRs
17:50 - 17:55	Election of Rules
17:55 - 18:00	Agree Standing Monthly Meeting Day, Week & Time
	AOB
	Bio & Photos outstanding

2.5 Lenalea Wind Farm Website

In addition to in person events, all information was made available to those that were unable to attend the consultation events. This included the needs assessment and expression of interest in joining the committee.

These forms were available on the Lenalea Wind Farm website. www.lenaleawindfarm.com Alternatively, interested people could contact the SSE Renewables Community Investment Team for more information and to have the information sent to them.



2.6 Overview of Youth Forums

In order to ensure all members of the community are represented we undertook youth forum discussions at two local schools, with the purpose of gaining an insight into the views of the younger members of the community.



2.6.1 Group Exercise 1

To give the younger members of the community the opportunity to consider the key strengths and opportunities in the area we invited the students to reflect on the below statements and outline what they believe to be:



- The **Strengths** in your area:
(i.e., what is unique, plentiful, or local asset / resource?)
- The **Weaknesses** in your area:
(i.e., what are the unmet needs? What is lacking, what hinders progress, problems and issues?)
- The **Opportunities** in your area:
(i.e., what could be done to improve the quality of life or help develop your community?)
- The **Threats** in your area:
(i.e., what external factors threaten it?)

2.6.2 Group Exercise 2

For the second group exercise, students were informed that the funding criteria of the community benefit fund would align with the UN Sustainable Development Goals (UN SDGs). Thinking about the below six UN SDGs, in their groups, students were asked to consider / brainstorm any issues or pressures felt by their community with respect to the following SDGs:

These forms were available on the Lenalea Wind Farm website. www.lenaleawindfarm.com
Alternatively, interested people could contact the SSE Renewables Community Investment Team for more information and to have the information sent to them.

- **UN SDG 3.** Good Health and Well - Being
(Ensure healthy lives and promote well-being for all at all ages) Point to consider - health care, covid, drugs and alcohol abuse.
- **UN SDG 4.** Quality Education
(Ensure inclusive and equitable quality education and promote lifelong learning opportunities for all)
- **UN SDG 7.** Affordable & Clean Energy
(Ensure access to affordable, reliable, sustainable and modern energy for all)
- **UN SDG 8.** Decent work and Economic growth?
(Promote sustained, inclusive and sustainable economic growth, full and productive employment and decent work for all)
- **UN SDG 11.** Sustainable Cities & Communities
(Make cities and human settlements inclusive, safe, resilient and sustainable) think about affordable housing, public transport and basic services.
- **UN SDG 13.** Climate Action
(Take urgent action to combat climate change and its impacts.)

2.6.3 Group Exercise 3

The entire group of students discussed the volume of similar topics that were identified and were invited to brainstorm any suggestions for projects that would address these issues / pressures.



3.1 Overview of Needs Assessment

When answering the needs assessment survey, the community were asked to consider and highlight what strengths, weaknesses, and opportunities exist in the area whilst considering members of the community including but not limited to: -

-
- A collage of four photographs illustrating the human life cycle. The top-left photo shows a young boy with curly hair smiling. The top-right photo shows a woman holding a baby, with a young child sitting next to her. The bottom-left photo shows a young man and woman sitting together. The bottom-right photo shows an elderly man and woman sitting on a bench, looking at something in the man's hands.

- Outdoor recreation
- Tourism
- Heritage and culture
- Community and recreational facilities
- Infrastructure
- Renewable energy
- Access to services
- Transport
- Housing
- Jobs
- Community health & safety

Having completed the Needs Assessment Survey as part of the community consultation process in December, the results of the Needs Assessment were correlated into a Qualitative and Quantitative Survey

The survey was also circulated to all Near Neighbours within a 2km radius of Lenalea wind farm and those living along the turbine delivery route by the local community liaison officer.

There was a 52% response rate receiving 73 responses in total. This equates to a total consultation time of 26 hours, with an average survey response time of 21 minutes.

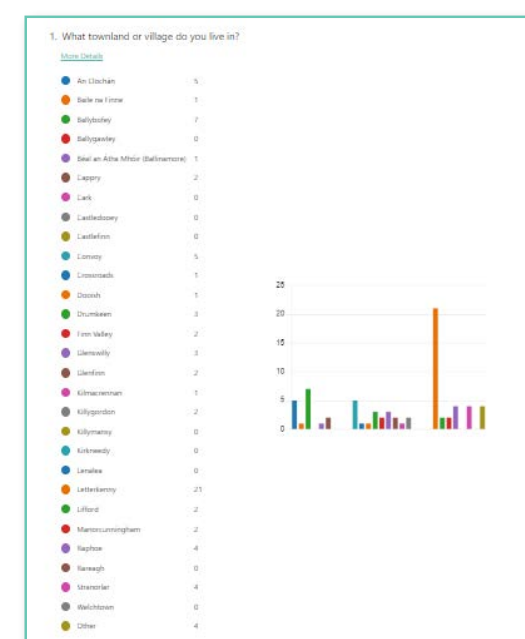
These responses give quality information about the level of support for the various ideas and suggestions which were put forward by the community, both locally and across the region. This information will help to design and shape the Funding Strategy.

Summary of results synopsis

The community consultation has brought to light several pivotal areas that require attention, first and foremost is the requirement for communities to become more energy-efficient and environmentally sustainable. This was closely followed by the need for education and training for young people which is essential for equipping the next generation with the skills and knowledge needed to thrive and to ensure that the younger generation stay within the region. Included within this theme would be the need for support with addiction for young people and their families. Similarly, services for the elderly must be enhanced to ensure a high quality of life for all age groups.

The Lenalea Community Benefit fund could be an enabler of the development of community facilities, such as community hubs, walkways, and greenways, this will not only foster social cohesion but also promote health and well-being. Moreover, the preservation of culture and heritage, alongside the promotion of biodiversity and environmental education along with a focus on the Irish language would be transformational within the communities that would benefit from the community fund.

A focus on multifunctional sustainable public spaces can serve as versatile venues for various community activities, catering to diverse needs and interests. Each of these elements plays a crucial role in building a resilient and dynamic community.



APPENDICES

4.1. Appendix 1-Key Findings per Townland

4.1.1 Ballybofey

Strengths	Weaknesses	Opportunities
Recreational Activities (swimming pool)	Derelict buildings	Greenways and information centre
Good community spirit	Not enough activities for teenagers	Tourism
Good variety of health and wellbeing facilities	Not enough cycle lanes	Summer programmes for teenagers
Good sports clubs	Public transport	Better public transport network
Hotels	Education opportunities	Employment opportunities to retain people
Tourism	Ageing population	

4.1.2 Cappry

Strengths	Weaknesses	Opportunities
Forestry	No funding for development	Greenways and information centre
Local Schools	Not enough cycling or running trails	Tourism - bike trails
Cappry Residents Group	Public transport	Better public transport network
Local Football Club	No EV chargers	

4.1.3 Castledooey

Strengths	Weaknesses	Opportunities
	Ageing population	Tourism

4.1.4 Castlefinn

Strengths	Weaknesses	Opportunities
Picturesque along river	Derelict buildings	More walkways
Good community spirit	Border town	
Historic village	Lack of footpaths	

4.1.5 Convoy

Strengths	Weaknesses	Opportunities
GAA Club	Lack of facilities for teenagers	Charging points for EV
Access to various walks	Public transport or amenities	Improve green tourism
Running facilities	No community hall	
Brownies & Scouts	No facilities or opportunities for the elderly	

4.1.6 Crossroads & Killygordon

Strengths	Weaknesses	Opportunities
Very engaged committee group and enterprise centre for investment	Lack of funding for capital costs	Skilled sustainable energy representatives to help with energy costs
Strong community spirit, good youth club facilities	Lack of facilities for teenagers	Better youth support

4.1.7 Drumkeen

Strengths	Weaknesses	Opportunities
Community Spirit	Lack of funding for facilities and equipment	Investment in facilities for younger people.

4.1.8 Finn Valley

Strengths	Weaknesses	Opportunities
Good sports facilities	High level of special needs and not enough facilities.	Development of a cycle friendly town
Good schools	Derelict buildings	High level of special needs
Good town plan	Local park upgrades	
Good community spirit	Poor tourism infrastructure	

4.1.9 Glenswilly

Strengths	Weaknesses	Opportunities
Community Spirit	Facilities for teenagers and a community hall for the elderly	Develop a community hub for all generations

4.1.10 Glenfinn

Strengths	Weaknesses	Opportunities
Good demographic representation across age groups	Lack of facilities for all generations	More information and awareness on sustainable energy opportunities
Good demographic representation across age groups	Ageing population	EV Charging points
Good community spirit	Poor Wi-Fi	
	Little employment opportunities	

4.1.11 Kilmacrennan

Strengths	Weaknesses	Opportunities
More support for those of refugee status.	Lack of community employment workers	More support for refugees

4.1.12 Letterkenny

Strengths	Weaknesses	Opportunities
Good population and access to services	Infrastructure	Outdoor recreation
Good Community Spirit	Lack of funding towards overheads and understanding	Infrastructure investment
		Tourism and development of heritage tourist attraction

4.1.13 Raphoe

Strengths	Weaknesses	Opportunities
Great community spirit	Cost of utility bills	More opportunities for young people and members of the travelling community
Courthouse is excellent facility but needs more funding	More educational opportunities	Tourism
Number of sports clubs	More personal development opportunities	

4.1.14 Stranorlar

Strengths	Weaknesses	Opportunities
Sports facilities	Employment & lack of tourism	Tourism promotion, assistance to groups to keep facilities modernised

4.2. Appendix 2-Results of Qualitative and Quantitative Survey

4.2.1 Number of responses per Townland

Townland	# Responses p/t	Total # Responses
Letterkenny		21
Ballybofey		7
An Clochán, Convoy	5 per townland	10
Raphoe, Stranorlar	4 per townland	8
Drumkeen, Glenswilly	3 per townland	6
Cappry, Finn Valley, Glenfinn, Killygordon, Lifford, Manorcunningham	2 per townland	12
Baile na Finne, Béal an Átha Mhóir (Ballinamore), Crossroads, Dooish, Kilmacrennan	1 per townland	5

4.2.2 Rank these topics in order of strength:

The topics ranked strongest were Social and Education with Tourism and Transport feature as the topics considered weakest in the area.

Order	Topic
1	Social: Community Spirit, Clubs, Services & Facilities
2	Education: Schools, skills courses
3	Natural Environment: Walk & Nature Trails, Woodlands & Forest, Nature & Wildlife, Beautiful Landscape, Rivers
4	Built Environment: Architectural heritage, Community Buildings, Facilities, General Area
5	Health & Wellness: Mental Health Services, outdoor recreational facilities
6	Tourism: Festivals and Events, Hotels, Tourist Accommodation and Facilities
7	Transport: Public Transport, commute time, connectivity

4.2.3 Built Environment:

Under the topic Built Environment the level of support for the various suggested measures are as follows;

Order	Measure	% Agree	% Neutral	% Disagree
1	Multipurpose indoor community facilities	87.7	9.6	2.7
2	Outdoor recreational spaces / facilities	82.2	16.4	1.4
3	Playground facilities	74	19.2	6.8
4	Community Energy generation	72.6	24.7	2.7
5	Energy efficiency retrofits	69.9	20.5	9.6
6	Repurpose Derelict buildings	67.1	23.3	9.6
7	Separate changing facilities to facilitate mixed sporting teams	60.3	31.5	8.2
8	Footpaths	54.8	20.5	24.7
9	Cycling lanes	52.1	27.4	20.5
10	Social housing development	48	26	26
11	Digital Hubs - co-working / remote working	46.6	35.6	17.8
12	Tourism Accommodation	38.4	35.6	26
13	Food, catering and hospitality facilities	28.8	45.2	26

4.2.4 Natural Environment:

Under the topic Natural Environment the level of support for the various suggested measures are as follows;

Order	Measure	% Agree	% Neutral	% Disagree
1	Walking paths & trails	74	20.5	5.5
2	Social Enterprise tourism projects	68.5	23.3	8.2
3	Cycle paths & trails	67.1	19.2	13.7
4	Festivals and Events	60.3	34.2	5.5
5	Litter control in recreation and tourism facilities	58.9	28.38	12.3
6	Green Tourism	52.1	39.7	8.2
7	Diversify farming	46.6	39.7	13.7

4.2.5 Tourism

Under the topic Tourism the level of support for the various suggested measures are as follows;

Order	Measure	% Agree	% Neutral	% Disagree
1	Outdoor recreational facilities	83.6	13.7	2.7
2	Walking paths	72.6	17.8	9.6
3	Social Enterprise tourism projects	64.4	31.5	4.1
4	Cycling paths	63	21.9	15.1

4.2.6 Social

Under the topic Social the level of support for the various suggested measures are as follows;

Order	Measure	% Agree	% Neutral	% Disagree
1	Services & Facilities for teenagers	93.2	6.8	0
2	Services & Facilities for children	91.8	8.2	0
3	Services & Facilities for elderly	91.8	8.2	0
4	Diversity of activities for children locally	84.9	13.7	1.4
5	Heritage projects	75.3	21.9	2.8
6	Mental Health Services	72.6	16.4	11
7	Festivals and Events	60.3	32.9	6.8
8	Medical services	60.3	17.8	21.9
9	Arts facilities; language	58.9	37	4.1
10	Arts facilities; culture	57.5	38.4	4.1
11	Childcare	57.5	31.5	11
12	Medical equipment	57.5	26	16.4
13	Social Housing	57.5	17.8	24.7
14	Arts facilities; music	54.8	41.1	4.1
15	Arts facilities; dance	50.7	43.8	5.5

4.2.7 Transport

Under the topic Transport the level of support for the various suggested measures are as follows;

Order	Measure	% Agree	% Neutral	% Disagree
1	Cycle friendly towns and villages	83.6	12.3	4.1
2	Community transport	72.6	15.1	12.3
3	Connectivity between towns and villages	69.9	23.3	6.8
4	Bicycle rental project	67.1	24.7	8.2
5	Electric bike rental project	58.9	31.5	9.6
6	Park and ride	54.8	32.9	12.3

4.2.8 Education

Under the topic Education the level of support for the various suggested measures are as follows;

Order	Measure	% Agree	% Neutral	% Disagree
1	Emerging Technologies	74	23.3	2.7
2	Reskilling for Adults	72.6	19.2	8.2
3	Facilities for Schools	65.8	21.9	12.3
4	Kits for Schools	63	26	11

4.2.9 UN SDG 3. Good Health and Well-being:

Under the topic UN SDG 3. Good Health and Well-being the level of support for the various suggested measures are as follows;

Order	Measure	% Agree	% Neutral	% Disagree
1	Local Defibrillators	89	9.6	1.4
2	Local Health Clinic	75.3	16.4	8.2
3	Support for homeless	75.3	17.8	6.8
4	Addiction Intervention	71.2	21.9	6.8
5	Campaigns to reduce Vaping and Smoking	71.2	15.1	13.7

4.2.10 Active Lifestyle; Programmes & Initiatives to encourage regular physical activity

Under the topic Active Lifestyle the level of support for the various suggested measures are as follows;

Order	Measure	% Agree	% Neutral	% Disagree
1	Outdoor recreational activities	90.4	6.8	2.8
2	Active community programmes	90.4	9.6	0
3	Active Ageing Wellness	89	9.6	1.4
4	All-weather outdoor recreational infrastructure	86.3	11	2.7
5	Indoor community fitness equipment	80.8	16.4	2.8
6	Active travel	71.2	26.1	2.7

4.2.11 Mental Health; Programmes & Initiatives

Under the topic Mental Health the level of support for the various suggested measures are as follows;

Order	Measure	% Agree	% Neutral	% Disagree
1	For Teenagers	91.8	6.8	1.4
2	For Women	91.8	6.8	1.4
3	For Men	90.4	8.2	1.4
4	For Children	84.9	12.3	2.8

4.2.12 UN SDG 4. Quality Education

Under the topic UN SDG 4. Quality Education the level of support for the various suggested measures are as follows;

Order	Measure	% Agree	% Neutral	% Disagree
1	Recreational and educational programmes for disadvantaged youths	87.6	11	1.4
2	Safe, access to sporting & recreation facilities for schools	84.9	15.1	0
3	Talks on Renewable Energy and Energy Efficiency	82.2	16.4	1.4
4	Talks on Biodiversity / Environment / Climate Action	72.6	26	1.4
5	Talks on Career Paths new technology / renewables / other	69.9	26	4.1

4.2.13 Children's Education; Kits and Equipment

Under the topic Children's Education the level of support for the various suggested measures are as follows;

Order	Measure	% Agree	% Neutral	% Disagree
1	Sports for community	80.8	19.2	0
2	Sports for schools	72.6	23.3	4.1
3	The Arts for community	72.6	26	1.4
4	STEM for schools	71.2	26	2.8
5	The Arts for schools	69.9	26	4.1
6	STEM for community	65.8	34.2	0

4.2.14 Adult Education; Courses and Skills

Under the topic Adult Education the level of support for the various suggested measures are as follows;

Order	Measure	% Agree	% Neutral	% Disagree
1	Social	74	24.7	1.4
2	Accredited	71.2	27.4	1.4
3	Scholarship Programme	71.2	26	2.8
4	Educational Bursaries	69.9	27.4	2.7
5	Reskilling to Green Technology	68.5	30.1	1.4

4.2.15 UN SDG 7. Affordable & Clean Energy

Under the topic UN SDG 7. Affordable & Clean Energy the level of support for the various suggested measures are as follows;

Order	Measure	% Agree	% Neutral	% Disagree
1	Solar PV Systems on community assets	90.4	6.8	2.7
2	Educational campaign / programmes in community facilities	86.3	12.3	1.4
3	Community renewable energy generation	86.3	12.3	1.4
4	Green Building Initiatives	83.6	15.1	1.4
5	Rechargeable equipment and tools	80.8	16.4	2.7
6	Educational campaign / programmes in schools	80.8	15.1	4.1

4.2.16 Public Infrastructure

Under the topic Public Infrastructure the level of support for the various suggested measures are as follows;

Order	Measure	% Agree	% Neutral	% Disagree
1	Solar PV and battery streetlights / floodlights	84.9	8.2	6.8
2	Energy Efficient LED lighting	84.9	9.6	5.5
3	EV Charging Points	79.5	15.1	5.5
4	Electric bike / scooter rental scheme	65.8	24.7	9.6
5	Electric commuter bus	65.8	24.7	9.6

4.2.17 UN SDG 8. Decent work and Economic growth

Under the topic UN SDG 8. Decent work and Economic growth the level of support for the various suggested measures are as follows;

Order	Measure	% Agree	% Neutral	% Disagree
1	Summer programmes for Teenagers	87.7	9.6	2.7
2	Apprenticeship programme	80.8	12.3	6.8
3	Reskilling programmes	80.8	13.7	5.5
4	Outside space for mental health and wellbeing	78.1	19.2	2.7
5	Additional childcare places to enable parents return to work	74	19.2	6.8
6	Support for staffing costs for social enterprises	74	17.8	8.2
7	Transitioning from high-carbon sector to working in the low-carbon sector	72.6	19.2	8.2
8	Inclusion and Diversity recruitment	68.5	26	5.5
9	Recruitment supports	64.4	30.1	5.5
10	Campaign to support Agriculture / farming	61.6	26	12.3
11	Jobs fair	53.4	37	9.6

4.2.18 Social Enterprises; Transport

Under the topic Social Enterprises: Transport the level of support for the various suggested measures are as follows;

Order	Measure	% Agree	% Neutral	% Disagree
1	EV Charging Points	76.7	19.2	4.1
2	Bike rental scheme	69.9	23.3	6.8
3	EV Bike rental scheme	68.5	21.9	9.6
4	Local EV Bus service	68.5	20.5	11

4.2.19 Social Enterprises; **Tourism**

Under the topic Social Enterprises: Tourism the level of support for the various suggested measures are as follows;

Order	Measure	% Agree	% Neutral	% Disagree
1	Outdoor recreation	80.8	12.3	6.8
2	Greenways	80.8	13.7	5.5
3	Support tourism opportunities	76.7	16.4	6.8
4	Information Centres / Points	74	17.8	8.2
5	Riverside tourism	68.5	21.9	9.6
6	Visitor Experiences	67.1	19.2	13.7
7	Water sports	63	23.3	13.7
8	Local tourist accommodation	60.3	27.4	12.3
9	Parking	58.9	26	15.1

4.2.20 Social Enterprises; **Food and Beverage**

Under the topic Social Enterprises: Food and Beverage the level of support for the various suggested measures are as follows;

Order	Measure	% Agree	% Neutral	% Disagree
1	Community café	78.1	16.4	5.5
2	Meals on Wheels	72.6	21.9	5.5
3	Catering services	57.5	34.2	8.2
4	Mobile Café	53.4	38.4	8.2

4.2.21 Social Enterprises; **Employment Generation**

Under the topic Social Enterprises: Employment Generation the level of support for the various suggested measures are as follows;

Order	Measure	% Agree	% Neutral	% Disagree
1	Business / Enterprise Campus / Co-working Hub	58.9	30.1	11
2	Investment in Creative Arts sector	58.9	35.6	5.5
3	Develop enterprise space in old Bord na Mona sites	56.2	31.5	12.3
4	Creation of a Digital Park	53.4	35.6	11

4.2.22 UN SDG 11. **Sustainable Cities & Communities**

Under the topic UN SDG 11. Sustainable Cities & Communities the level of support for the various suggested measures are as follows;

Order	Measure	% Agree	% Neutral	% Disagree
1	Sustainable community development planning	90.4	8.2	1.4
2	Sustainable Energy Community projects	87.7	9.6	2.7
3	Sustainability training	83.6	12.3	4.1
4	Educational campaign / programmes	78.1	20.5	1.4

4.2.23 Circular Economy and Recycling

Under the topic Circular Economy and Recycling the level of support for the various suggested measures are as follows;

Order	Measure	% Agree	% Neutral	% Disagree
1	Multi-purpose public bins - waste, recycling, composting	83.6	11	5.5
2	Repurposing facilities	82.2	13.7	4.1
3	Circular economy pilot projects	78.1	17.8	4.1
4	Sustainable product development	75.3	20.5	4.1
5	Educational Campaign on circular economy	74	21.9	4.1
6	GIY initiatives - polytunnels, aquaponics etc.	72.6	19.2	8.2

4.2.24 UN SDG 13. **Climate Action**

Under the topic UN SDG 13. Climate Action the level of support for the various suggested measures are as follows;

Order	Measure	% Agree	% Neutral	% Disagree
1	Campaigns / Initiatives / infrastructure that encourage sustainable transport - walking, cycling,	91.8	6.8	1.1
2	Educational campaign / programmes in schools and community facilities	79.5	19.2	1.4
3	River enhancement projects	74	23.3	2.7
4	Environmental monitoring	69.9	23.3	6.8
5	Construction - low carbon, green standards, eco-friendly practices	67.1	27.4	5.5
6	Climate resilience planning	67.1	26	6.8
7	Green Flags programme	63	31.5	5.5

4.2.25 Town and Village enhancement; **campaigns, initiatives and infrastructure**

Under the topic Town and Village enhancement the level of support for the various suggested measures are as follows;

Order	Measure	% Agree	% Neutral	% Disagree
1	Landscaping; planting, weeding, cutting, etc	82.2	12.3	5.5
2	Litter picking	82.2	11	6.8
3	Rainwater harvesting	79.5	11	9.6
4	Community allotments / gardens	78.1	16.4	5.5
5	Clear Air Strategy -reduce air pollution and promote cleaner ambient air	76.7	16.4	6.8

4.2.26 Reduce the volume of Plastic bottles

Under the topic Reduce the volume of Plastic bottles the level of support for the various suggested measures are as follows;

Order	Measure	% Agree	% Neutral	% Disagree
1	Plastic Bottle recycling facility	83.6	9.6	6.7
2	Reusable bottle / cup campaign	80.8	15.1	4.1
3	Drinking water fountains at recreational facilities	79.5	16.4	4.1
4	Drinking water fountains in schools	78.1	17.8	4.1
5	Public drinking water fountains	67.1	26	6.8
6	Fresh water supply at Harbour	63	28.8	8.2

4.2.27 Biodiversity; projects, initiatives and programmes

Under the topic Biodiversity the level of support for the various suggested measures are as follows;

Order	Measure	% Agree	% Neutral	% Disagree
1	Native Irish trees and plants	86.3	11	2.7
2	Wildlife & habitats restoration	84.9	11	4.1
3	Plants and Animals: Flora and Fauna	83.6	12.3	4.1
4	Clean water projects - aquatic life in streams and rivers	82.2	13.7	4.1
5	Green infrastructure - green roofs, permeable pavements, green walls etc.	80.8	16.4	2.7
6	Insects habitats; bug hotels, pollinator corridors etc.	79.5	17.8	2.7

4.2.28 UN SDG 15. Life on Land

Under the topic UN SDG 15. Life on Land the level of support for the various suggested measures are as follows;

Order	Measure	% Agree	% Neutral	% Disagree
1	Native planting	84.9	12.3	2.7
2	Develop areas of biodiversity within community grounds / facilities / tourism attractions	82.2	15.1	2.7
3	Parkland to restore Biodiversity and ecosystem	80.8	16.4	2.7
4	Initiatives to reducing / removing / replacing chemical, less pesticides etc.	79.5	17.8	2.7
5	Educational campaign / programmes in schools and community facilities	78.1	17.8	4.1
6	Education on land degradation and biodiversity loss	72.6	24.7	2.7
7	Rewetting the bog	63	32.9	4.1

4.2.29 Facilities / Assets Management; Compliance with Regulatory Requirements

Under the topic Facilities / Assets Management the level of support for the various suggested measures are as follows;

Order	Measure	% Agree	% Neutral	% Disagree
1	ICT - Information and Communications Technology	75.3	20.5	4.1
2	Emergency Lighting, Access & Egress	74	20.5	5.5
3	Health and Safety	72.6	23.3	4.1
4	Fire Safety	71.2	24.7	4.1
5	Statutory Checks; electrical etc	71.2	23.3	5.5
6	Maintenance	71.2	24.7	4.1
7	Food Hygiene	68.5	23.3	8.2

4.2.30 Workforce Capacity; Governance, Skills and Expertise

Under the topic Workforce Capacity the level of support for the various suggested measures are as follows;

Order	Measure	% Agree	% Neutral	% Disagree
1	Community Action Planning	80.8	13.7	5.5
2	Training and upskilling costs	79.5	16.4	4.1
3	Project development costs	76.7	20.5	2.7
4	Volunteering programme development	76.7	20.5	2.7
5	Social Economy model development	75.3	16.4	8.2
6	Governance training and facilitation	67.1	27.4	5.5
7	Procedures Manuals	64.4	27.4	8.2
8	Additional salary costs	53.4	38.4	8.2

4.2.31 Financial Sustainability; Innovation and self-sustainability

Under the topic Financial Sustainability the level of support for the various suggested measures are as follows;

Order	Measure	% Agree	% Neutral	% Disagree
1	Multi-annual funding	86.3	11	2.7
2	Renewable Energy Generation	86.3	11	2.7
3	Social enterprise projects	82.2	17.8	0
4	Energy Efficiency upgrades	82.2	13.7	4.1
5	Retrofit upgrades	80.8	15.1	4.1
6	Seed Funding	76.7	19.2	4.1
7	Pilot Social Economy Programmes	74	23.3	2.7
8	Promotion & Marketing costs	68.5	24.7	6.8
9	Social Network membership fees	57.5	32.9	9.6

The logo consists of a stylized circular emblem with two curved, overlapping shapes in white and dark blue, resembling a swirl or a stylized 'S'.

Lenalea Wind Farm

If you would like any further information about Lenalea Wind Farm please contact the Community Liaison Officer Seamus Herron on seamus.herron@sse.com or alternatively clo@sse.com

If you would like to be kept informed about any updates in relation to the **Community Benefit Fund** you can sign up [here](#).

