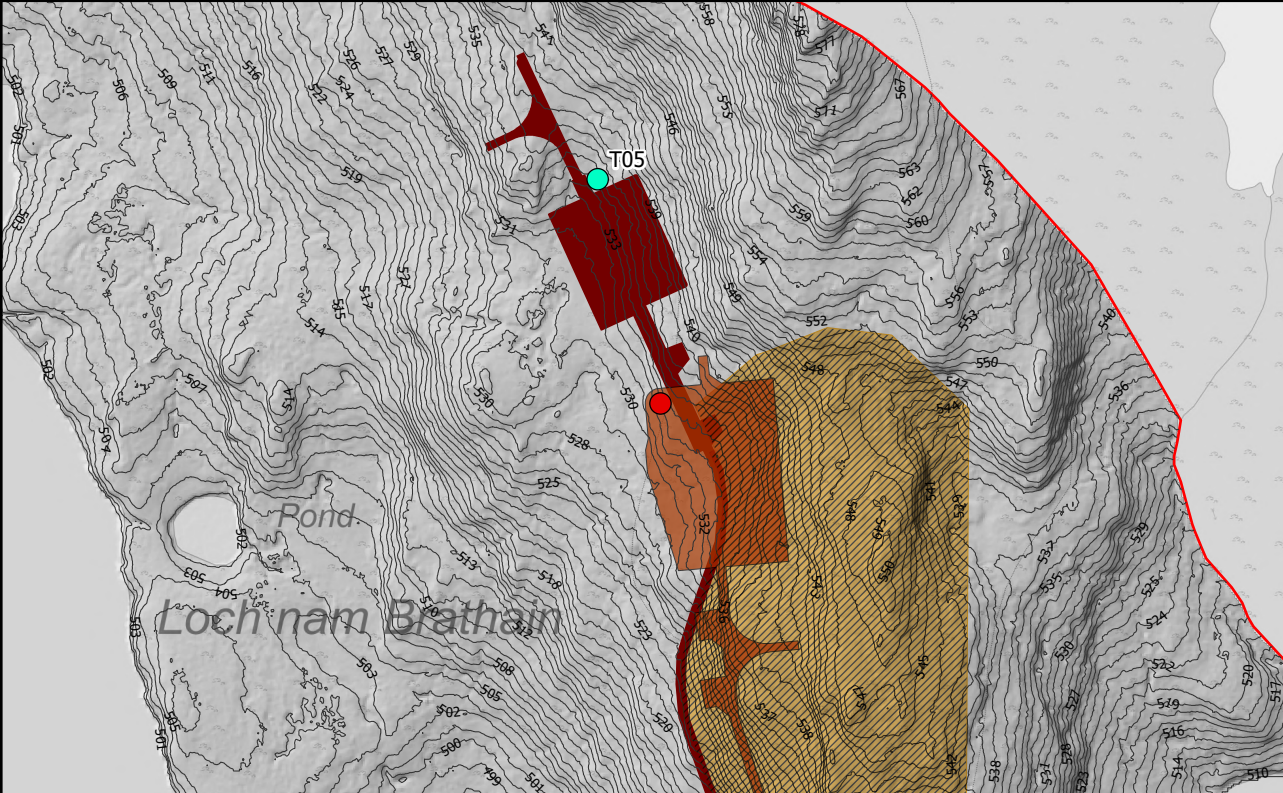
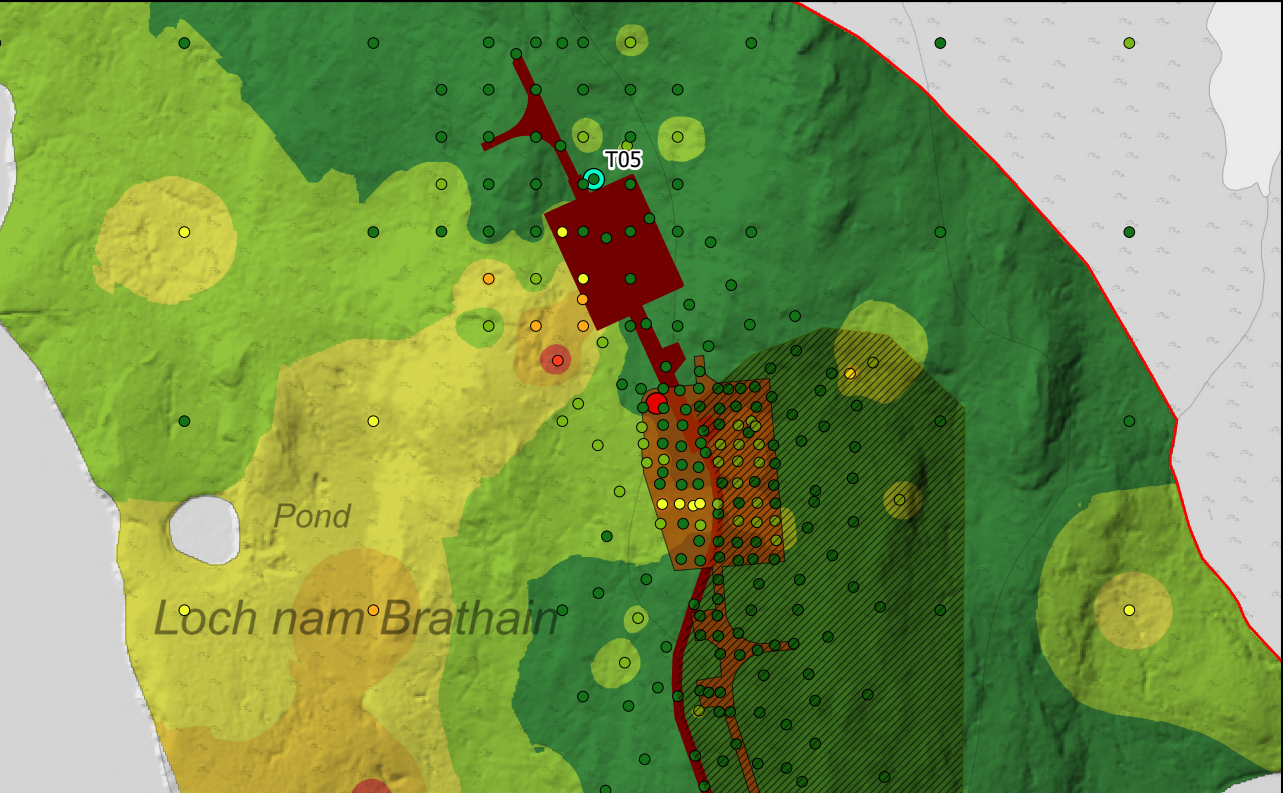


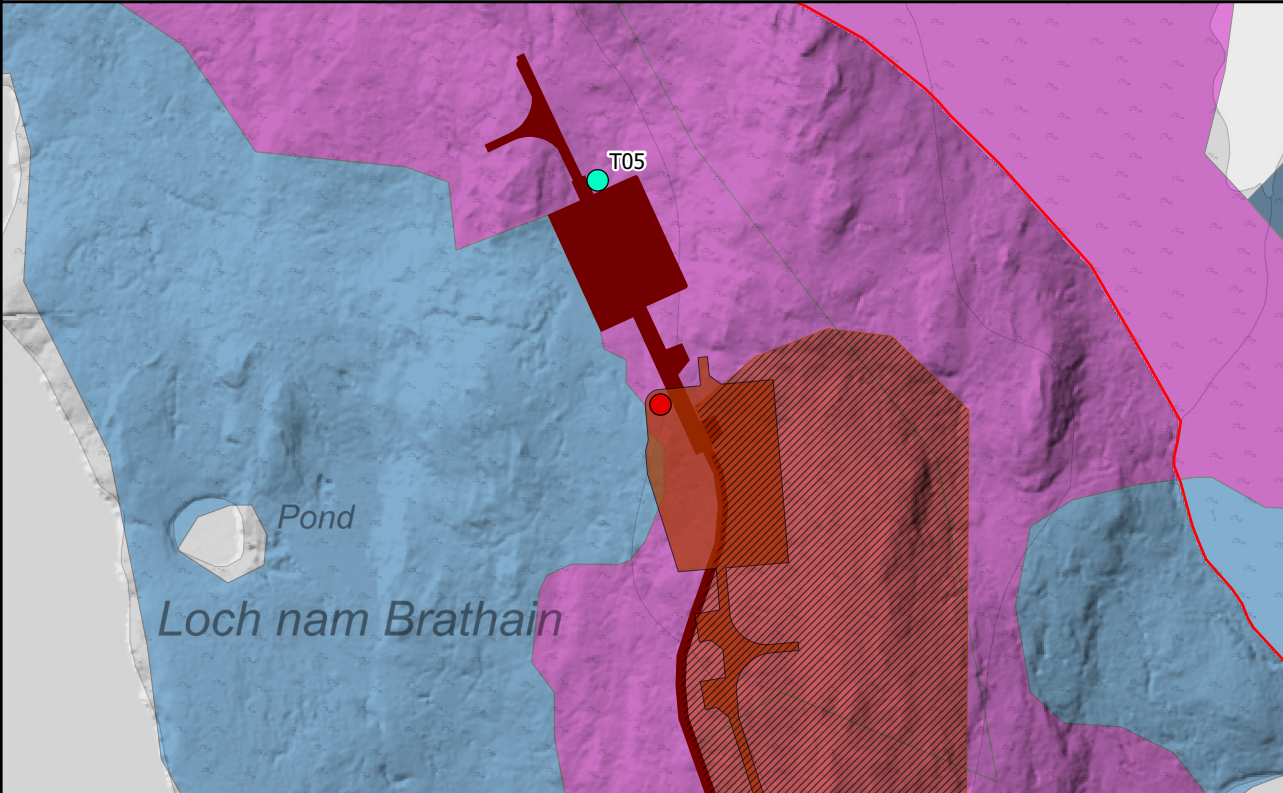
**T05: Reason for Moving:** The location has been moved to minimize the impact on areas of deeper peat introduced by the larger hardstand required for the turbines. The new location is in areas of shallow peat. This turbine location was selected following a Landscape and Visual assessment by consultant (ASH). This position has a lower impact to that of the original position that was proposed.



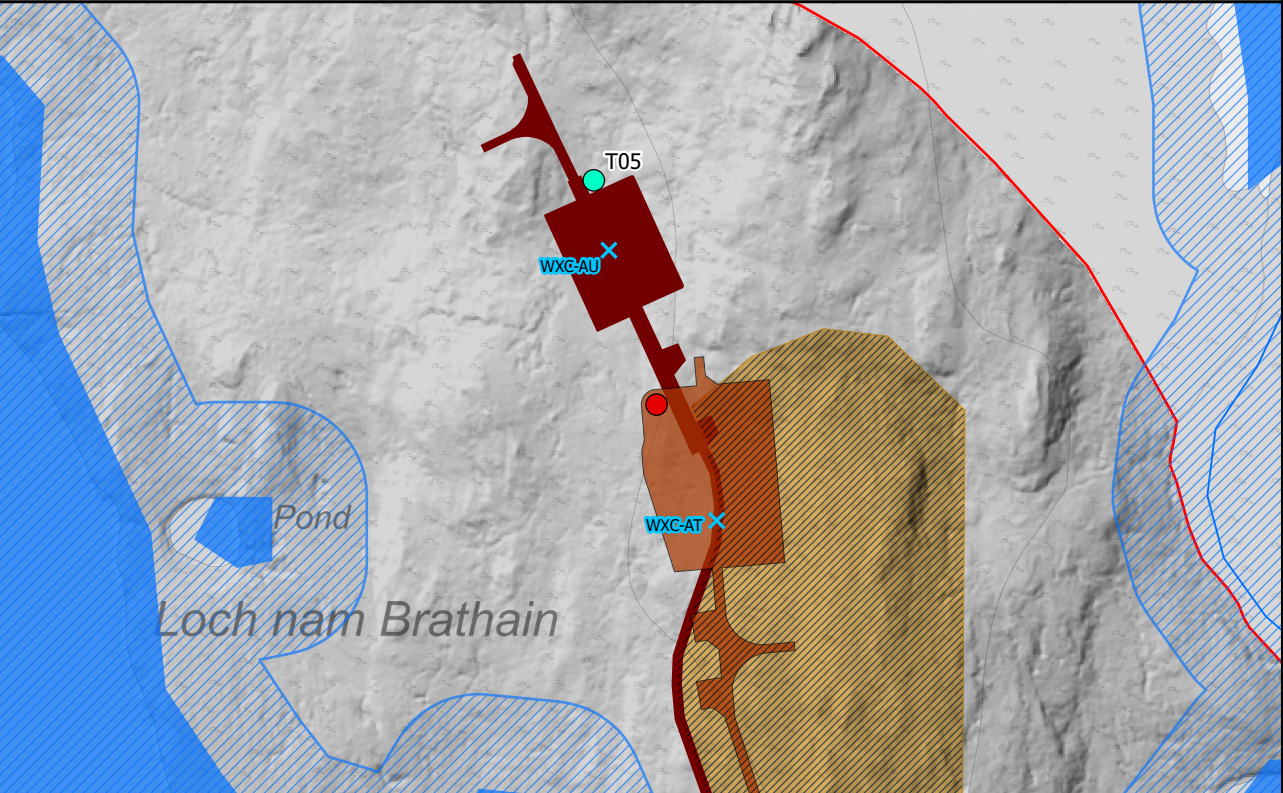
**Engineering:** The new arrangement reduces the length of the access track significantly. The Turning Head has been moved to adjacent the proposed crane pads, further reducing disturbance. The new position avoids the steepest slopes adjacent to the East of the Consented location.



**Geology Impacts:** The larger hardstand would have required building on the deep peat area to the west. By moving the turbine south, the infrastructure can be built in areas of mainly shallow peat. The move of the hardstand to the south, locates most of the infrastructure out of peat compartment "9". The proposed infrastructure is within the current consented 50m micrositeing buffer.



**Ecology Impacts:** The consented turbine location with the required hardstand is partially within M17b., M17/M17a/ M18a/M19a). The proposed revised turbine location and hardstand reduces the amount of infringement on this habitat and the majority of the proposed infrastructure is now in Wet heath(M15c) and some Blanket Mire (M17/M17a/M18a/ M19a).



**Hydrology Impacts:** The proposed location is outside the 50m water buffers. One less water crossing required.

**Legend**

- Site Boundary
- Consented Turbine Location
- Proposed Varied Turbine Location
- Proposed Varied Development Layout
- Consented Development Layout
- No Change to Consented Development
- Consented Borrow Pit Excluded From Proposed Varied Development

**Engineering**

1m Contour

**Geology**

**Peat Depth (m)**

- 0 - 0.5
- 0.5 - 1
- 1 - 1.5
- 1.5 - 2
- > 2
- 0 - 0.5
- 0.5 - 1
- 1 - 1.5
- 1.5 - 2
- > 2
- Potential Peatland Restoration Areas

**Ecology**

**NVC**

- M15c
- M17/M17a/M18a/M19a
- M19a

**Hydrology**

- Consented Water Crossing
- Revised Water Crossings
- Watercourses (Based on OS 50k)
- Waterbodies (Based on OS 50k)
- 50m Water Buffer (Based on OS 50k)

Scale 1:4,000 @ A3

0 80 m



**Figure 2.1e**  
**Infrastructure Design Review**  
**- Turbine 05**

**Bhlaraidh Wind Farm Extension**  
**S36C Varied Development**