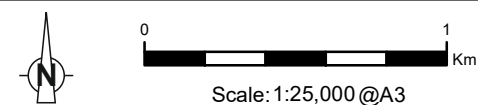


Grid Ref: 247391 900319 Distance to development: 6.5km AOD: 39.4m



This VP is located on the minor road between Inveroykel and Culrain. Taking the junction leading south, across a bailey bridge located approximately 1km to the west of Rosehall village on the A837, turn sharply left, at the top of this road. Continue for a further 1.75km. The viewpoint is located at a large forest entrance.

FIGURE V3b-11.1
VIEWPOINT 16 - Minor Road at Inveroykel Forest Access



Tripod Photo