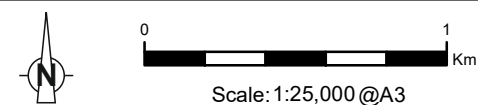


Grid Ref: 218283 823945 Distance to development: 20.0km AOD: 428.8m



Travel to Cannich on the A831. At the north-western end of Cannich, turn left onto the minor road signposted for Glen Affric, Tomich and Fasnakyle. Follow this road for approximately 17km on the northern side of Loch Beinn a' Mheadhoin until you reach the River Affric Car Park. From here, continue on foot along the northern side of Loch Affric for around 1.5km, then turn right onto a smaller track just before Affric Lodge. Follow this track for another 1.5km until you reach the viewpoint.

FIGURE V3b-13.1
VIEWPOINT 20 - Path north of Affric Lodge



Tripod Photo