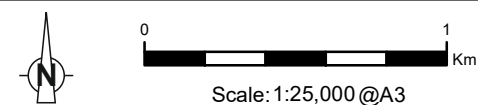


Grid Ref: 247028 902032 Distance to development: 4.7km AOD: 16.6m



From Invercassley Tea Rooms (formerly Invercassley Stores) in Rosehall village, walk approximately 50m south along the verge of the A837. The VP is located at the entrance to the drive of a house on the east side of the road.

FIGURE V3b-4.1
VIEWPOINT 6 - Rosehall



Tripod Photo