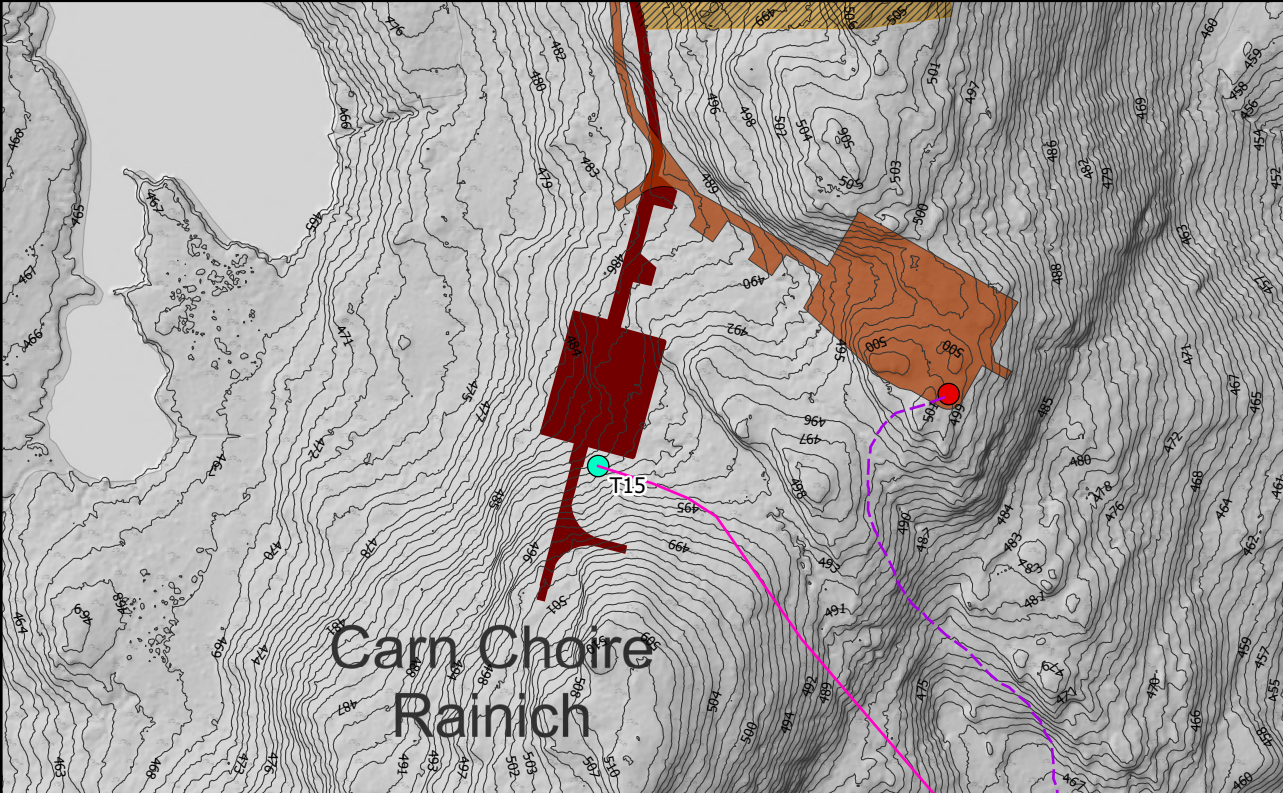
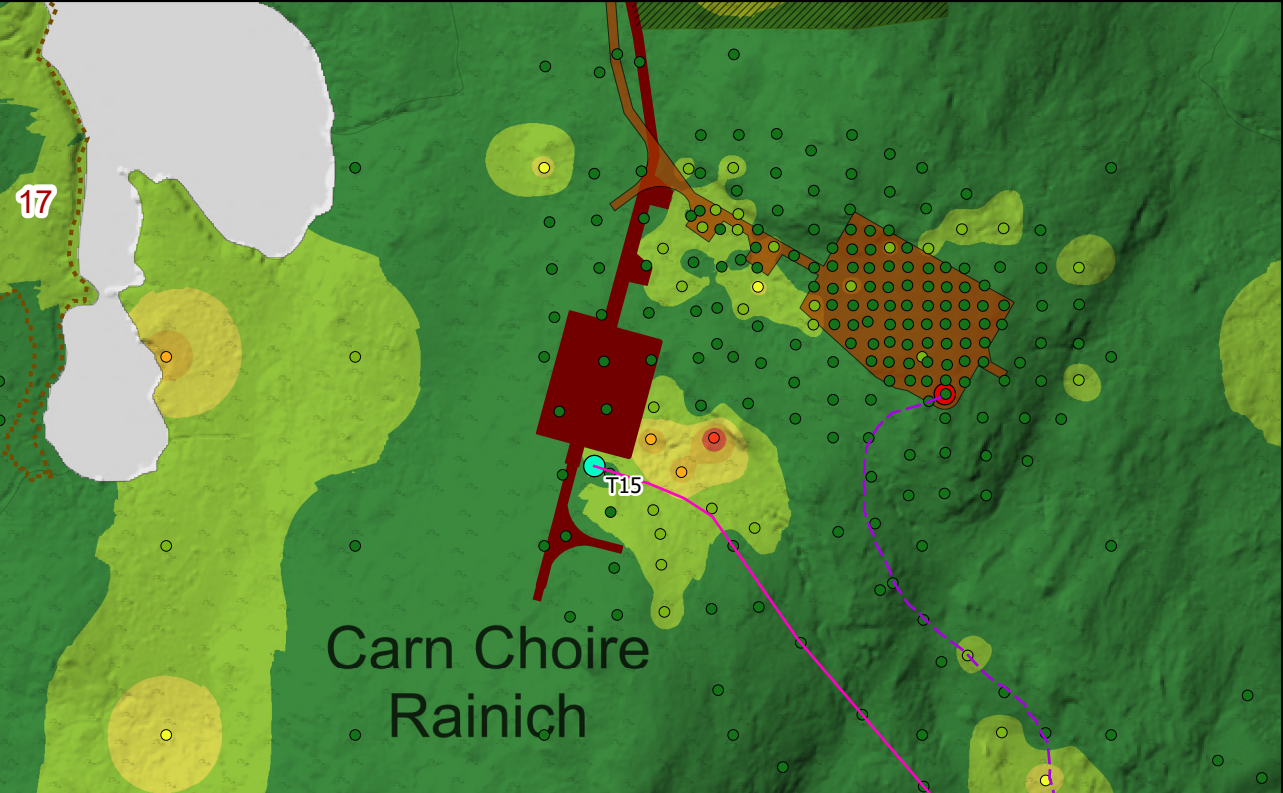


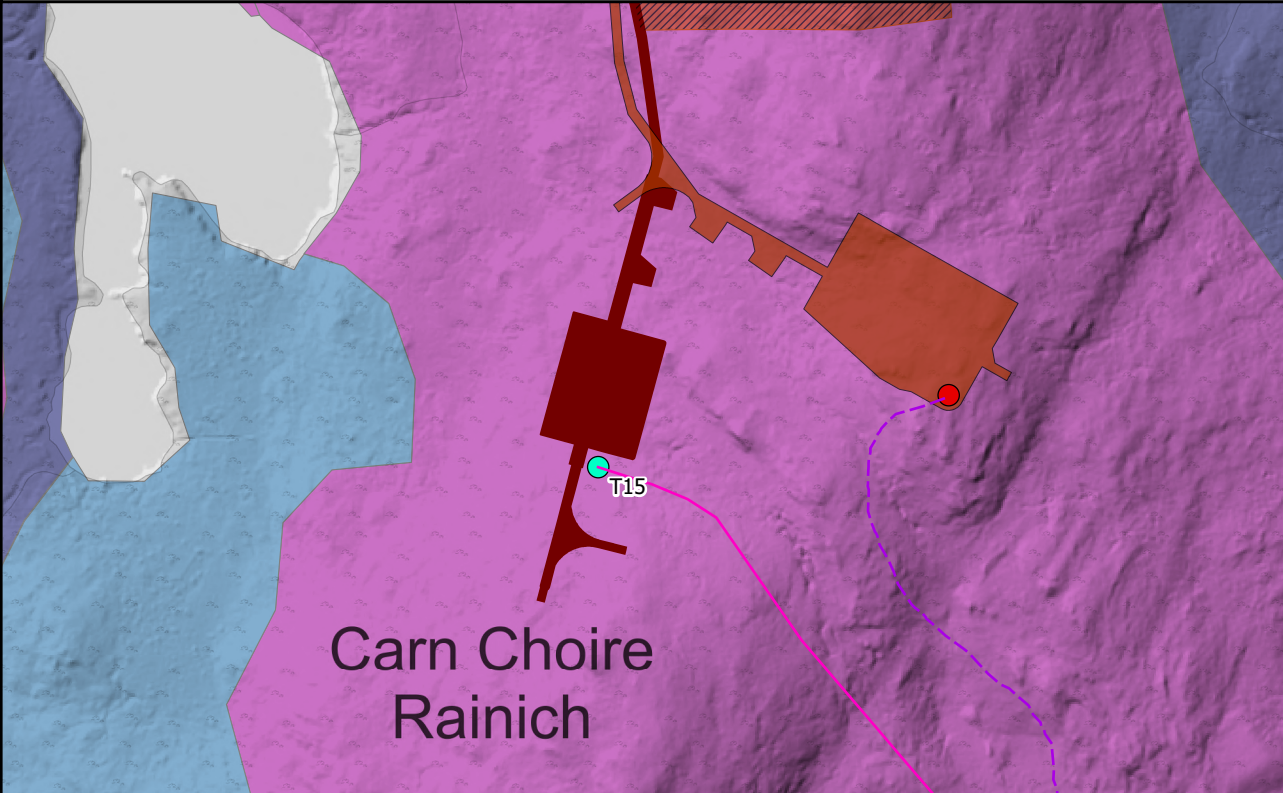
**T15: Reason for Moving:** The move is necessary to increase turbine spacing to more than three times the rotor diameter from its closest neighbouring turbine. This adjustment was needed because T10 had to be moved east due to safety concerns regarding the toppling distance to the substation platform. Increasing the spacing reduces the impact of wake-related losses, which occur when turbines are too close to each other.



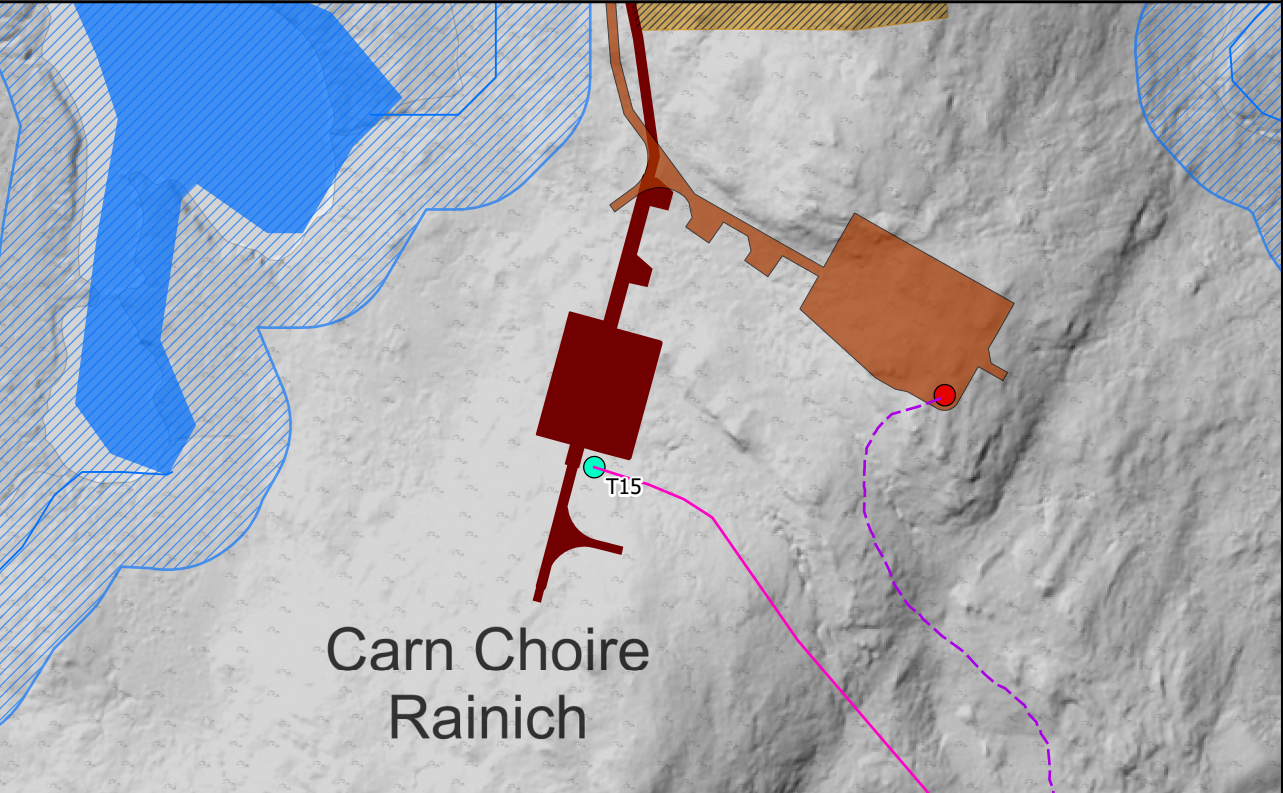
**Engineering:** The alignment of the access track has been primarily maintained, with only the hardstand / turbine being substantially relocated to avoid a local valley with deeper peat in the area East of the Consented position



**Geology Impacts:** Both the consented and proposed infrastructure locations are situated in areas of shallow and medium depth peat. If the consented turbine location was to be maintained with the required hardstanding, areas of deep peat would be impacted. The cross country cable cross route still to be determined and may need to exceed a 50m micrositing zone shown as noted in the current planning documentation.



**Ecology Impacts:** As with the current consented infrastructure, the new layout is entirely within Wet Heath (M15c).



**Hydrology Impacts:** The proposed location is outside the 50m water buffers. Although not shown as water courses on the map, it was noticed that there are channels within the landscape that were likely to carry water, these areas have been avoided which has resulted in the turbine location being further east than strictly necessary to satisfy other design drivers.

### Legend

- Site Boundary
- Consented Turbine Location
- Proposed Varied Turbine Location
- Consented Indicative Cross Country Cable Route
- Proposed Varied Indicative Cross Country Cable Route Alignment
- Proposed Varied Development Layout
- Consented Development Layout
- No Change to Consented Development
- Consented Borrow Pit Excluded From Proposed Varied Development

### Engineering

1m Contour

### Geology

Peat Depth (m)

- 0 - 0.5
- 0.5 - 1
- 1 - 1.5
- 1.5 - 2
- > 2

0 - 0.5

0.5 - 1

1 - 1.5

1.5 - 2

> 2

Potential Peatland Restoration Areas

### Ecology

NVC

- H9e
- M15c
- M17/M17a/M18a/M19a

### Hydrology

- Consented Water Crossing
- Revised Water Crossings
- Watercourses (Based on OS 50k)
- Waterbodies (Based on OS 50k)
- 50m Water Buffer (Based on OS 50k)

Scale 1:4,000 @ A3

0 80 m

N

**Figure 2.1m**

**Infrastructure Design Review**

**- Turbine 15**

**Bhlaraidh Wind Farm Extension**

**S36C Varied Development**