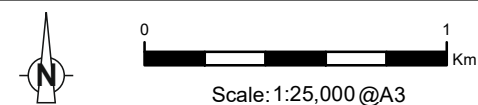


Grid Ref: 235061 818397 Distance to development: 4.1km AOD: 339.1m



About 4.5km west of Invermoriston, turn off the A887 road at Bhlàraidh properties. Seek permission before accessing this private road. The viewpoint is accessed by travelling along the main track for approximately 1.9km (ignoring the east turn after 450m) and taking the left-hand, westwards branch where the track divides. Continue along past Bhlàraidh Reservoir, where the viewpoint is located on the track, around 300m beyond the reservoir, to the west.

FIGURE V3b-1.1
VIEWPOINT 1 - Track to Loch Liath



Tripod Photo