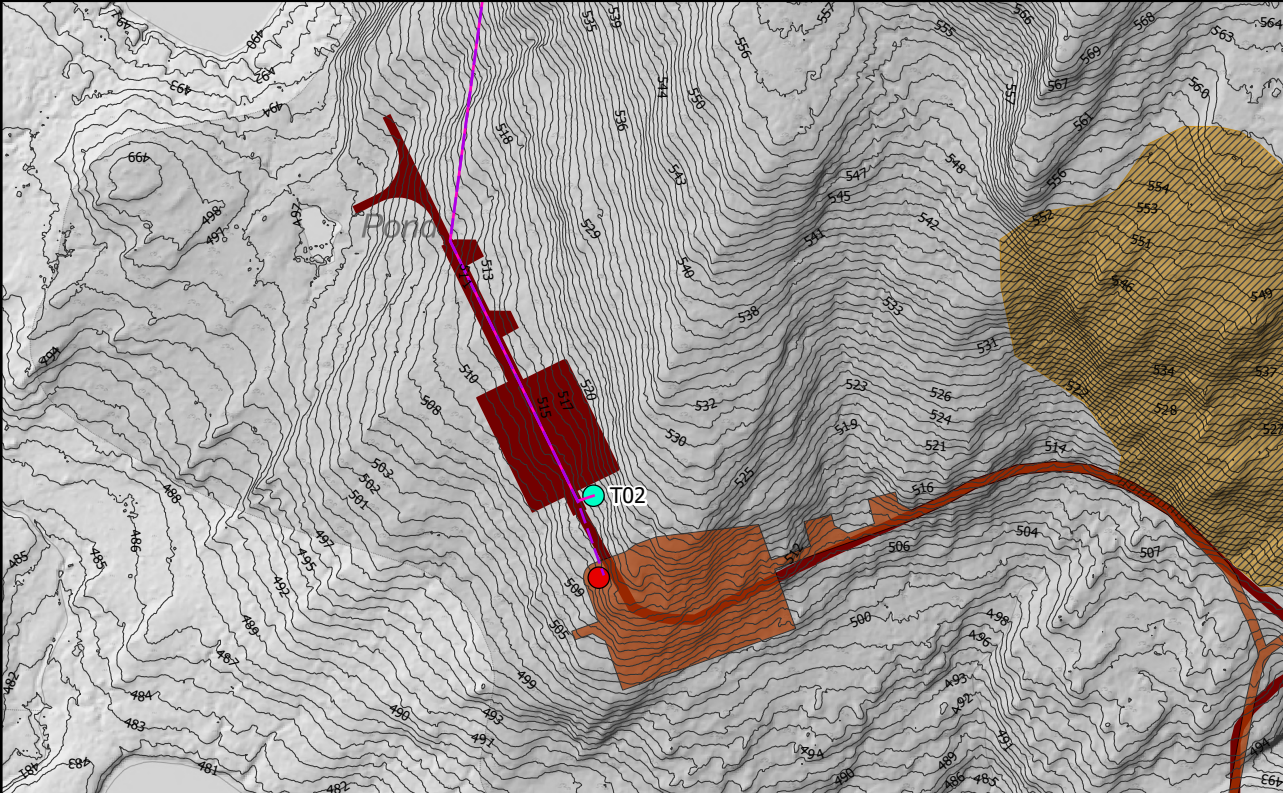
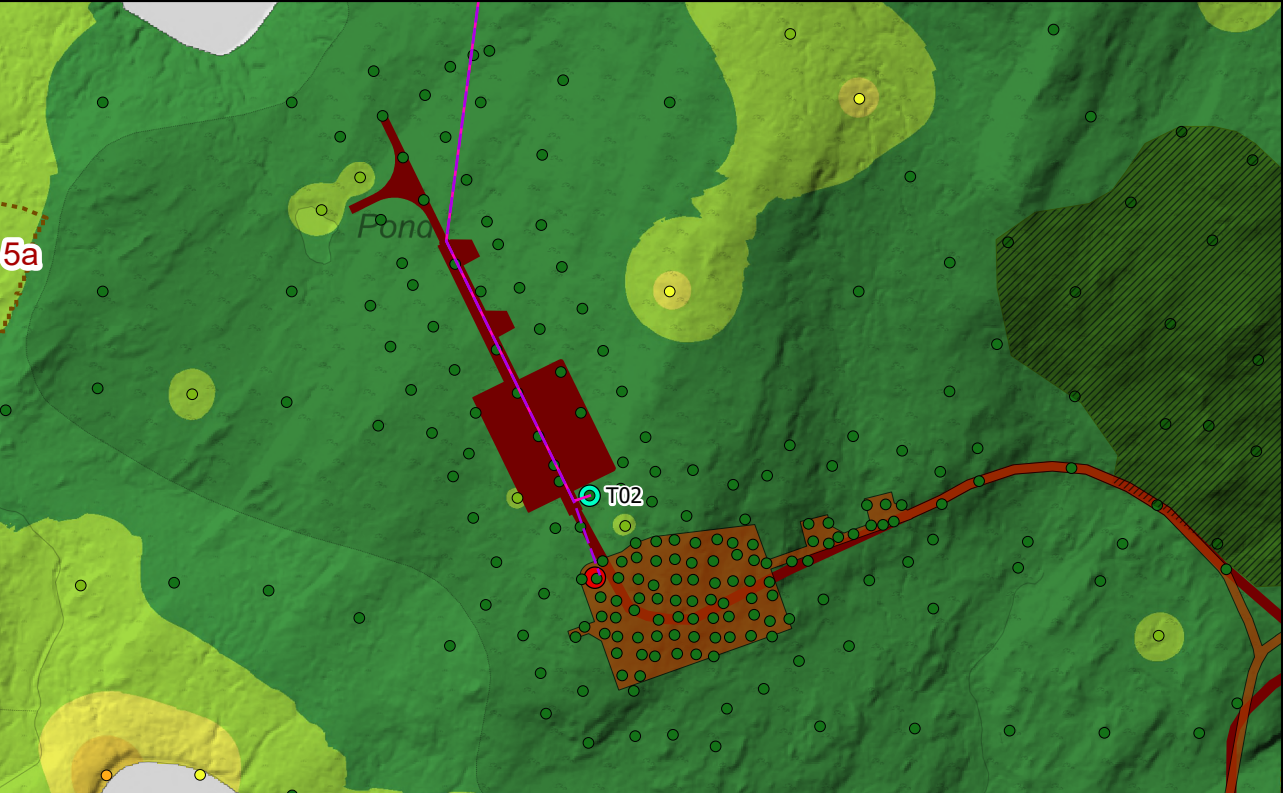


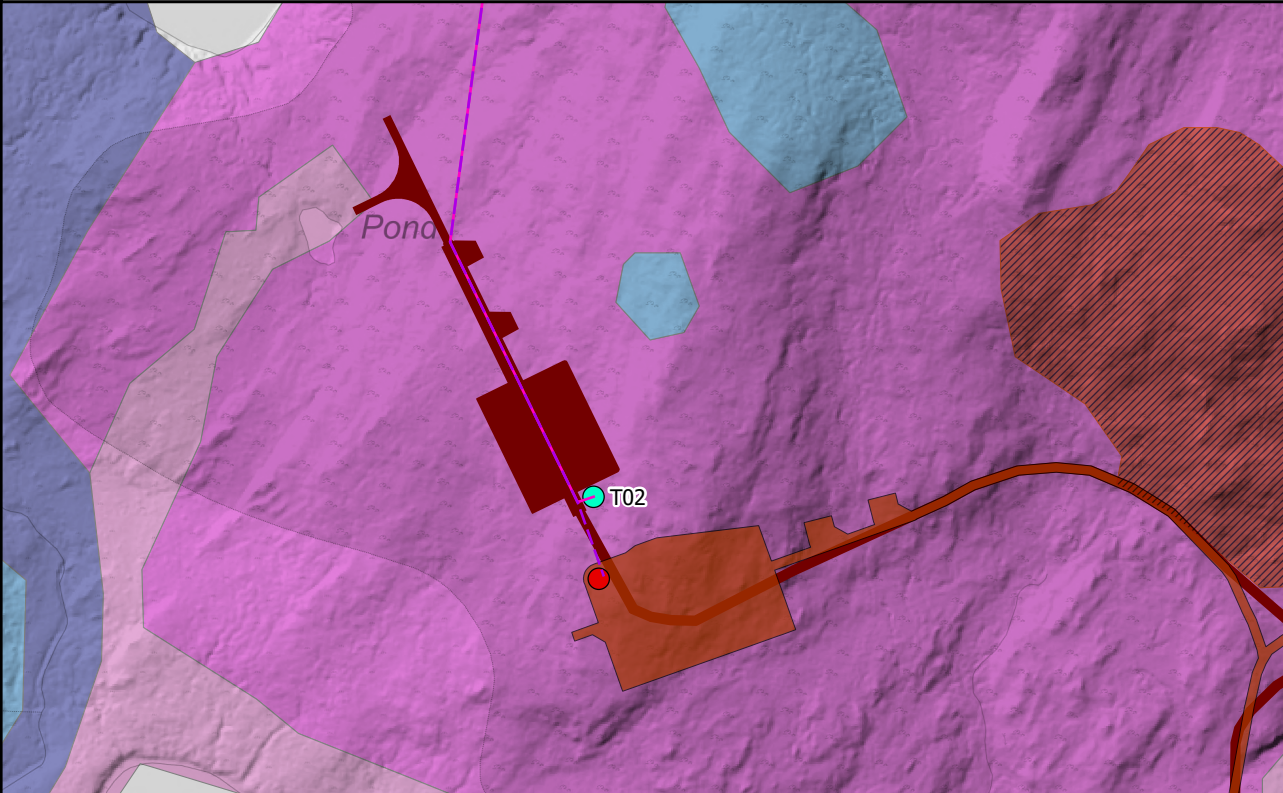
T02: Reason for Moving: This move is a value engineering opportunity that positively impacts site disturbance. The turbine is moved slightly south, with the hardstand rotated, resulting in a reduction of required site tracks.



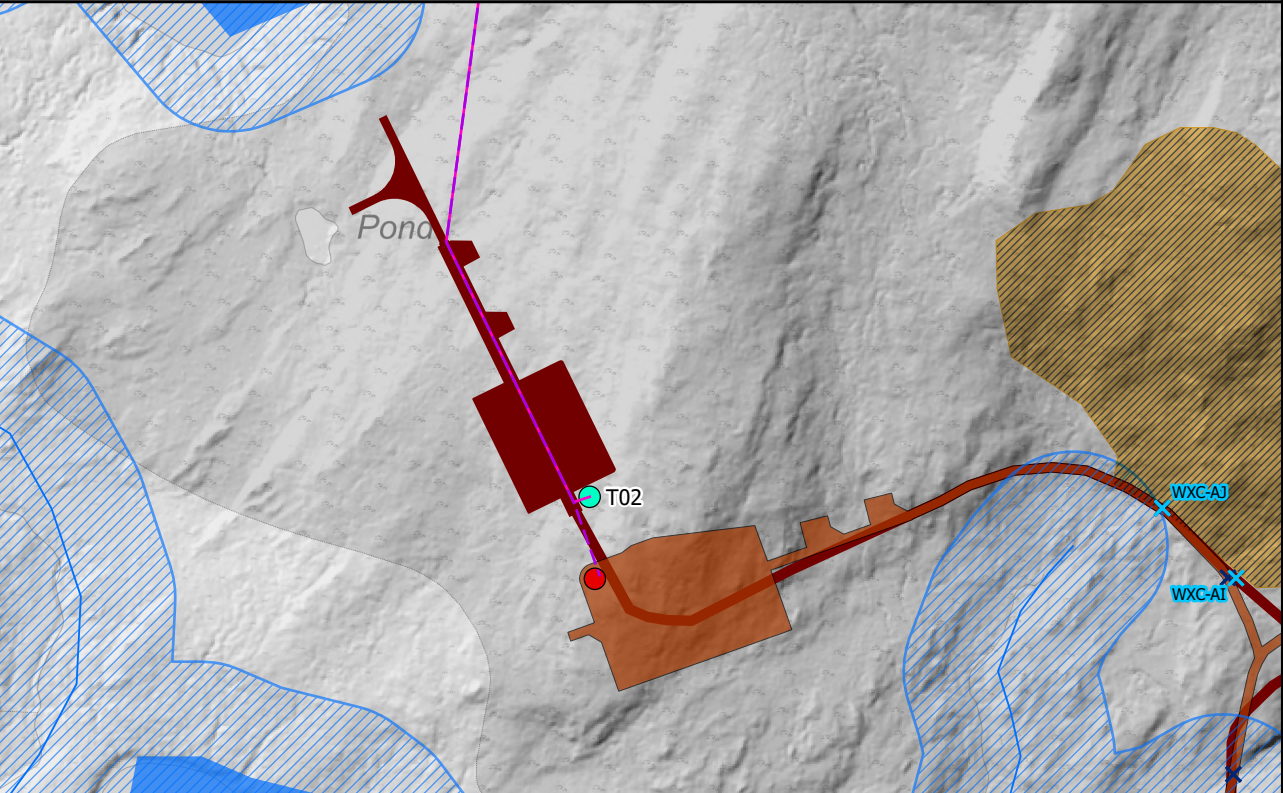
Engineering: The rotated hardstand position will achieve (as far as feasible) a balance between cut-fill on this spur. The new turning head has been positioned to extend into a relatively flat area of ground to the south of the spur. The access gradient to the spur has been checked for suitability against the WTG supplier's track requirements.



Geology Impacts: Rotating the hardstand approximately 90 degrees clockwise aligns it with the track spur off the main spine road, eliminating the need for the track extending northeast from the turbine location. This reduces the track length by approximately 260m. The new hardstand location is within the allowable micro-siting limit of the consented track leading to the turbine base. The proposed turbine location is within the 50m micro-siting limit from the current consented position.



Ecology Impacts: The overall disturbed area is reduced by removing 260m of track and a turning head. All infrastructure remains within the same NVC survey habitat type (M15c). An area of M17c is preserved by removing the turning head north of the consented track.



Hydrology Impacts: Reducing the northeast track and removing the turning head near the watercourse buffer minimizes impact on the lochan to the north. Although the consented track does not enter the watercourse buffer, construction activities in this area would have had some impact, which is now avoided.

Legend

- Site Boundary
- Consented Turbine Location
- Proposed Varied Turbine Location
- Consented Indicative Cross Country Cable Route
- Proposed Varied Indicative Cross Country Cable Route Alignment
- Proposed Varied Development Layout
- Consented Development Layout
- No Change to Consented Development
- Consented Borrow Pit Excluded From Proposed Varied Development

Engineering

1m Contour

Geology

Peat Depth (m)

- 0 - 0.5
- 0.5 - 1
- 1 - 1.5
- 1.5 - 2
- > 2
- 0 - 0.5
- 0.5 - 1
- 1 - 1.5
- 1.5 - 2
- > 2
- Potential Peatland Restoration Areas

Ecology

NVC

- H9e
- M15c
- M17/M17a/M18a/M19a
- M17a

Hydrology

- Consented Water Crossing
- Revised Water Crossings
- Watercourses (Based on OS 50k)
- Waterbodies (Based on OS 50k)
- 50m Water Buffer (Based on OS 50k)

Scale 1:4,000 @ A3

0 80 m



Figure 2.1b
Infrastructure Design Review
- Turbine 02

Bhlaraidh Wind Farm Extension
S36C Varied Development