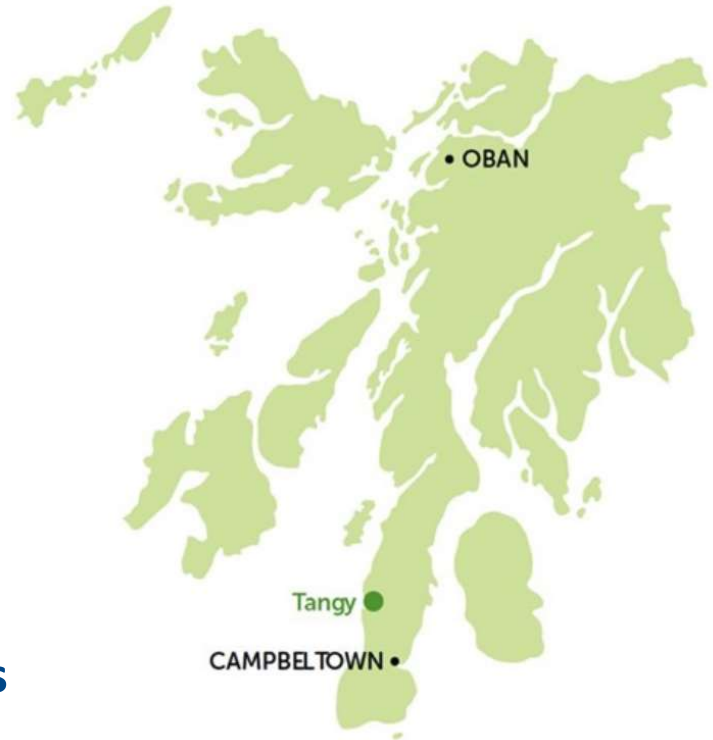




Tangy IV Wind Farm Proposal

Overview

- This exhibition presents proposals to repower and extend the existing 18.7MW operational Tangy Wind Farm, located approximately 9km northwest of Campbeltown in Kintyre.
- There are 22 operational turbines at Tangy, which have been generating electricity since 2003.
- The proposed 16 turbine wind farm could generate up to 80MW of renewable electricity with a tip height of up to 149.9m



SSE – responsible developers

- Headquartered in Perth, SSE employs around 21,000 people across the UK and Ireland and are committed to supporting the communities in which we live and work.
- Our purpose is to responsibly provide the energy and services needed now and in the future. We are involved in producing, distributing and supplying electricity and gas.
- We deliver energy to customers through a diverse range of energy generation including around 3,826MW of renewable generation capacity of which 3,091MW is in GB. Our renewable energy mix consists of:

Hydro:
1,150 MW

Onshore Wind:
1260 MW

Offshore Wind:
344 MW

Pumped Storage:
300 MW

Biomass:
37 MW



Tangy IV Wind Farm Proposal

The development process

Site selection

Consideration of a wide range of criteria including wind speed, access, grid connection, landscape, environmental and recreational designations, site topography and hydrology.



Scoping

A Scoping Report was submitted to Statutory and Non-statutory Consultees in April 2017. Responses and feedback help to define the scope of the Environmental Impact Assessment (EIA).



Environmental Impact Assessment report

The results of environmental surveys, desk based assessments and consultation is assessed in line with the scope of the EIA to inform the final site layout.

This information is then presented within an EIA report which supports the Section 36 application.

We are here

Public Exhibitions

Exhibitions are held in the local area, to present the proposals and take feedback into account, before the application is submitted.

Submission of the application

The planning application and supporting EIA Report will be submitted to the Scottish Government who will consult with statutory and non-statutory consultees before deciding on consent.

Copies of the application and the EIA report will be sent to consultees (including local community councils). The information will also be available for public viewing during the consultation period.

Consideration & determination of application

The application will be assessed against planning and energy policies, together with consultee and community feedback. A decision will be announced by the Scottish Government thereafter.

Tangy IV Wind Farm Proposal

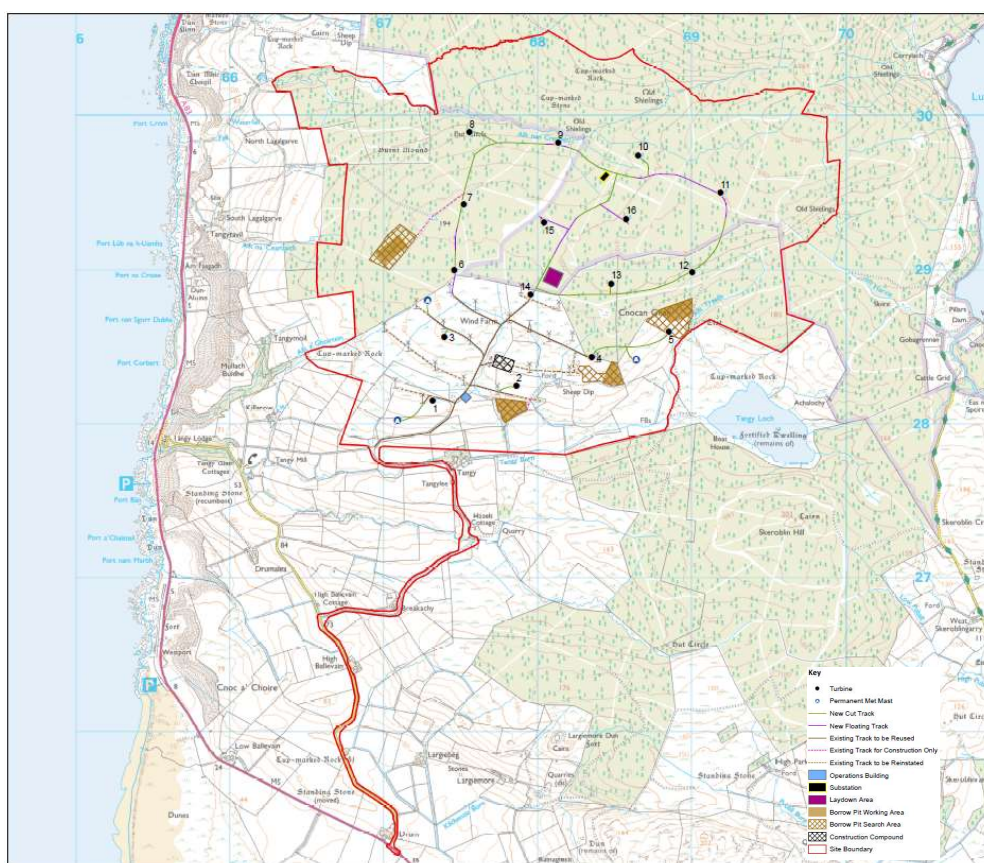
The project

The existing operational wind farm comprises two developments (Tangy I and Tangy II) with 22 turbines delivering an installed capacity of 18.7MW. Tangy I has 15 turbines and Tangy II has 7 turbines, consented until August 2022.

In 2015 our repowering proposals for Tangy III were consented (15 turbines with an installed capacity of 34.5MW). The site was designed to utilise the excellent coastal wind resource, whilst utilising the existing site infrastructure to replace the older, less efficient turbines as they are near the end of their operational lifespan. However, changes to the onshore wind support mechanism required a re-assessment of options, leading to a proposed amendment to the consented tip height, from 125m to 130m, delivering an installed capacity of up to 49.5MW.

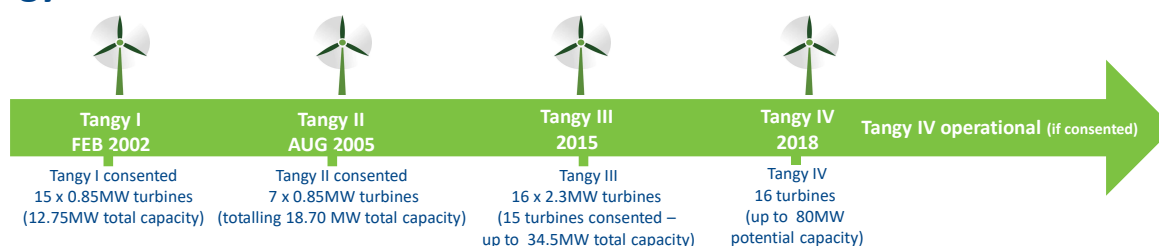
Our proposals for Tangy IV include the same proposed Tangy III layout with 16 turbines, a tip height of up to 149.9m and rotor diameter of up to 130m. Advances in turbine technology mean Tangy IV could deliver up to 80MW (an increase of over 60MW from the operational site, with six fewer turbines). Since these proposals exceed 50MW, a Section 36 application will be submitted to the Scottish Government for consideration.

Site layout



© Crown copyright and database rights 2018 Ordnance Survey 0100031673

The Tangy timeline



Tangy IV Wind Farm Proposal



Wind farm components

- 16 turbines of up to 149.9m tip height with external transformers;
- A hardstanding area at each turbine base;
- Three permanent meteorological masts;
- Up to two site substations (one new and possible retention of existing);
- An operations control building with parking and welfare facilities;
- 11 km of onsite access tracks with associated watercourse crossings (of which approximately 7.4 km are new and 3.6 km are upgrades to existing tracks) and
- Onsite underground cabling.



Construction components

- Temporary construction compound and laydown areas (option for on-site concrete batching);
- Temporary meteorological masts;
- Temporary telecoms infrastructure;
- Forest removal and subsequent replanting;
- Dismantling of existing turbines and associated reinstatement (turbine bases to ground level and approximately 2.1km of redundant access tracks) and
- Up to 4 borrow pits.

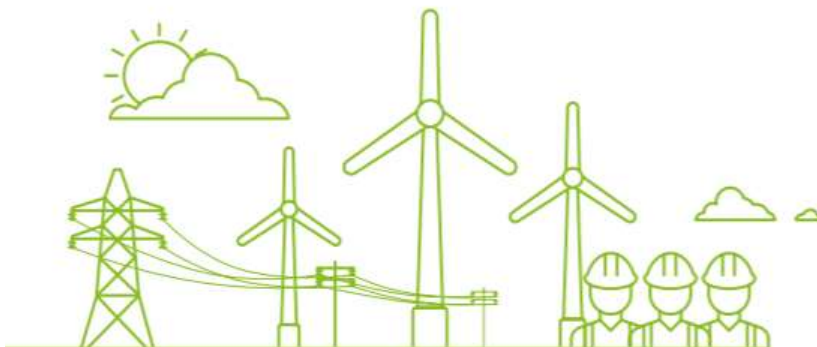


Grid connection

Power generated from the turbines would be transferred via underground cables to the on-site substation (or substations) before onward transmission on the National Grid.

The connection to the National Grid, outwith the site, falls under a separate application process.

This requires the network provider to determine the most appropriate method for onward transmission from the re-powered wind farm.



Tangy IV Wind Farm Proposal



Access

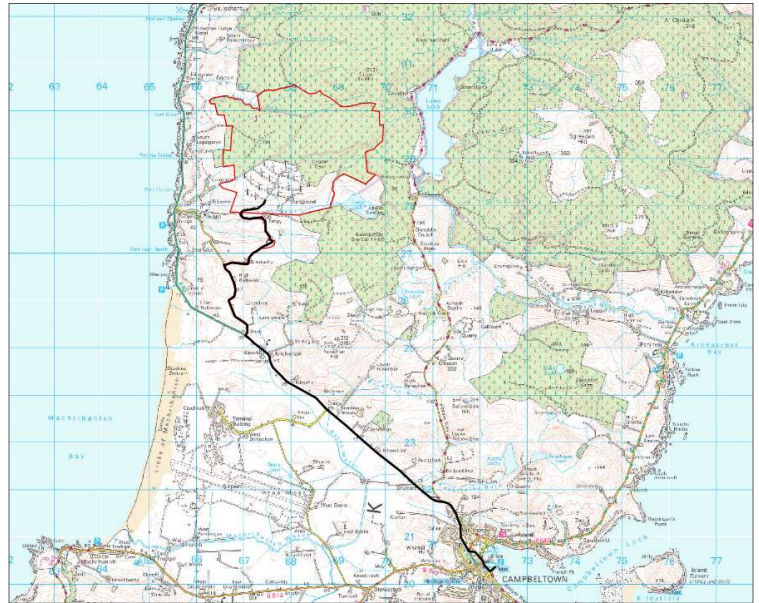
Access during both the construction and operational phases of the re-powered site would be unchanged from the existing site access.

This route is along the A83 to the south of the site and connects to Campbeltown and the B842 and B843 roads.

The B843 provides access to Machrihanish and to CS Wind Limited, where turbine towers could be transported to the site.

Other turbine components could be delivered to the port facilities at Campbeltown and transported via the A83 to the site.

Proposed access route

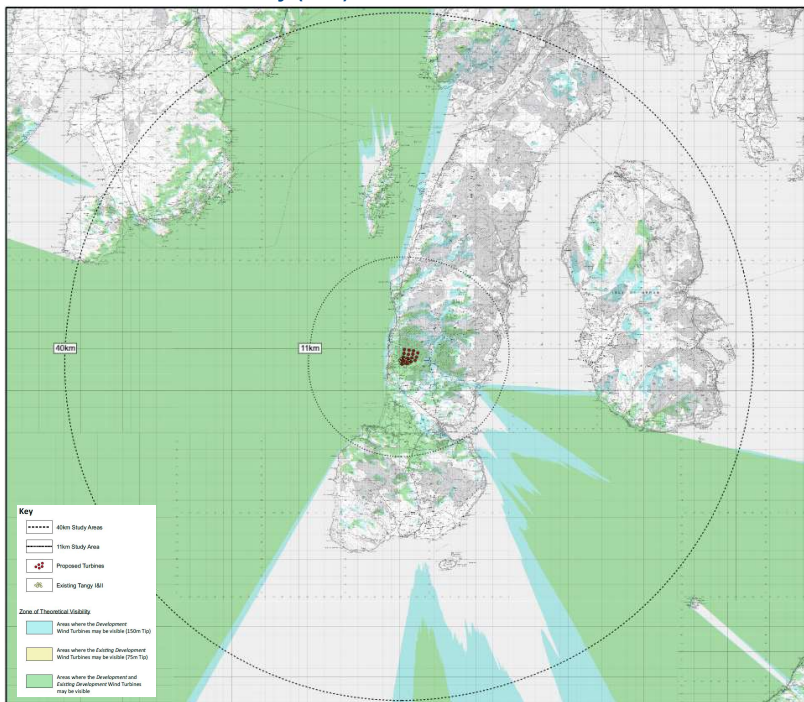


© Crown copyright and database rights 2018 Ordnance Survey 0100031673

Landscape and visual assessment

The landscape and visual assessment looks at potential effects from the presence of wind turbines and other site infrastructure. As the operational wind farm (Tangy I and II) would be removed as part of the proposed development and replaced with a reduced number of turbines (16 compared to 22 in the existing scheme), from the majority of viewpoints this would provide an improved visual composition.

Zone of theoretical visibility (ZTV)



The Zone of Theoretical Visibility (ZTV) shows the indicative theoretical visibility of the proposed turbine layout based on bare ground (i.e. There are no screening effects such as trees, vegetation or buildings) up to 40 km from the site, and represents a worst case scenario.

We have a computer generated model available at the exhibition showing how the wind farm will look from chosen viewpoints. If you wish to view a computer generated 3D visualisation from specific viewpoints, such as residential properties, please ask a member of the project team.



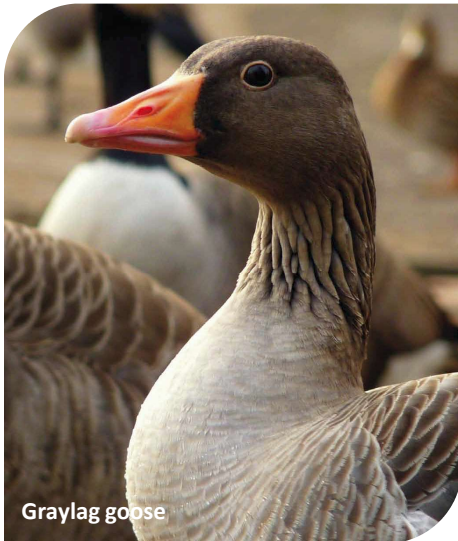
A large version of maps are available to view at this exhibition, please ask a member of staff.

Tangy IV Wind Farm Proposal



Environmental considerations

An Environmental Impact Assessment (EIA) has been undertaken to identify and assess the potential environmental impacts of the proposed Tangy III Wind Farm. The information gathered through the EIA process has helped to shape the design and layout of the proposed Wind Farm and any required mitigation measures.



Graylag goose

Ornithology

Since early 2013 a range of field surveys have been undertaken to establish baseline conditions on-site in order to assess likely disturbance, displacement, collision risk and barrier effects to species of high conservation value or sensitivity to wind farms.

A range of species identified within the site area include greenland white-fronted geese, graylag geese, peregrine falcon, merlin, hen harrier, short-eared owl and herring gull.

Survey results and subsequent assessment have indicated that there are no significant impacts on identified species.

Ecology

Habitat and protected species surveys have been undertaken within the site. The presence of otter, water vole, pine marten, wildcat, adder, great crested newts and bats, amongst others, were surveyed for within the site and the surrounding area. A range of habitats are present including woodland plantation, rush pasture, grasslands and mire communities.

There are no statutory ecological designations on site. Tangy Loch SSSI is located within 100m and Machrihanish Dunes SSSI is located over 2km away.



Otter

Assessments to date have indicated that there are no significant impacts on protected species and habitats.

Other environmental aspects

The EIA report includes consideration of potential effects on traffic and transport; noise; peat stability; cultural heritage; telecommunications; aviation and other infrastructure.

Assessments were also undertaken on land-use; tourism and recreation; hydrology; socio-economics; shadow flicker; climate and carbon emissions.



Tangy IV Wind Farm Proposal

SSE's contribution to society

Since 2008, we have increased our renewable generation capacity significantly, with onshore wind capacity increasing three-fold to 1,917MW as of June this year. Of the total committed spend in onshore wind, an estimated 66% was, or is expected to be, spent in the UK or Ireland. This growth in our onshore wind portfolio is delivering the following:

Around 13.4m tonnes of CO₂ emissions have been avoided through clean low carbon energy generation, between 2008 and 2018

In 2017/18, enough electricity was generated to supply more than 1.35 million homes in the UK and Ireland

The total spend associated with onshore wind farms built and/or operated between 2008 and 2018 is estimated to be around £6.1bn



We are the first FTSE 100 company to be accredited with the Fair Tax Mark, achieved in 2017 for the fourth consecutive year.



We are one of the biggest UK companies to become a living wage employer, in 2013, supporting the principle of a fair wage which covers the cost of living.

More than £23m in community benefit funding provided in the UK (£21.5m in Great Britain and about £1.5m in Northern Ireland) and more than €5m in Ireland.

Supported nearly 5,000 projects in communities across areas in which we own and operate our wind farms.



Local Opportunities

Our approach is to ensure that as many local businesses and people as possible benefit from the opportunities our new wind developments bring with them. Throughout different project phases, we will look to utilise the services and skills of local businesses which ensure that our projects have a lasting positive effect in the local area.

If our proposal is granted planning permission, and prior to construction beginning, we will hold a 'meet the buyer' event where we invite local businesses and suppliers to meet our construction team and the appointed Principal Contractor, to offer their services.

In addition to direct employment, our experience shows that other local businesses such as accommodation providers, shops and suppliers benefit directly particularly during the construction phase of our projects.

Once the wind farm is operational there may be opportunities for local businesses to undertake maintenance work across the site which could include the provision of plant or materials, fencing and drainage work, road repairs and building maintenance.

Tangy IV Wind Farm Proposal

Working with communities

We seek to be an active contributor to the communities in which we work and live. Through our Be the Difference scheme, each of our employees can take a day away from their usual job and give a helping hand to a community project of their choice. Some of our recent local activities are detailed below:



Funding of £2250 has been provided to support the local social enterprise group, Inspiralba, carry out a research project at Westport Beach.

Survey work will be carried out by a specially recruited team and will include activities such as species identification and customer engagement works.



In May 2018, 19 members of the project team travelled to Kintyre to run, cycle and support the Kintyre Way Ultra.

The team supported the event with some providing marshalling duties and others running and cycling over 500 miles to help raise money for their chosen charities.



Campbeltown Brass

Sponsorship of £2,500 has been awarded to help the band make their trip to the National Brass Band Championships in Cheltenham in November 2018. The band is a successful community organisation and current Scottish Second Section Champions. Travel and accommodation costs pose significant challenges for the band to attend competitions and other community events, which provide their young members the chance to experience music success on a national level.

Tangy II Community Benefit Fund

Our community investment fund packages are voluntary payments made during the lifetime of new operational wind farms. The funds do not form part of any planning application and are not considered during, or as part of, the planning consent determination process.

Through our existing Tangy II Wind Farm fund we provide funding to community and charitable groups such as the Scouts, Girl Guides etc, within the community council areas of Campbeltown, East Kintyre, West Kintyre, The Laggan and Southend.



To find out more about funding opportunities, please visit www.sse.com/communities.



Tangy IV Wind Farm Proposal

What happens next?

The Environmental Impact Assessment report is nearing completion and we anticipate that an application will be submitted to the Scottish Government in August 2018. The application will be widely publicised, notifying interested parties of the opportunity to make representations and the process for doing so.

Following the statutory consultation period, the Scottish Government will assess the application against planning and energy policy. All consultee representations will be considered (including comments from the local community). A recommendation will then be made regarding the determination of the application.



Commenting on the proposals

The consultation period for formal representations will open once the application is submitted and advertised. At this time, details on how to make representations about the proposal will be published.

Representations should identify the proposal, specify the grounds for representation, be dated and clearly state the name (in block capitals), full return email or postal address of those making representations.

The Scottish Government
Energy Consents Unit,
4th Floor, 5 Atlantic Quay,
150 Broomielaw,
Glasgow,
G2 8LU



Project contact

For further information, please contact our Project Liaison Manager:

Pauline Allison
SSE
1 Waterloo Street
Glasgow
G2 6AY



07880 180662



pauline.allison@sse.com



sse.com/tangy-repower