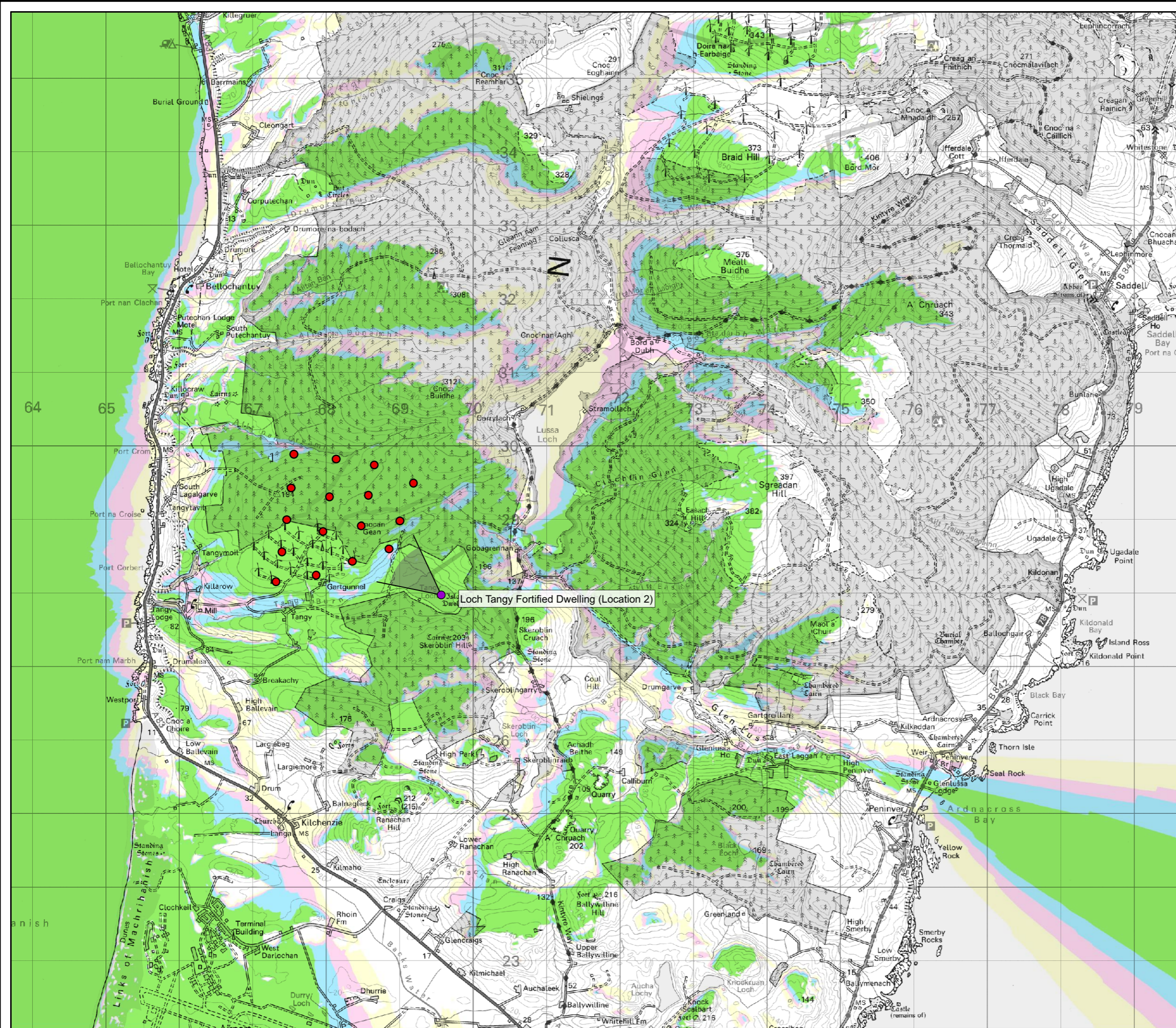
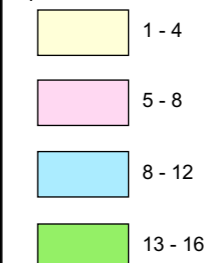


Key

- Proposed Turbine
- Cultural Heritage Viewpoint

No. of Theoretically Visible Turbines
Tip-150m, Hub- 87m, Blade- 126m



Scale 1:50,000 @ A3

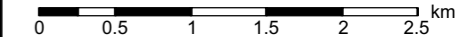
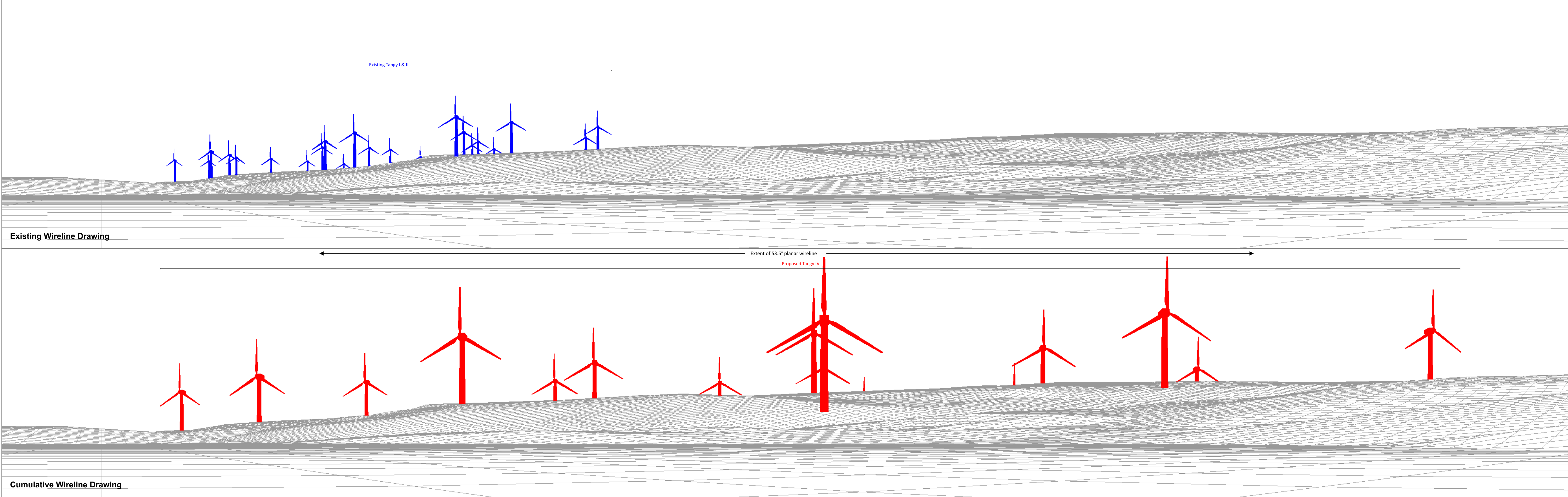



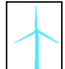


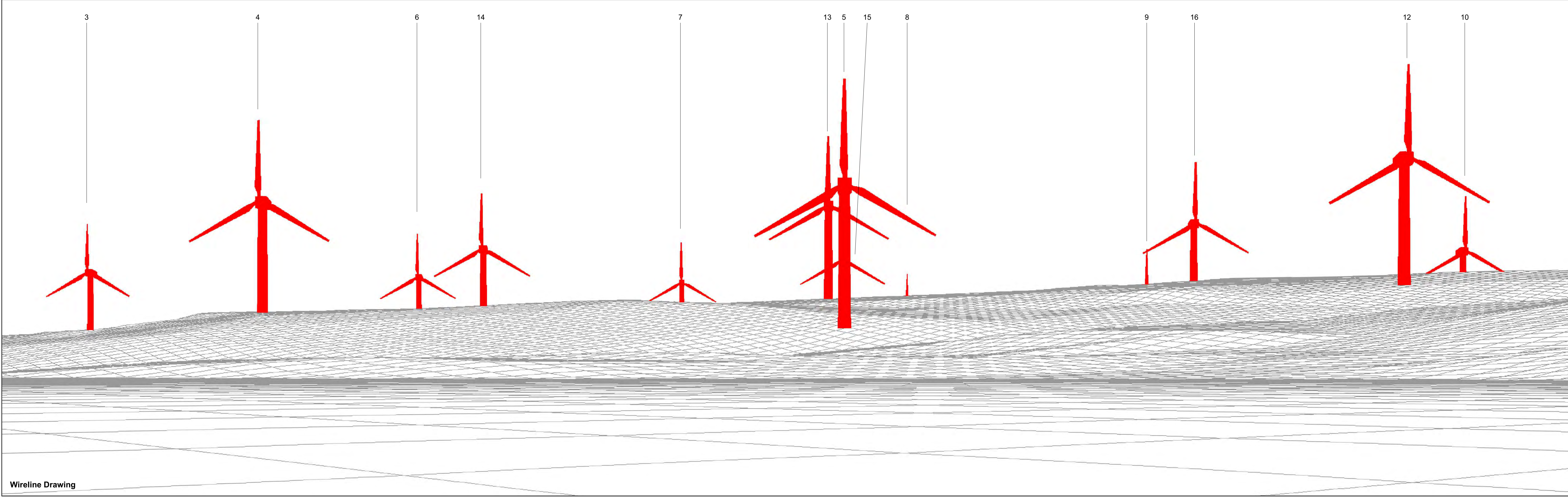

Figure 13.3.2.1
Cultural Heritage Viewpoint from Tangy
Loch - Fortified Dwelling (Location 2)
Location Plan

Tangy IV Wind Farm
EIA Report



Tangy IV Wind Farm
Figure 13.3.2.2 - Cultural Heritage Viewpoint from Tangy Loch - Fortified Dwelling (Location 2)

	Proposed Tangy IV Wind Turbines (150m Tip)		Consented Wind Farm	Drawing No. - 117037-D-13.3.2.2	OS reference:	169561 E 627970 N	Horizontal field of view:	90° (cylindrical projection)
	Operational Wind Farm		Wind Farm Application	Revision - 1.0.0	Ground level:	133.8 m AOD	Viewing distance:	522 mm
				Date - 15.08.2018	Direction of view:	309.26°		
					Nearest existing turbine:	1.2 km		
					Nearest proposed turbine:	0.9 km		



Tangy IV Wind Farm
Figure 13.3.2.3 - Cultural Heritage Viewpoint from Tangy Loch - Fortified Dwelling (Location 2)

Drawing No. - 117037-D-13.3.2.3	OS reference:	169561 E 627970 N	Horizontal field of view:	53.5° (planar projection)
Revision - 1.0.0	Ground level:	133.8 m AOD	Viewing distance:	812.5 mm
Date - 15.08.2018	Direction of view:	309.26°		
	Nearest proposed turbine:	0.9 km		

