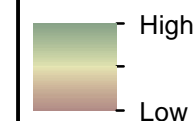


Key

- Red Line Boundary
- Proposed Varied Development Turbine
- 40km Wider Study Area
- 20km Detailed Study Area
- 5 km Buffer
- Wild Land Area (WLA) 34: Reay - Cassley
- Other WLA
- WLA Sub-Section Divider
- Assessment Location
- Access Route to Assessment Location

Map of Relative Wildness



Map of relative wildness GIS information obtained from Scottish Government Spatial Data Portal [SpatialData.gov.scot](https://spatialdata.gov.scot)

Scale 1:165,000@ A3
0 2 4 6 Km



A5.5 Figure 1
Map of Relative Wildness (WLA 34)

Achany Extension Wind Farm
Section 36C: EIA Report

Key

- Red Line Boundary
- Proposed Varied Development Turbine
- 40km Wider Study Area
- 20km Detailed Study Area
- 5 km Buffer
- Wild Land Area (WLA) 34: Reay - Cassley
- Other WLA
- WLA Sub-Section Divider
- ★ Assessment Location
- Access Route to Assessment Location

Jenks 8 Classification

- Class 1
- Class 2
- Class 3
- Class 4
- Class 5
- Class 6
- Class 7
- Class 8

Map of relative wildness GIS information obtained from Scottish Government Spatial Data Portal [SpatialData.gov.scot](https://spatialdata.gov.scot)

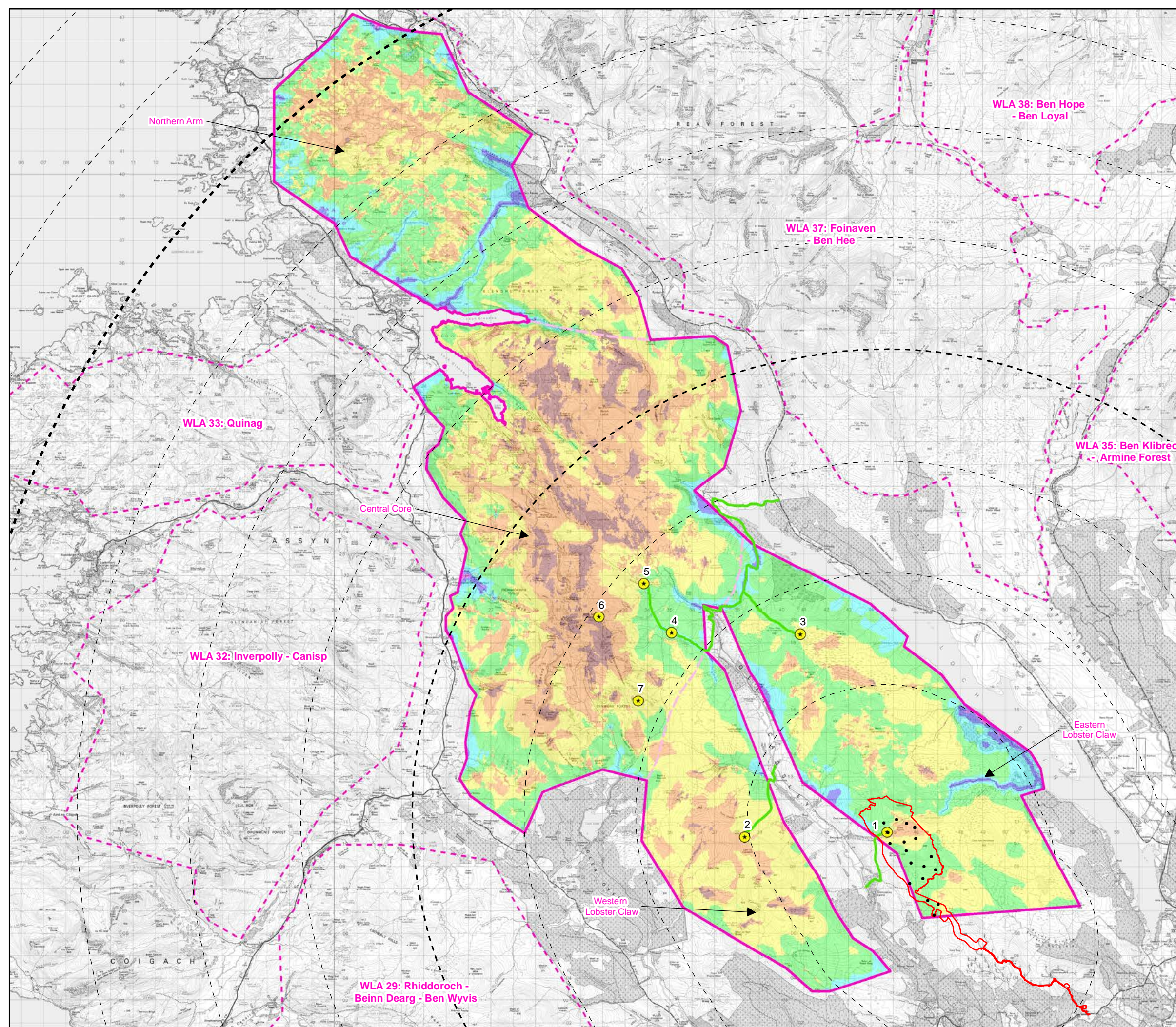
Scale 1:165,000@ A3

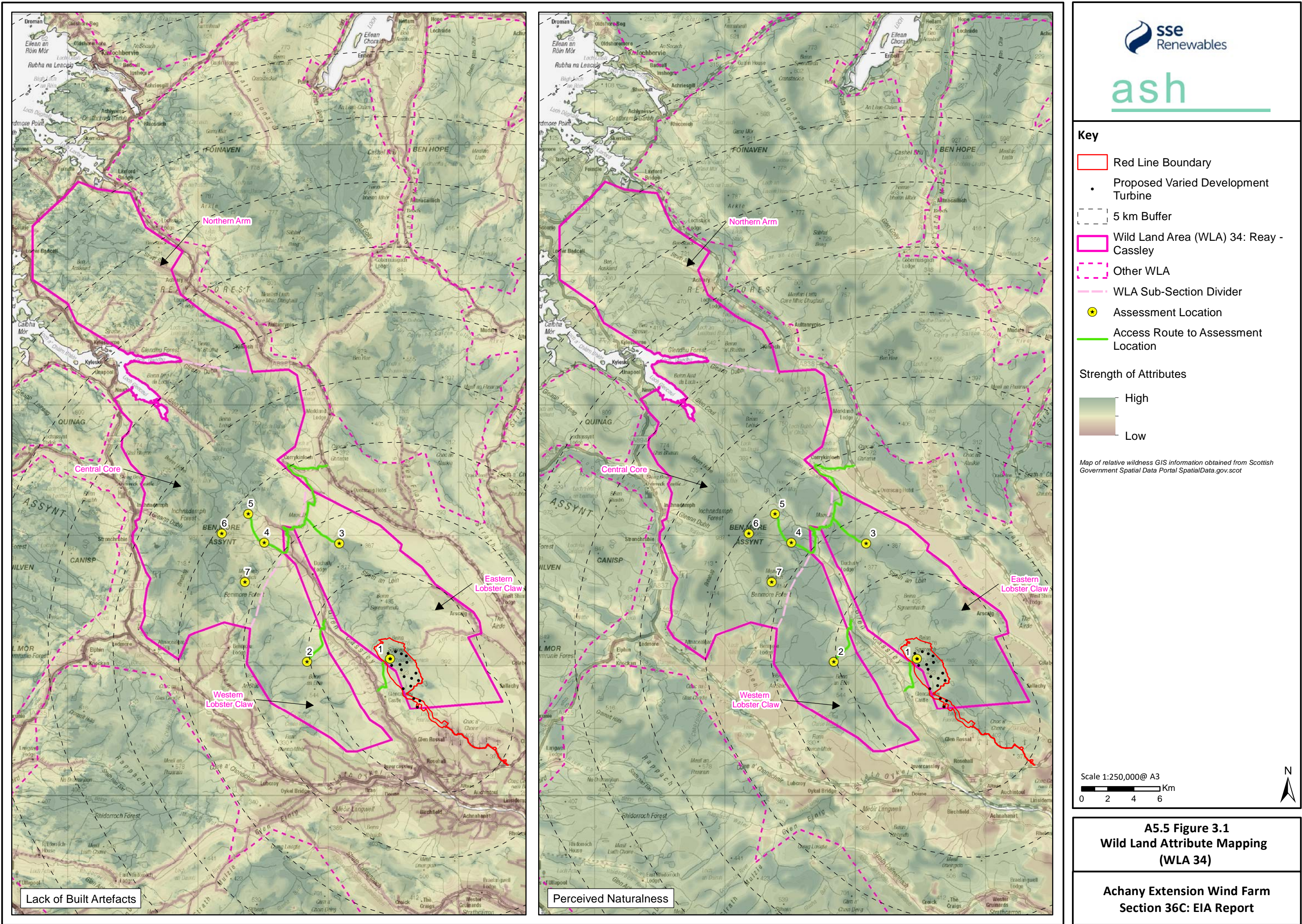
0 2 4 6 Km

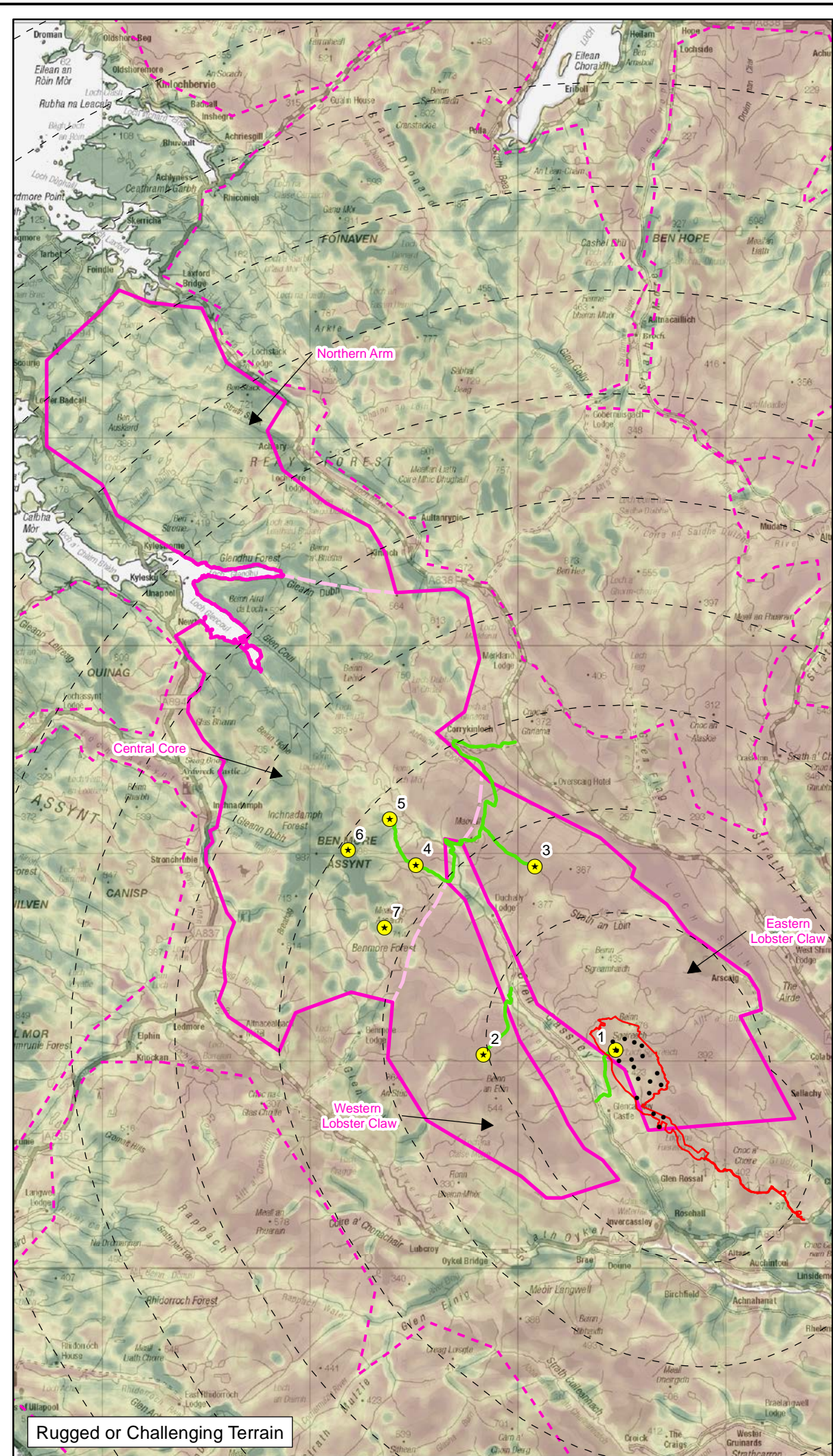
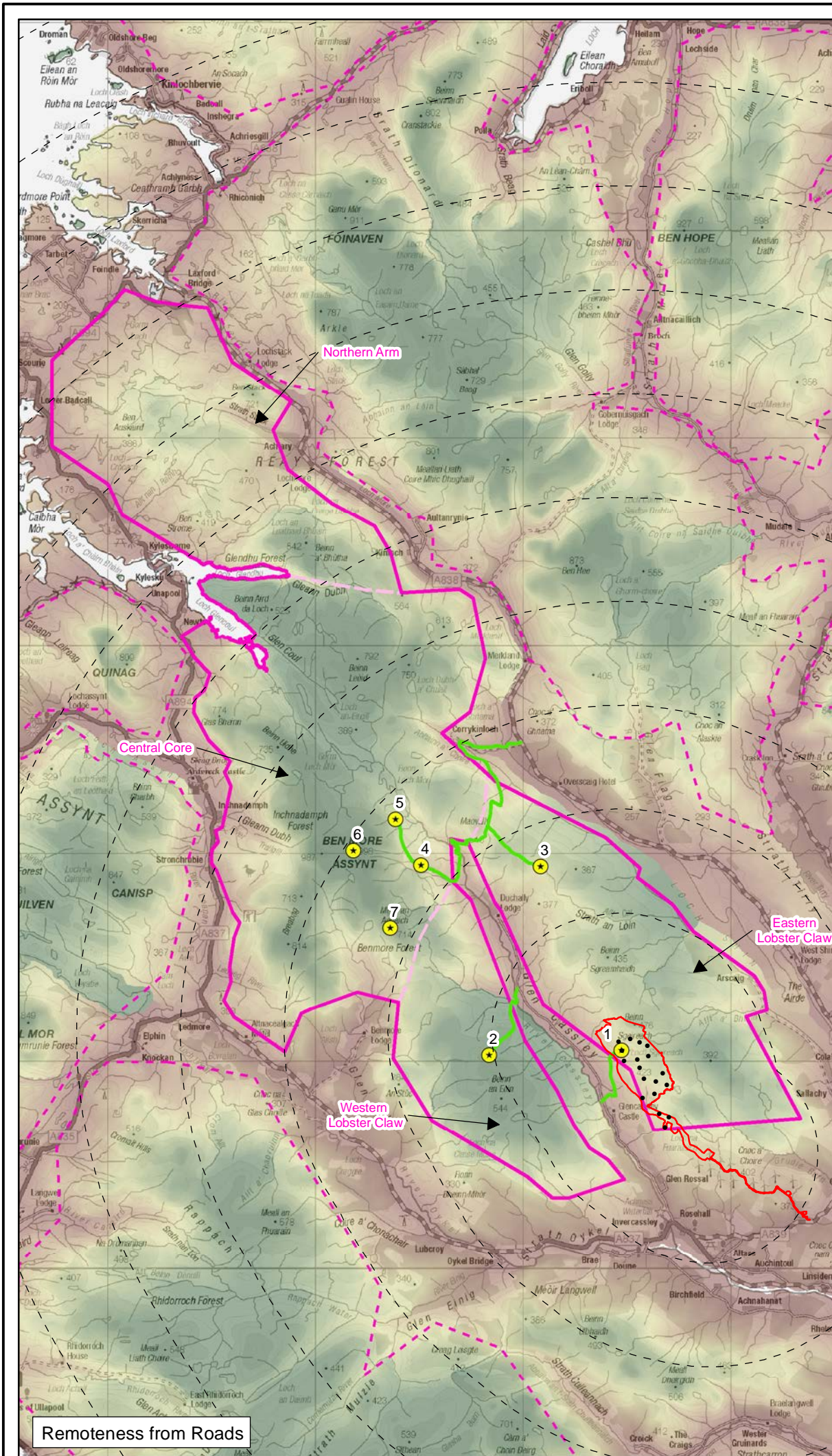


A5.5 Figure 2
Map of Relative Wildness:
Jenks 8 Interpretation (WLA 34)

Achany Extension Wind Farm
Section 36C: EIA Report







Key

- Red Line Boundary
- Proposed Varied Development Turbine
- 5 km Buffer
- Wild Land Area (WLA) 34: Reay-Cassley
- Other WLA
- WLA Sub-Section Divider
- Assessment Location
- Access Route to Assessment Location

Strength of Attributes

High

Low

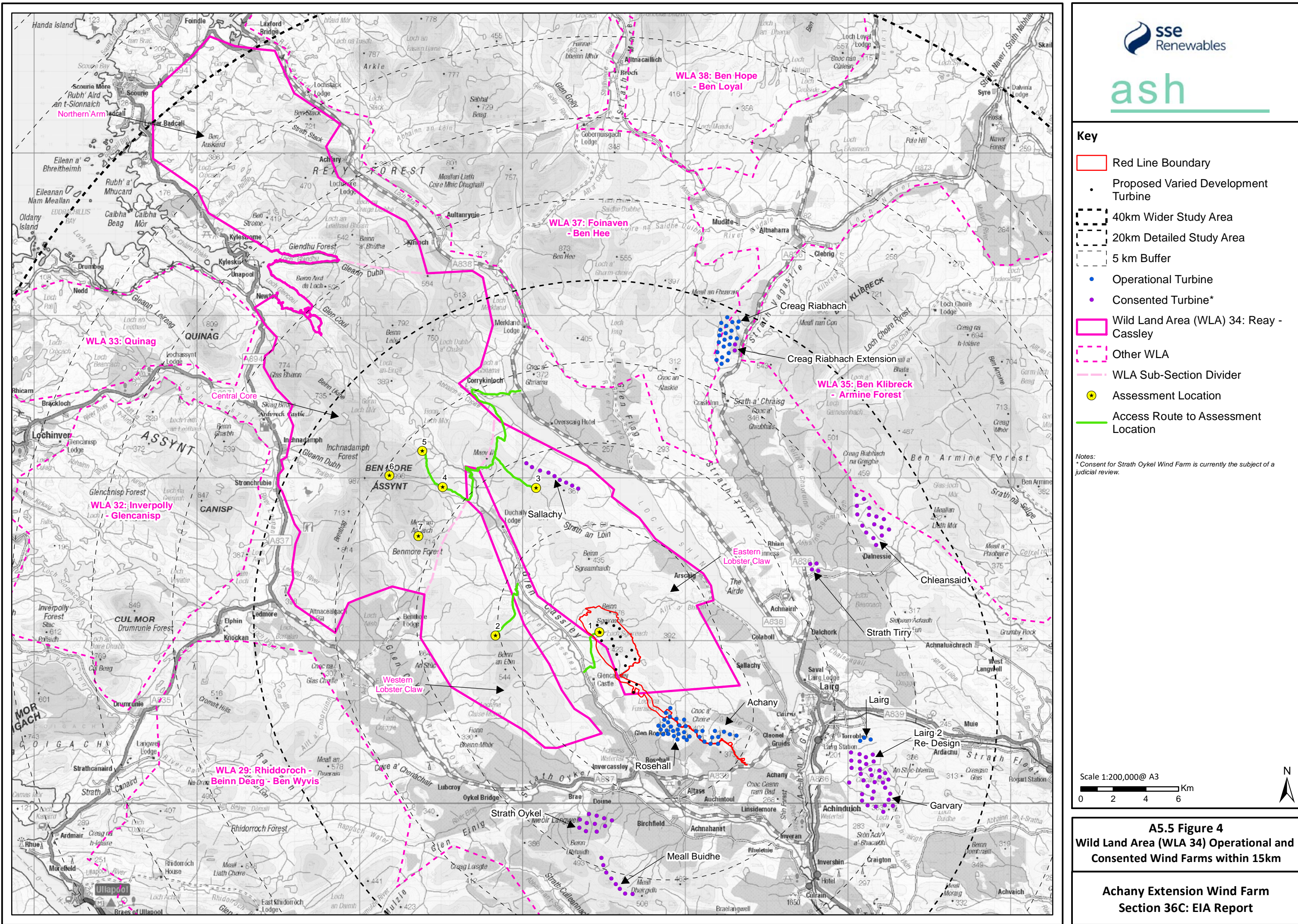
Map of relative wildness GIS information obtained from Scottish Government Spatial Data Portal [SpatialData.gov.scot](https://spatialdata.gov.scot)

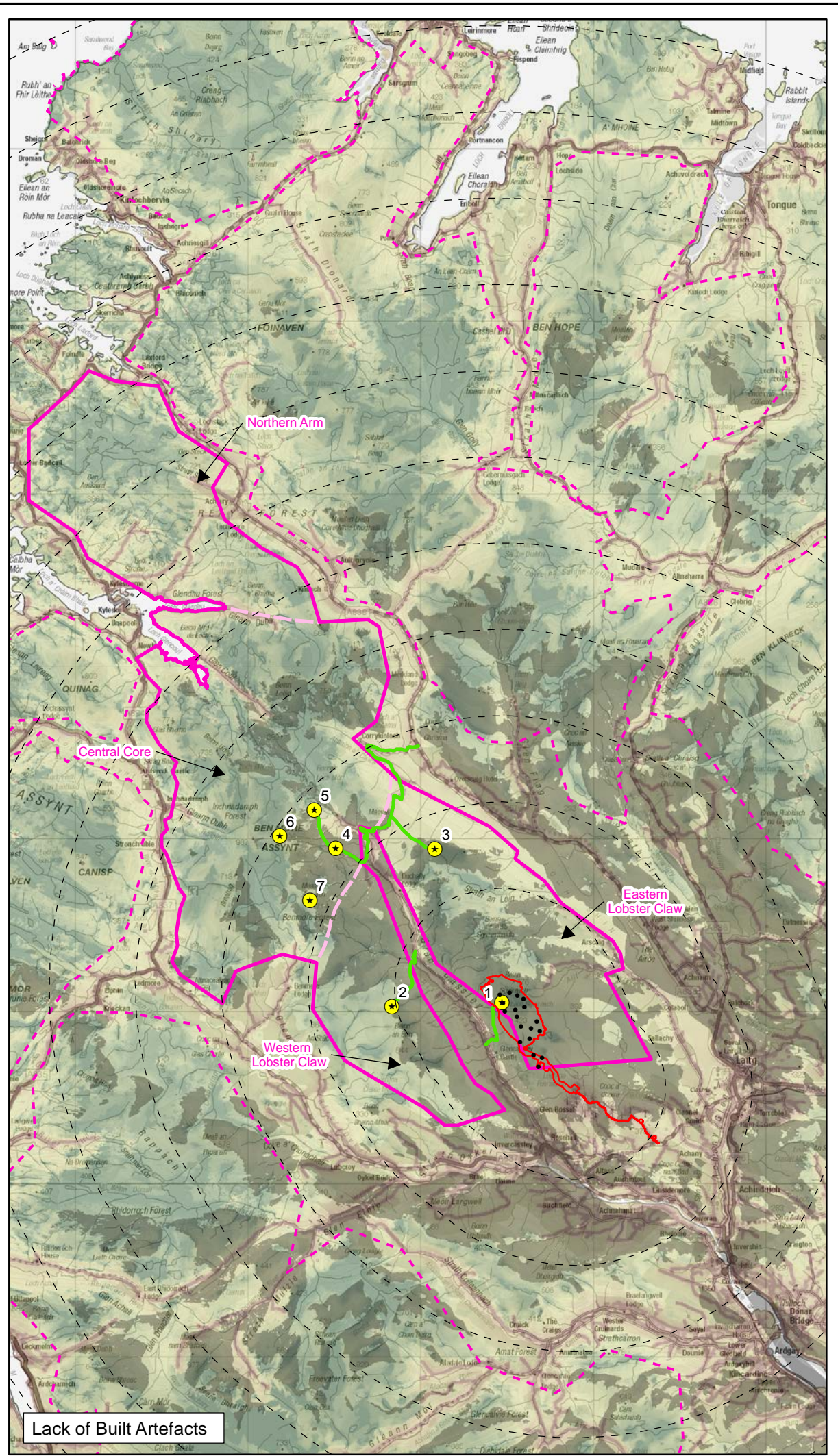
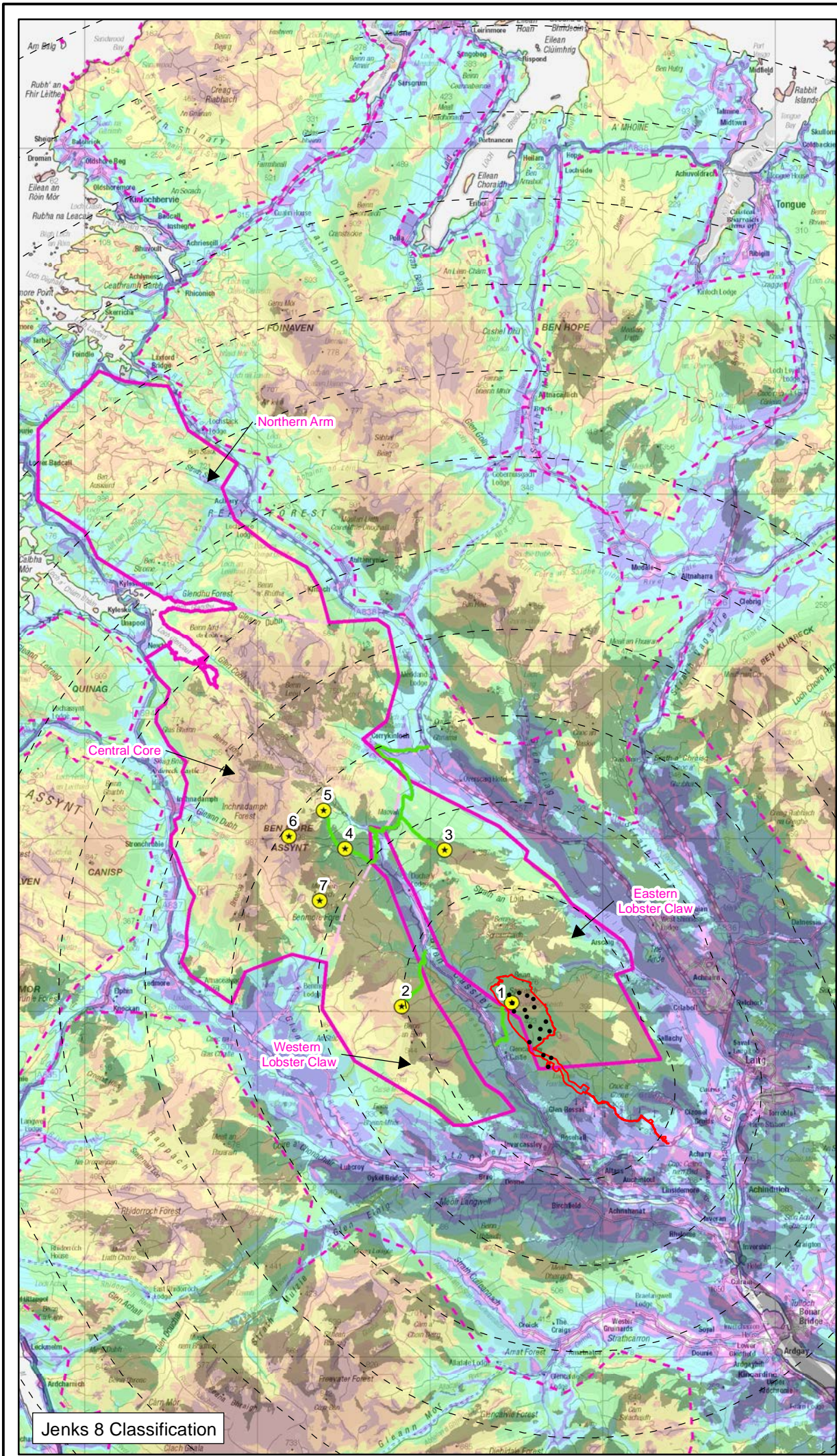
Scale 1:250,000@ A3



0 2 4 6 Km

A5.5 Figure 3.2
Wild Land Attribute Mapping
(WLA 34)


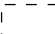







Achany Extension Wind Farm
Section 36C: EIA Report





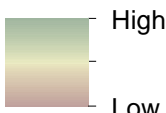



Key

-  Proposed Varied Development Site Boundary
-  5 km Buffer
-  Proposed Varied Development Turbine
-  Wild Land Area (WLA) 34: Reay - Cassley
-  Other WLA
-  WLA Sub-Section Divider
-  Assessment Location
-  Access Route to Assessment Location
-  Zone of Theoretical Visibility (ZTV)




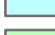
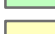


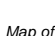
Note: the ZTV will show as different shades where overlaid on the Jenks 8 or Attribute Mapping.

Lack of Built Artefacts



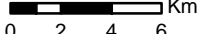
High
Low

Jenks 8 Classification


	Class 1
	Class 2
	Class 3
	Class 4
	Class 5
	Class 6
	Class 7
	Class 8

Map of relative wildness GIS information obtained from Scottish Government Spatial Data Portal [SpatialData.gov.scot](https://spatialdata.gov.scot)

Scale 1:300,000@ A3



0 2 4 6



A5.5 Figure 5
ZTV Overview (WLA 34):
Proposed Development

Achany Extension Wind Farm
Section 36C: EIA Report