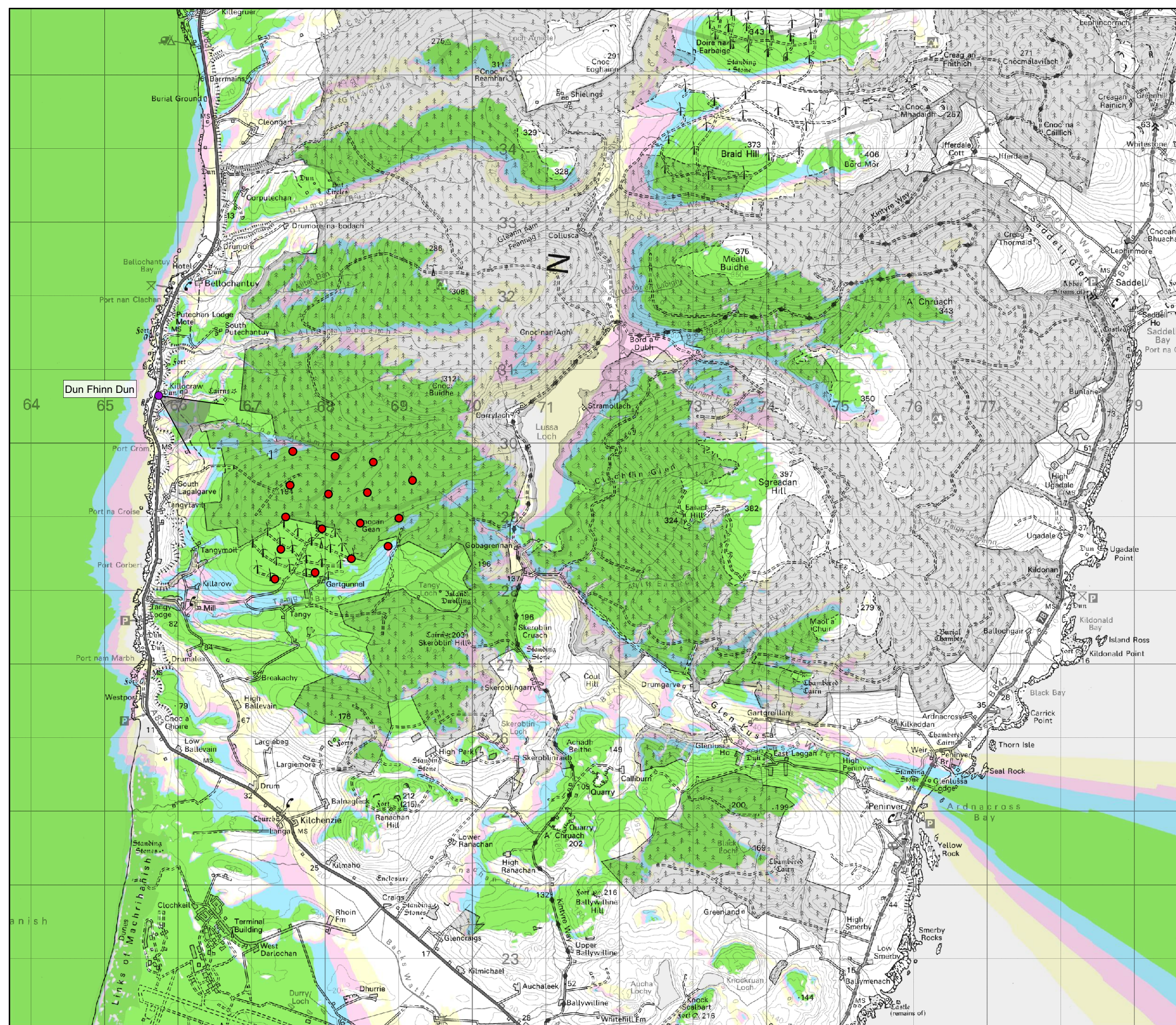


Key

- Proposed Turbine
- Cultural Heritage Viewpoint

No. of Theoretically Visible Turbines
Tip-150m, Hub- 87m, Blade- 126m

- 1 - 4
- 5 - 8
- 8 - 12
- 13 - 16





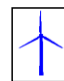

Scale 1:50,000 @ A3
0 0.5 1 1.5 2 2.5 km

Figure 13.3.6.1
Cultural Heritage Viewpoint from
Dun Fhinn Dun
Location Plan

Tangy IV Wind Farm
EIA Report



Tangy IV Wind Farm
Figure 13.3.6.2a - Cultural Heritage Viewpoint from Dun Fhinn, dun

	Proposed Tangy IV Wind Turbines (150m Tip)		Consented Wind Farm
	Operational Wind Farm		Wind Farm Application

Drawing No. - 117037-D-13.3.6.2a-b
Revision - 1.0.0
Date - 15.08.2018





OS reference: 165728 E 630645 N
Ground level: 15.1 m AOD
Direction of view: 122.01°
Nearest existing turbine: 2.4 km
Nearest proposed turbine: 1.9 km

Horizontal field of view: 90° (cylindrical projection)
Viewing distance: 522 mm





Tangy IV Wind Farm
Figure 13.3.6.2b - Cultural Heritage Viewpoint from Dun Fhinn, dun

- | | | | |
|---|---|---|-----------------------|
|  | Proposed Tangy IV
Wind Turbines (150m Tip) |  | Consented Wind Farm |
|  | Operational Wind Farm |  | Wind Farm Application |

Drawing No. - 117037-D-13.3.6.2a-b
Revision - 1.0.0
Date - 15.08.2018

OS reference: 165728 E 630645 N
Ground level: 15.1 m AOD
Direction of view: 212.01°
Nearest existing turbine: 2.4 km
Nearest proposed turbine: 1.9 km

Horizontal field of view: 90° (cylindrical projection)
Viewing distance: 522 mm

