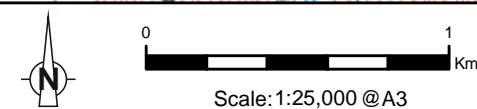


Grid Ref: 244964 810542 Distance to development: 10.8km AOD: 393.1m



From Fort Augustus, travel eastwards on the B862. Approximately 8.5km from Fort Augustus, around 2km beyond Loch Tarff, pull over into a layby on the left side of the road. The viewpoint is located between the fence and information sign, by this layby.

**FIGURE 8.39.1**  
**VIEWPOINT 5 - Suidhe Viewpoint, B862**

Drawing No. - 119009-D-8.39.1  
Revision - 1.0.0  
Date - 05/08/2021



**Tripod Photo**





Photomontage

FIGURE 8.39.2 - VP5: Suidhe Viewpoint, B862

OS reference: 244964 E 810542 N Nearest visible turbine: 10.8km Ground level: 393.1m AOD Direction of view: 331.8°  
Camera: Sony A7RIII ILCE-7RM3 Focal length: 50mm vertical (27°) x 28mm horizontal (65.5°) Camera height: 1.5m Date: 24/08/2021 Time: 14:08  
Drawing No. - 119009-D-8.39.2-3-1.0.0 Date - 03/08/2021

*The images contained on this page and the following are not representative of scale and distance from the actual viewpoint and shows the wind farm development in its wider landscape context only.*





Existing View

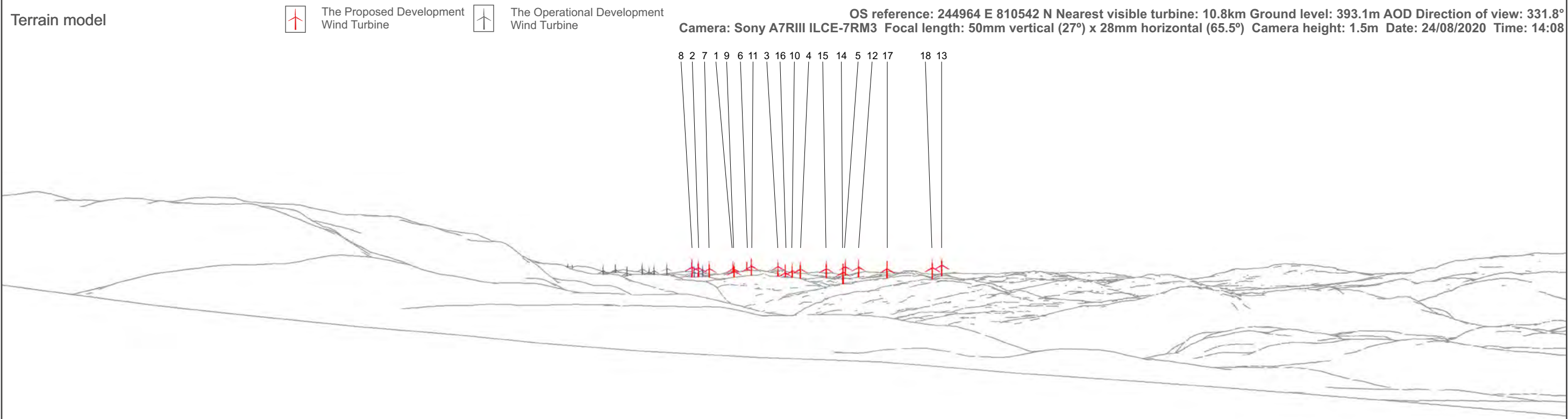


FIGURE 8.39.3 - VP5: Suidhe Viewpoint, B862





Photomontage

**FIGURE 8.39.4 - VP 5: Suidhe Viewpoint, B862**  
When viewed at a comfortable arms length (approx. 500mm), this printed image is representative of our detailed central vision, but is not representative of scale and distance.

OS reference: 244964 E 810542 N Nearest visible turbine: 10.8km Ground level: 393.1m AOD Direction of view: 331.8°  
Camera: Sony A7RIII ILCE-7RM3 Focal length: 50mm Camera height: 1.5m Date: 24/08/2020 Time: 14:08  
Drawing No. - 119009-D-8.39.4-1.0.0 Date - 03/08/2021





Photomontage

**FIGURE 8.39.5 - VP 5: Suidhe Viewpoint, B862**

This image should be viewed at a comfortable arms length (approx 500mm)

OS reference: 244964 E 810542 N Nearest visible turbine: 10.8km Ground level: 393.1m AOD Direction of view: 331.8°  
Camera: Sony A7RIII ILCE-7RM3 Focal length: 75mm Camera height: 1.5m Date: 24/08/2020 Time: 14:08

Drawing No. - 119009-D-8.39.5-1.0.0 Date - 03/08/2021





**FIGURE 8.39.6 - VP 5: Suidhe Viewpoint, B862 - Monochrome Analysis**

This image should be viewed at a comfortable arms length (approx 500mm)

OS reference: 244964 E 810542 N Nearest visible turbine: 10.8km Ground level: 393.1m AOD Direction of view: 331.8°  
 Camera: Sony A7RIII ILCE-7RM3 Focal length: 75mm Camera height: 1.5m Date: 24/08/2020 Time: 14:08

Drawing No. - 119009-D-8.39.6-1.0.0 Date - 03/08/2021