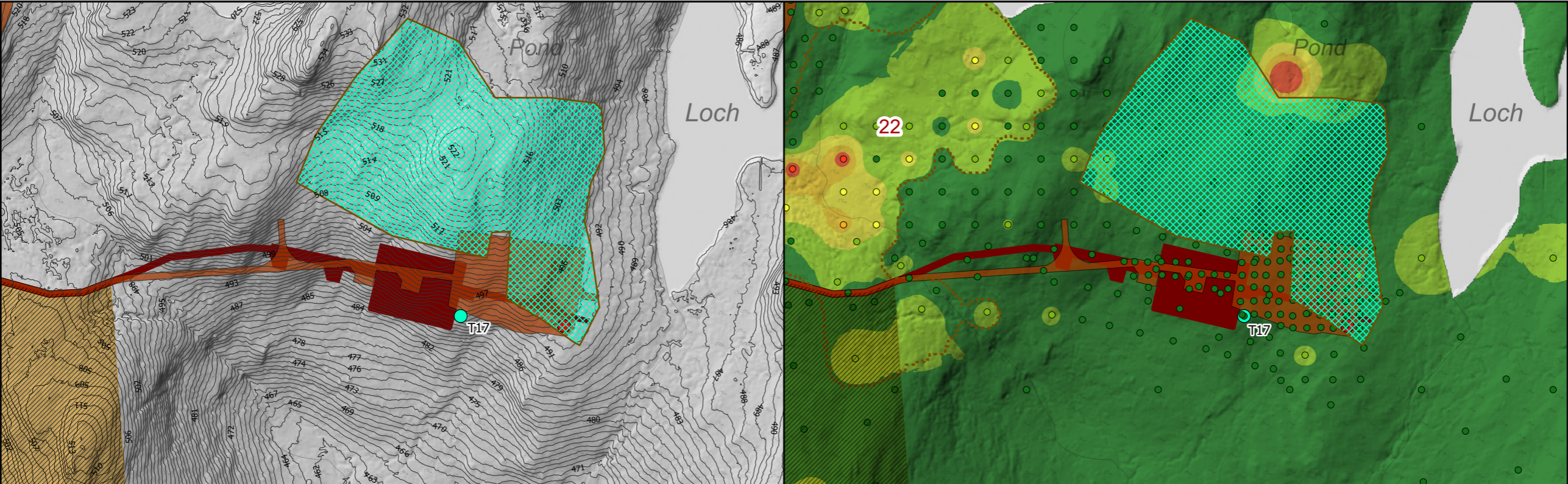
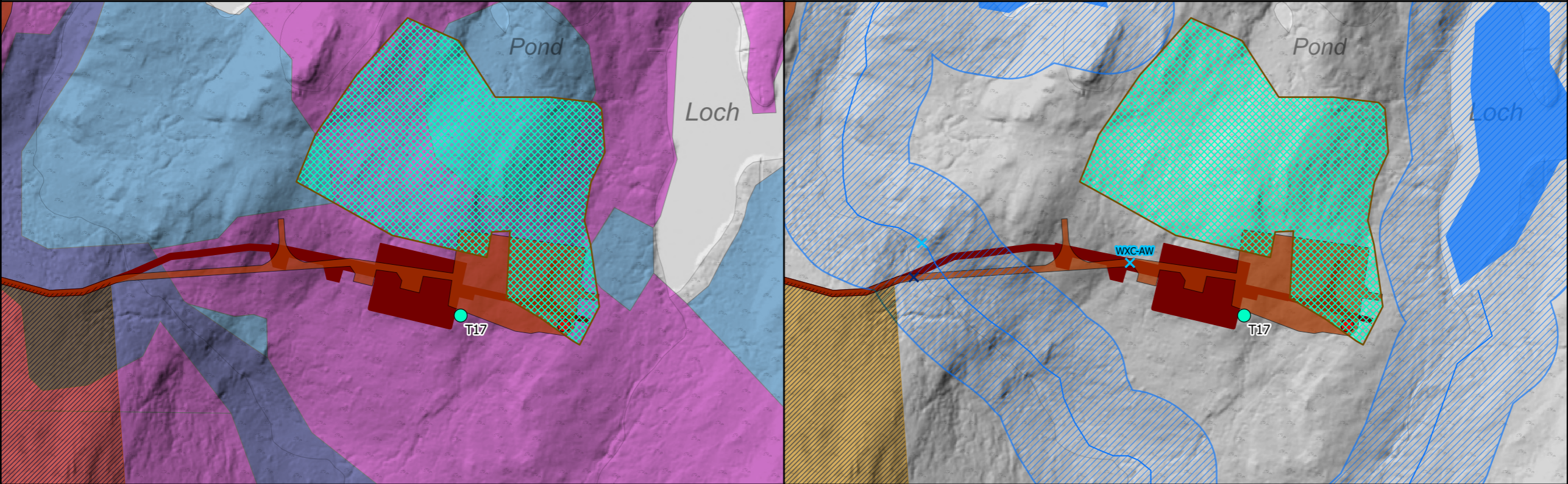


T17: Reason for Moving: Due to the relocation of turbines west of T17 and the need to maintain rotor spacing, this turbine has been sited further east.



Engineering: The track has been realigned to provide a flatter approach to the hardstand for delivery and construction vehicles, resulting in fewer cut/fill requirements during construction. The cut/fill balance will be sufficient to remove the need for a borrow pit at this location

Geology Impacts: The proposed turbine location places the hardstand where the consented turning head is located. The turning head has been relocated west of the hardstand to allow delivery vehicles to exit the site. Both the consented and proposed infrastructure are within the consented 50m micro-siting buffer.



Ecology Impacts: As with the current consented infrastructure, the new layout is entirely within Wet Heath (M15c).

Hydrology Impacts: The proposed location is outside the 50m water buffers. There is a watercourse crossing in the auxiliary crane pad area west of the hardstand. If the consented turbine location were maintained, this watercourse crossing would pass directly beneath the main hardstanding area requiring a long culvert or water course diversion.

Legend

- Site Boundary
- Consented Turbine Location
- Proposed Varied Turbine Location
- Proposed Varied Development Layout
- Consented Development Layout
- No Change to Consented Development
- Consented Borrow Pit Excluded From Proposed Varied Development

Engineering

1m Contour

Geology

Peat Depth (m)

- 0 - 0.5
- 0.5 - 1
- 1 - 1.5
- 1.5 - 2
- > 2
- 0 - 0.5
- 0.5 - 1
- 1 - 1.5
- 1.5 - 2
- > 2
- No Change to Consented Development
- Potential Peatland Restoration Areas

Ecology

NVC

- H9e
- M15c
- M17/M17a/M18a/M19a

Hydrology

- Consented Water Crossing
- Revised Water Crossings
- 50m Water Buffer (Based on OS 50k)
- Watercourses (Based on OS 50k)
- Waterbodies (Based on OS 50k)

Scale 1:3,500 @ A3

0 80 m



Figure 2.10
Infrastructure Design Review
- Turbine 17