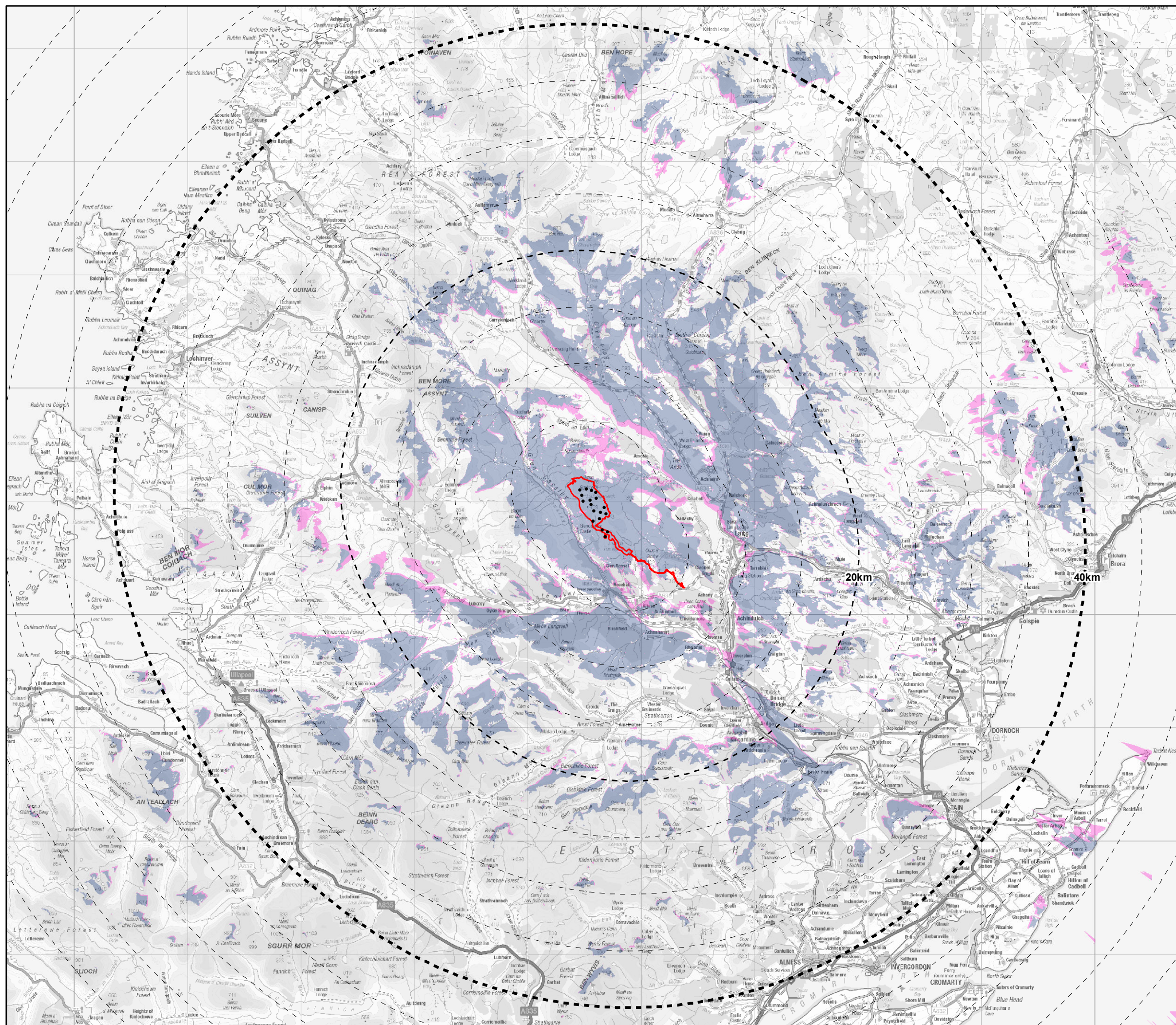


Key

- Red Line Boundary
- Proposed Varied Development Turbine
- 40km Wider Study Area
- 20km Detailed Study Area
- 5 km Distance Radii

Zone of Theoretical Visibility (ZTV):

- Consented Development ZTV (149.9m to Tip)
- Additional Theoretical Visibility of Proposed Varied Development (200m to Tip)



Scale 1:325,000@ A3

0 5 10 15 Km

N

Figure 5.3
Comparative ZTV of the Consented Development and Proposed Varied Development

Achany Extension Wind Farm
Section 36C: EIA Report