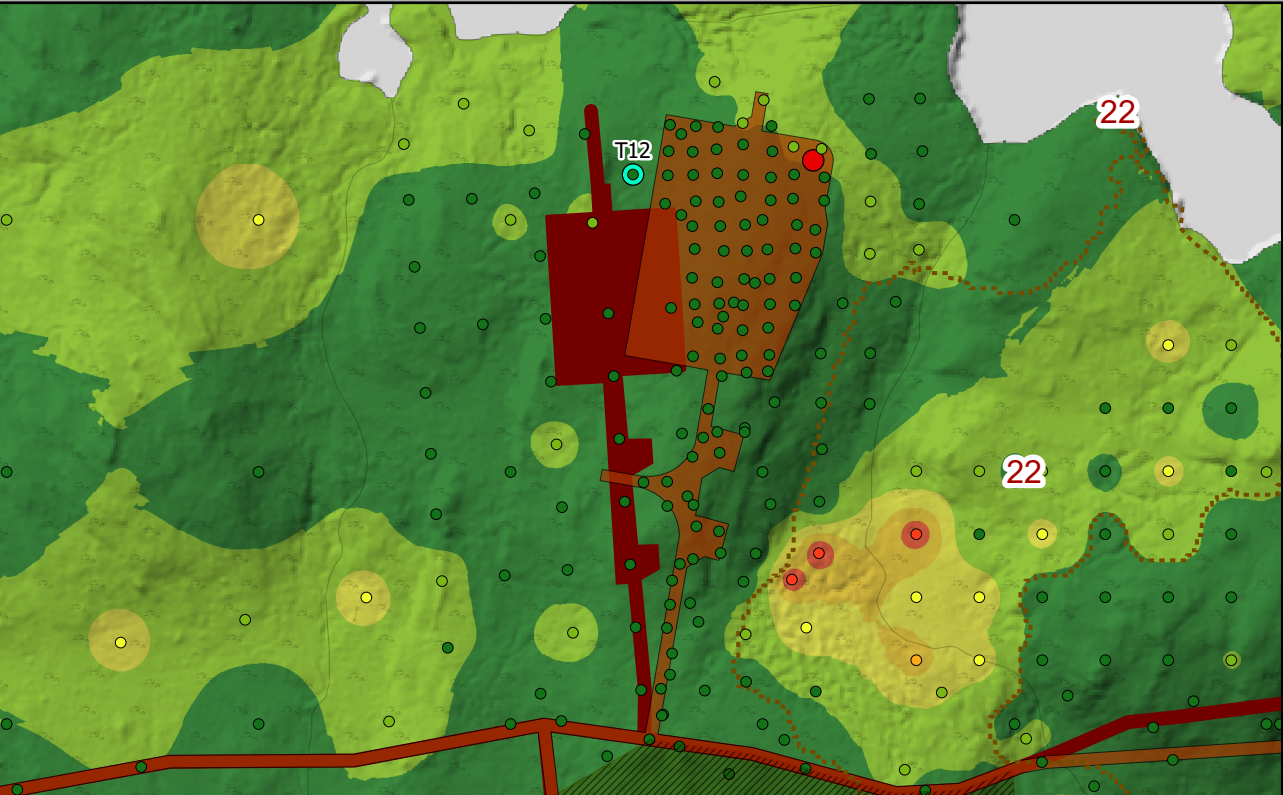


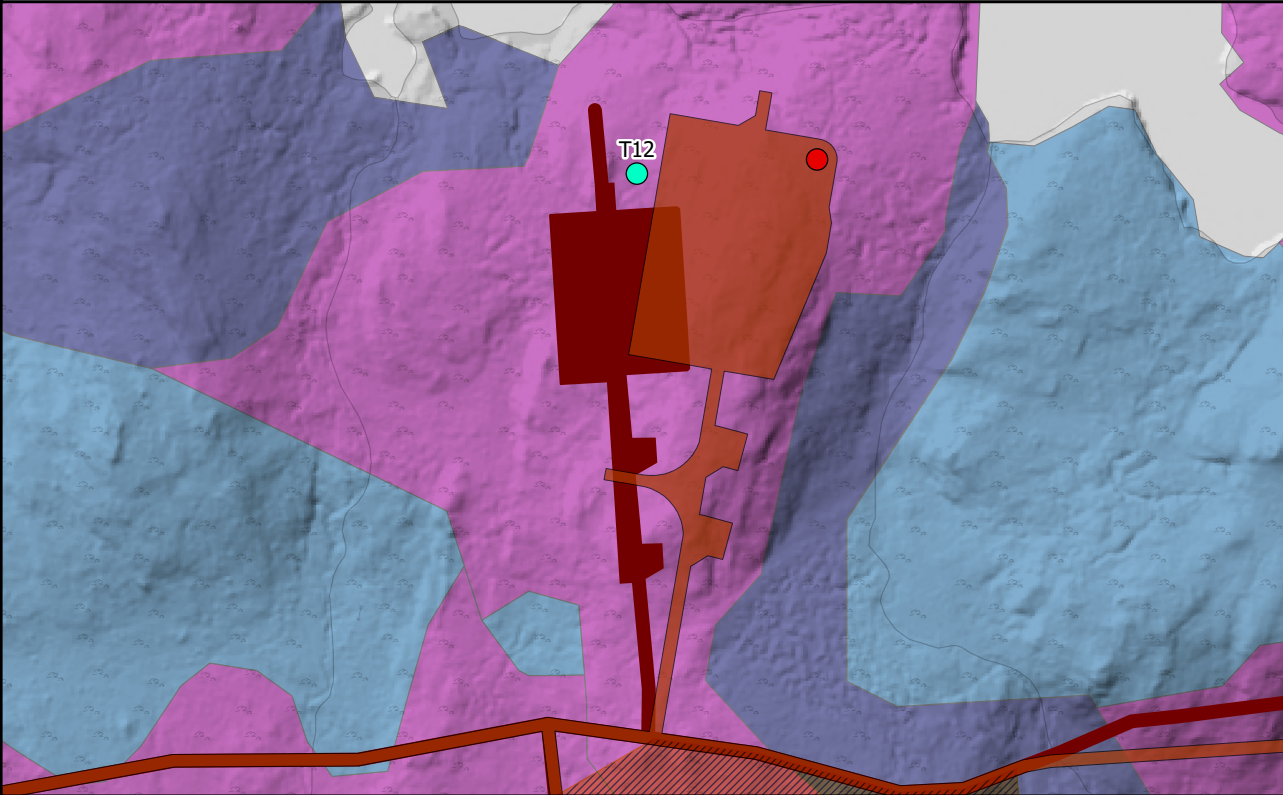
T12: Reason for Moving: The move is necessary to increase turbine spacing to more than three times the rotor diameter from its closest neighbouring turbine. This adjustment was needed because T04 had to be moved east due to safety concerns regarding the toppling distance to the substation platform. Increasing the spacing reduces the impact of wake-related losses, which occur when turbines are too close to each other.



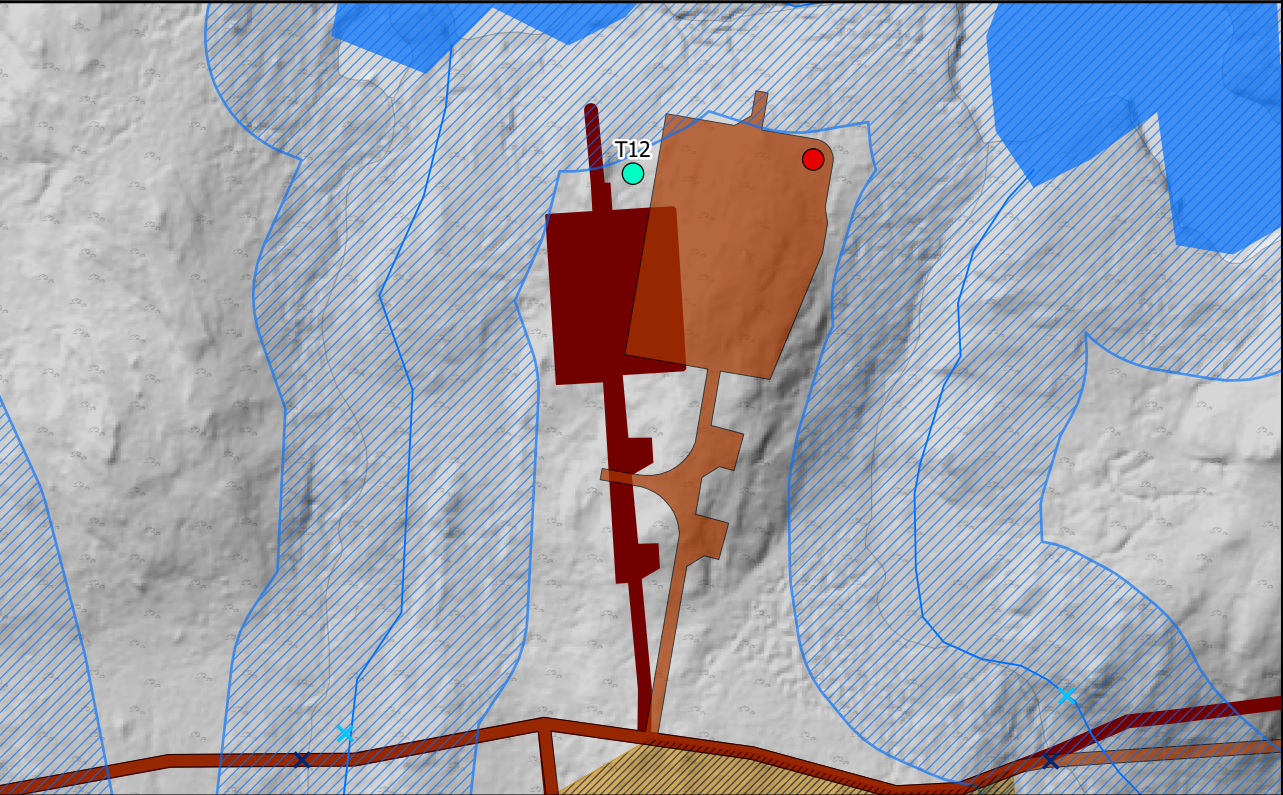
Engineering: Position of hardstand relative to main spur was slightly moved north to maximise available track length for achieving suitable track gradient for component deliveries.



Geology Impacts: Both consented and proposed infrastructure is located in areas of shallow peat. A turning head has been introduced to allow for delivery vehicles to manoeuvre and leave the hardstand safely.



Ecology Impacts: As with the current consented infrastructure, the new layout is entirely within Wet Heath (M15c).



Hydrology Impacts: The proposed location is outside the 50m water buffers. If the consented turbine location was to be maintained with the required hardstanding, the 50m water buffer to the west of the turbine would be impacted. Micrositing options will be reviewed during construction to avoid impact on 50m water buffer in North.

Legend

- Site Boundary
- Consented Turbine Location
- Proposed Varied Turbine Location
- Proposed Varied Development Layout
- Consented Development Layout
- No Change to Consented Development
- Consented Borrow Pit Excluded From Proposed Varied Development

Engineering

- 1m Contour

Geology

Peat Depth (m)

- 0 - 0.5
- 0.5 - 1
- 1 - 1.5
- 1.5 - 2
- > 2

0 - 0.5

0.5 - 1

1 - 1.5

1.5 - 2

> 2

Potential Peatland Restoration Areas

Ecology

NVC

- H9e
- M15c
- M17/M17a/M18a/M19a

Hydrology

- Consented Water Crossing
- Revised Water Crossings
- Watercourses (Based on OS 50k)
- Waterbodies (Based on OS 50k)
- 50m Water Buffer (Based on OS 50k)

Scale 1:3,000 @ A3

0 80 m

N

Figure 2.11
Infrastructure Design Review
- Turbine 12