

remaining wet hollows and bog pools with white dead sphagnum moss present as large hummocks or carpets where significant desiccation of the habitat is evident.

Damage of blanket bog by deer from trampling and overgrazing was evident throughout the Survey Area and Peatland Restoration Areas. Deer were observed throughout the survey area during the Site visit with small areas of bare peat at deer paths and larger areas where surface vegetation has been damaged and fragmented due to sustained trampling. It is evident that pressures from high numbers of deer have had a detrimental impact on blanket bog and heath habitats within the Survey Area and the success of any restoration or enhancement works will be dependent on the successful and sustained control of deer numbers as suggested within the deer management plan.

Caledonian Woodland Areas

Caledonian Woodland Areas are comprised of a mosaic of habitats including blanket bog in lower areas and hollows, wet heath on steeper slopes and dry heath at rocky outcrops (See Appendix C, Photo 22).

Blanket bog habitat covers small areas between the steeper slopes and along the flatter ground surrounding the riparian corridor. These areas are too small to map separately and transition to the dominant wet heath habitat. The blanket bog areas are in variable condition but are mostly in poor or moderate condition with the species composition and height of the water table matching the general descriptions for the Peatland Restoration Areas above.

Wet heath habitat dominates the Caledonian Woodland Areas with a mixture of good and moderate condition habitat recorded. Ling heather, cross leaved heath and deer grass at least frequent throughout with bog myrtle, purple moor grass, bog asphodel and tormentil present at variable densities depending on the steepness of the slope and natural drainage. Peat forming sphagnum and cotton grass species are present in the lower blanket bog transitional areas.

Rocky outcrops are present throughout with some encircled by small areas of dry heath with bell heather and crowberry present.

Grazing pressures are variable, as described within the Peatland Restoration Areas with dwarf shrubs showing signs of grazing and deer paths throughout.

Overall, the area is mostly sheltered from strong prevailing winds with prostrate dwarf shrubs generally absent except on the most exposed rocky outcrops to the east. Dwarf birch and juniper are rare but present in some areas and along the access track at very low densities and those identified were heavily grazed.

Montane Scrub Planting Areas

Montane Scrub Planting Area habitats are extremely variable overall.

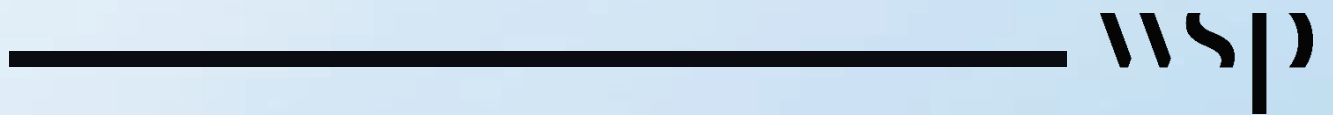
Montane Scrub Area 1 consists of dry upland heath in good condition meeting the description of Annex 1 habitat H4030 (See Appendix C Photograph 23). Bell heather dominates this habitat with ling heather, blaeberry, tormentil, purple moor grass and deer grass recorded throughout. As above, grazing pressure is high however all age classes of heather were observed, and so overall condition of the habitat remains good.

Montane Scrub Area 2 and 3 consists of mountain heath and willow scrub in moderate condition (See Appendix C Photograph 24). Species composition is generally the same as Montane Scrub Planting Area 1 and the Caledonian Woodland Planting habitats with the addition of crowberry, stunted trees on outcrops and rare birch saplings throughout. This habitat covers the most exposed areas subject to prevailing winds with dwarf shrubs prostrate and the slopes are generally free draining.

Montane Scrub Area 4 consists of upland heath in good condition (See Appendix C Photograph 25). This area generally matches the habitat description of Caledonian Woodland Planting areas above with the main difference being the increased exposure to prevailing winds and larger numbers of rocky outcrops making the area less suitable for Caledonian woodland planting and more suited to montane scrub planting. The dwarf shrubs present are not prostrate but dwarf juniper is rare throughout and present along the disturbed areas adjacent to the access tracks.

Appendix C

Site Photographs



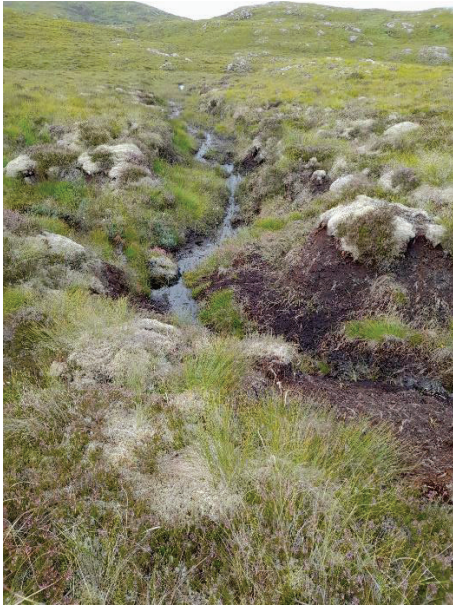


Photo 1: Compartment 1a: Channel 1A



Photo 3: Compartment 5a: Gully 5A



Photo 2: Compartment 5a: Natural Channel that cuts through compartment



Photo 4: Compartment 5a: Eastern tip of Bare Peat Area 5A



Photo 5: Compartment 7: Channel 7.



Photo 7: Compartment 7: Peat Hag 7B



Figure 6: Compartment 7: Peat Hag 7A



Figure 8: Compartment 15: Channel 15A



Photo 9: Compartment 15: Channel 15B

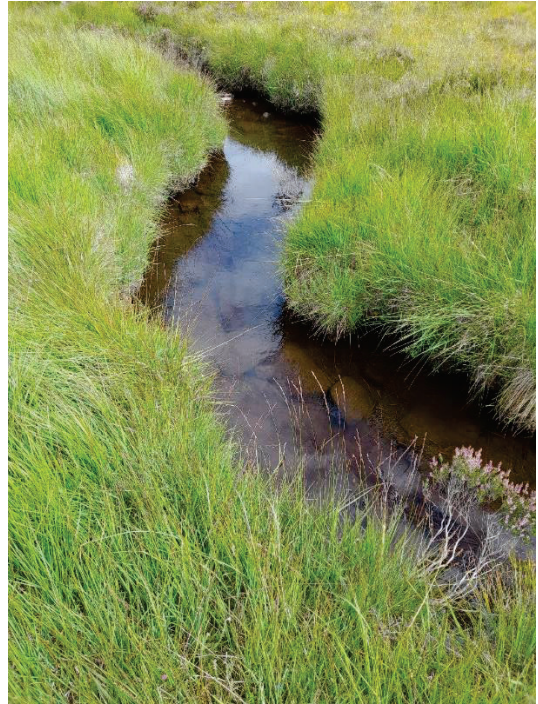


Photo 11: Compartment 10: Channel 10A



Photo 10: Compartment 15: Track Bare Peat Area 15



Photo 12: Compartment 10: of Channel 10B



Photo 13: Compartment 10: Channel 10C

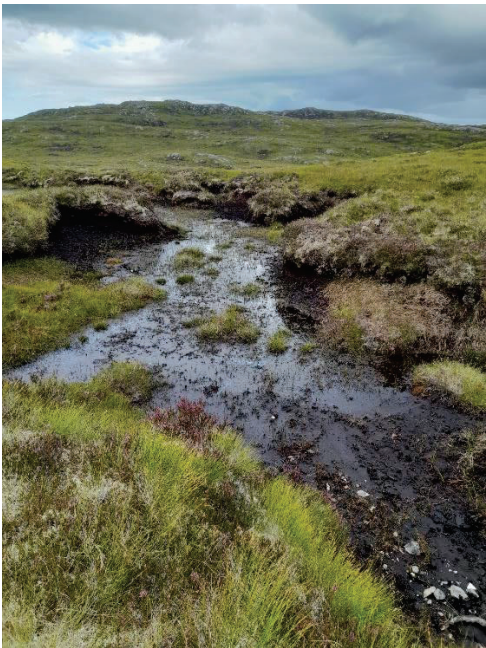


Photo 14: Compartment 11: Gully 11



Photo 15: Compartment 11: Bare Peat Area 11



Photo 16: Compartment 12: Gully 12

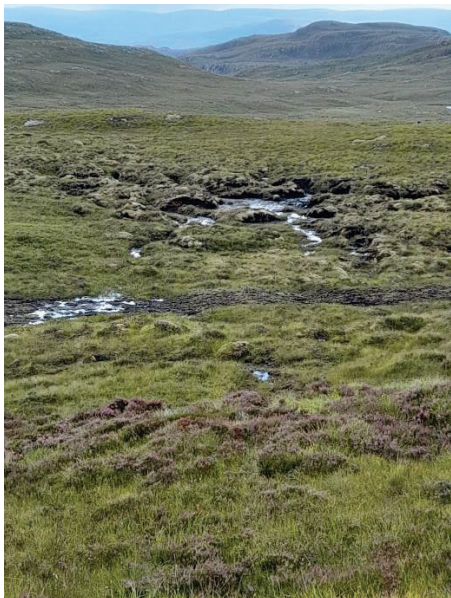


Photo 17: Compartment 12: Bare peat area and track damage

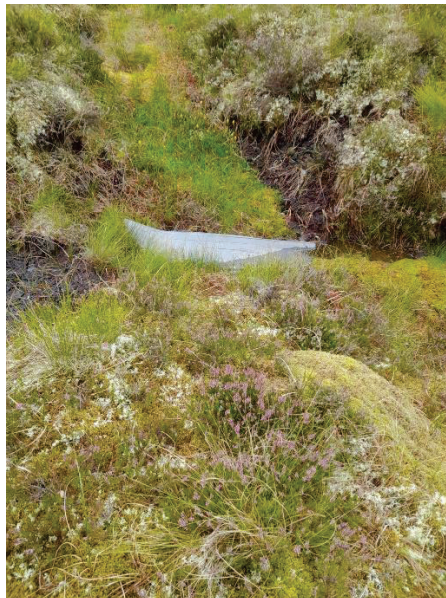


Photo 19: Compartment 17: Channel 17A (eastern dammed end)



Photo 18: Compartment 17: Channel 17A



Photo 20: Compartment 22: Peat Hag 22



Photo 21: Compartment 22: Gully 22

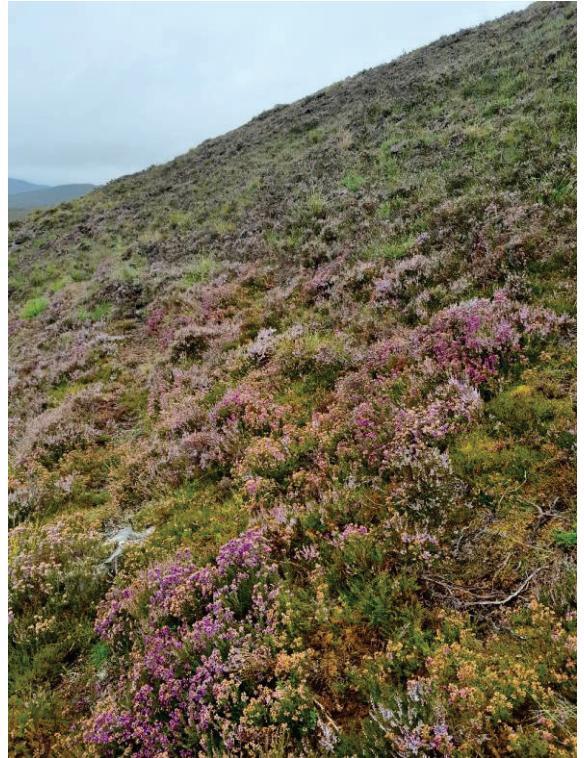


Photo 23: Montane Woodland Planting Area 1



Photo 22: Caledonian Woodland Planting Area

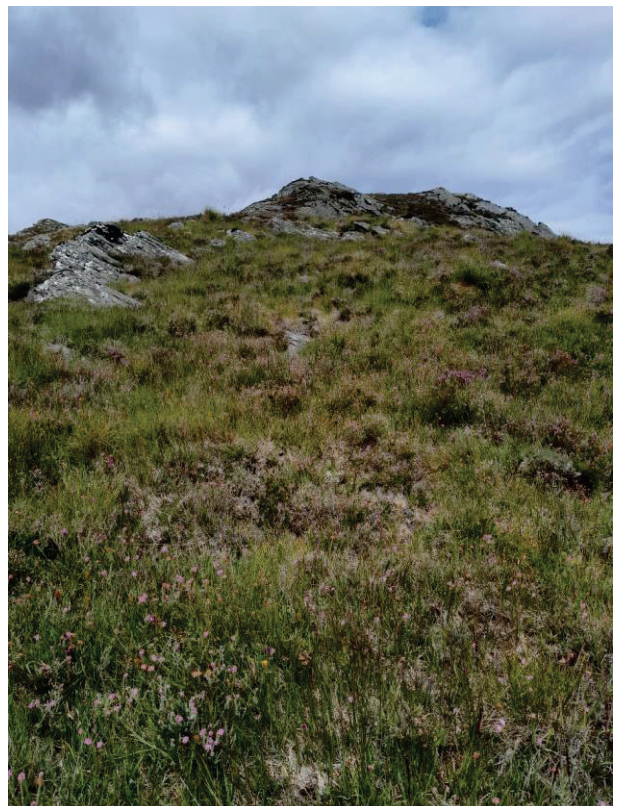


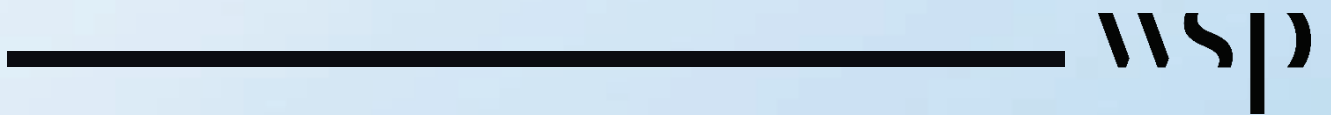
Photo 24: Montane Woodland Planting Area 2 & 3



Photo 25: Montane Woodland Planting Area 4

Appendix D

Diver raft design



Legend

 Artificial Diver Raft Option Areas



Client:

SSER

Project:

Bhilaraidh Extension
Habitat Management Plan

Title:

Figure 7:
Artificial Diver Raft Potential
Locations

Drawing No:

Figure 7

Date:

17/11/2023

Scale:

8,500 @ A3

Drawn:

Check:

Approved:

SMS

IG

SK





110 Queen Street
Glasgow
G1 3BX

wsp.com

WSP UK Limited makes no warranties or guarantees, actual or implied, in relation to this report, or the ultimate commercial, technical, economic, or financial effect on the project to which it relates, and bears no responsibility or liability related to its use other than as set out in the contract under which it was supplied.