

Key

- Red Line Boundary
- Proposed Varied Development Turbine
- 20km Detailed Study Area
- 5 km Distance Radii
- LCT Scoped In Assessment
- LCT Scoped Out of Assessment
- Zone of Theoretical Visibility (ZTV)

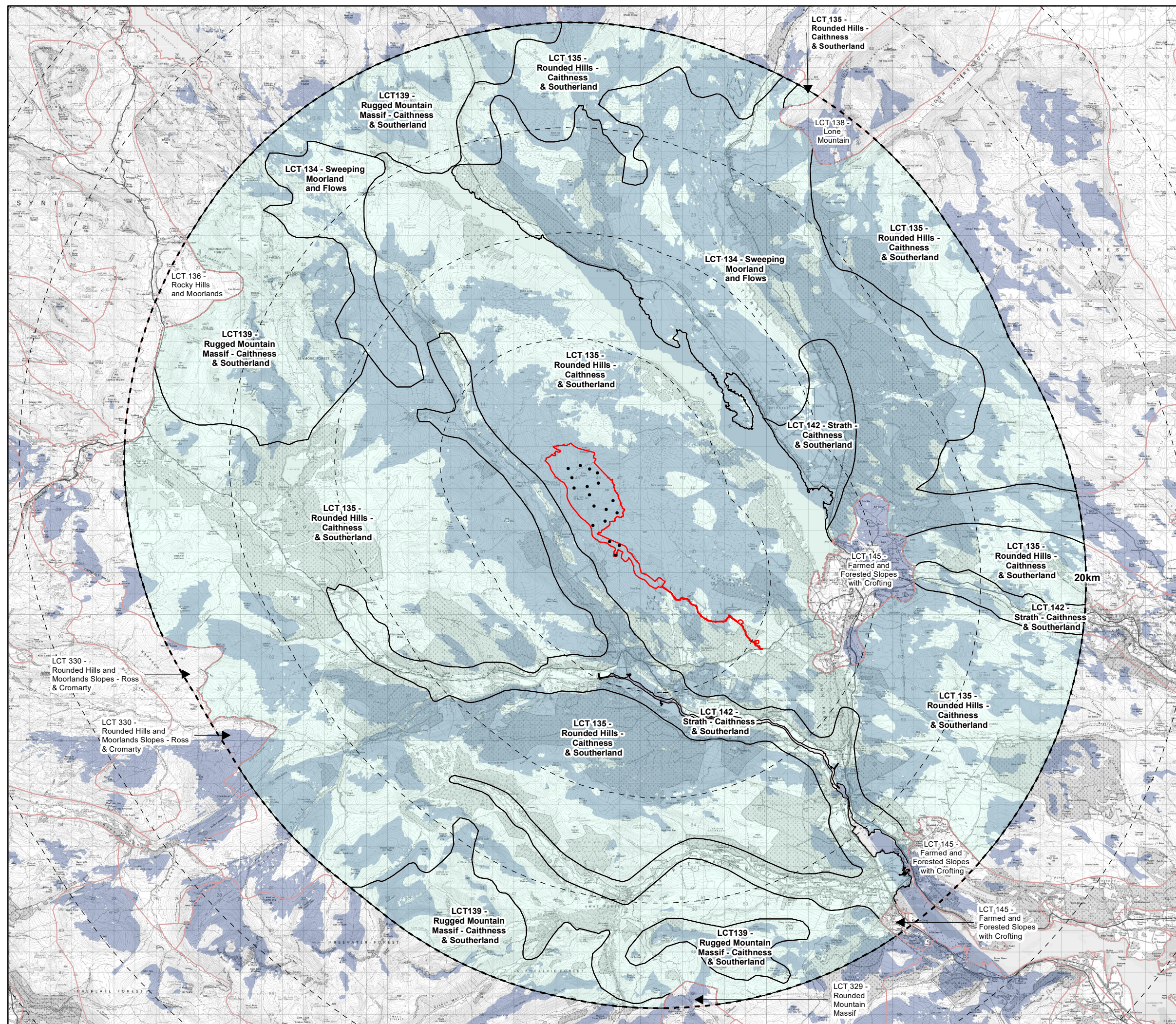


Figure 5.5
Landscape Character Types
within Detailed Study Area

Achany Extension Wind Farm
Section 36C: EIA Report