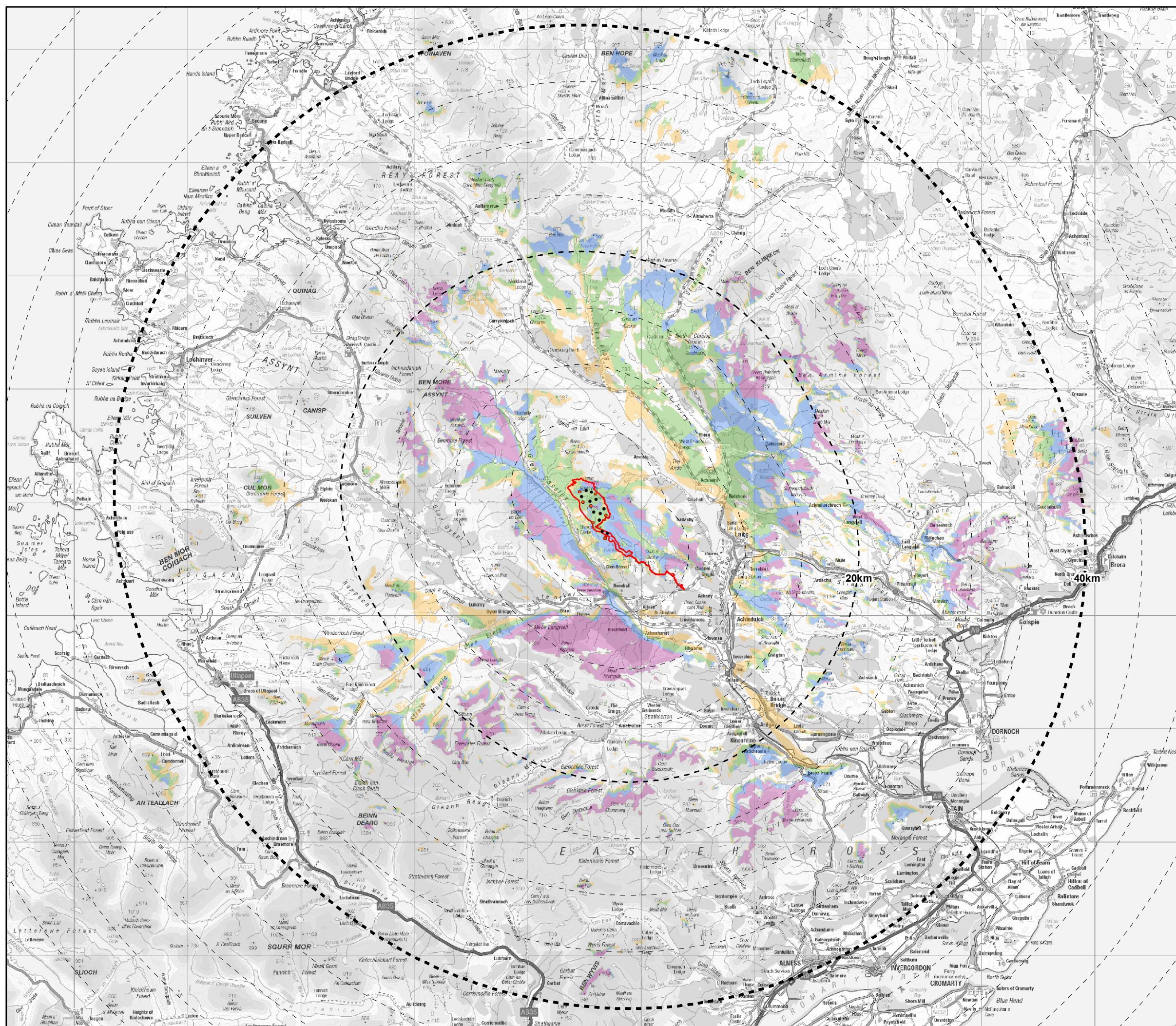


### Key

- Red Line Boundary
- Proposed Varied Development Turbine
- Proposed Turbine to be Fitted with Visible Aviation Lighting
- 40km Wider Study Area
- 20km Detailed Study Area
- 5 km Distance Radii

### Hub Lighting Zone of Theoretical Visibility (ZTV): Number of Turbine Hubs Theoretically Visible

- 0 - 2
- 2 - 4
- 4 - 6
- 6 - 7



Scale 1:325,000@ A3

0 5 10 15 Km

Figure A5.11.1a  
Visible Aviation Lighting:  
Hub Height ZTV A3

Achany Extension Wind Farm  
Section 36C: EIA Report